



Cholmley Gardens, NW6

£1,200,000

This impressive lateral four bedroom second floor apartment is located within one of West Hampstead's popular mansion blocks. Cholmley Gardens is an endeared development with large private balcony and secure communal grounds.

Located on Fortune Green Road side of the development with access to all the facilities of West End Lane including the many restaurants, bars, supermarkets, and West Hampstead's Thameslink, London Overground and Jubilee Line

Features

- Four Bedrooms
- Private Balcony
- Double Glazing
- Communal Gardens
- Tennis Courts
- Share Of Freehold



Cholmley Gardens, NW6

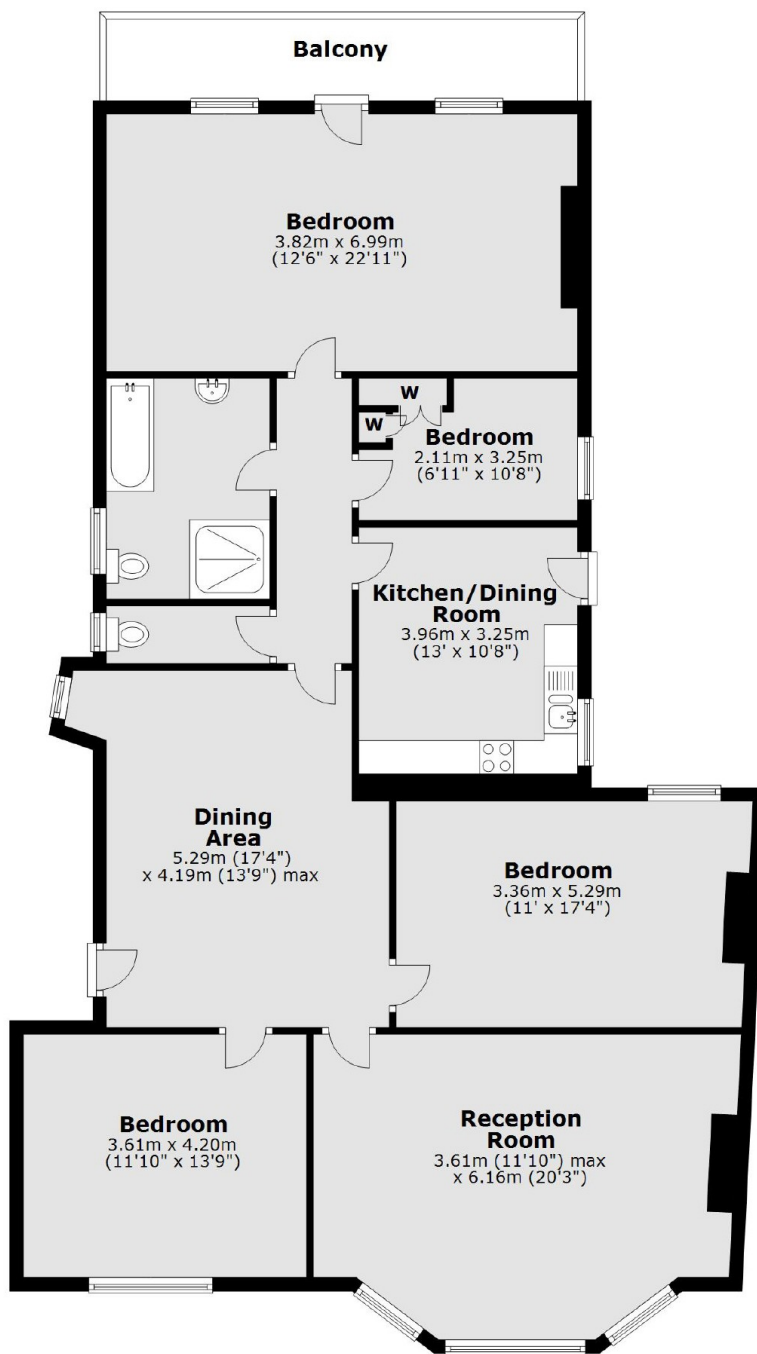
This is considered one of West Hampstead's sought after mansion apartments with unique features throughout. This flat is located on the second floor and offers larger than average living accommodation. An abundance of light fills this grand home with communal heating and hot water which is included in the service charge.

The family bathroom is in excellent condition and includes a fully tiled walk-in shower. All appliances and light fittings will be included in the sale.

The balcony at the rear of the property overlooks the communal gardens and tennis court with a stunning sunset view. The block features tennis courts, a children's play area, BBQ area and lawned gardens. The property further benefits from no onward chain and is perfect for a family or downsizing.



Cholmley Gardens, London, NW6



Second Floor 2

Total area: approx. 145.9 sq. metres (1570.6 sq. feet)