



## Maygrove Road, NW6

£550,000

This two bedroom flat is located on the top floor of this converted Victorian building and has a private balcony. The property has a share of freehold and scope to build a roof terrace subject to relevant permission.

West Hampstead stations (Thameslink, Jubilee line and Overground lines) are a short walk away. This property is conveniently located for the multiple shops, restaurants and amenities of both West Hampstead and Kilburn.

### Features

- Two Bedrooms
- Top Floor
- Victorian Conversion
- Balcony
- Separate Kitchen
- Scope for Terrace STPP



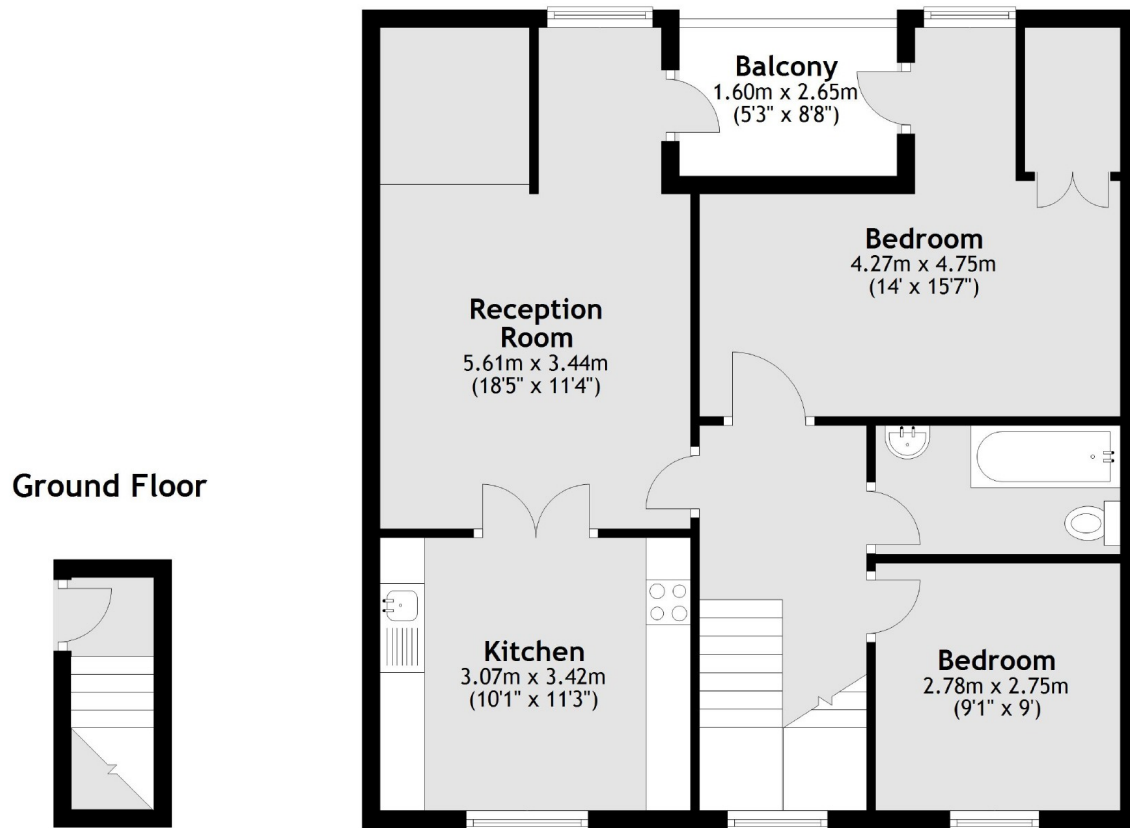
**Maygrove Road, NW6**





# Maygrove Road, London, NW6

## First Floor



Main area: Approx. 70.3 sq. metres (756.5 sq. feet)  
Plus balconies, approx. 4.7 sq. metres (50.4 sq. feet)