



Cavendish Road, NW6

£700,000

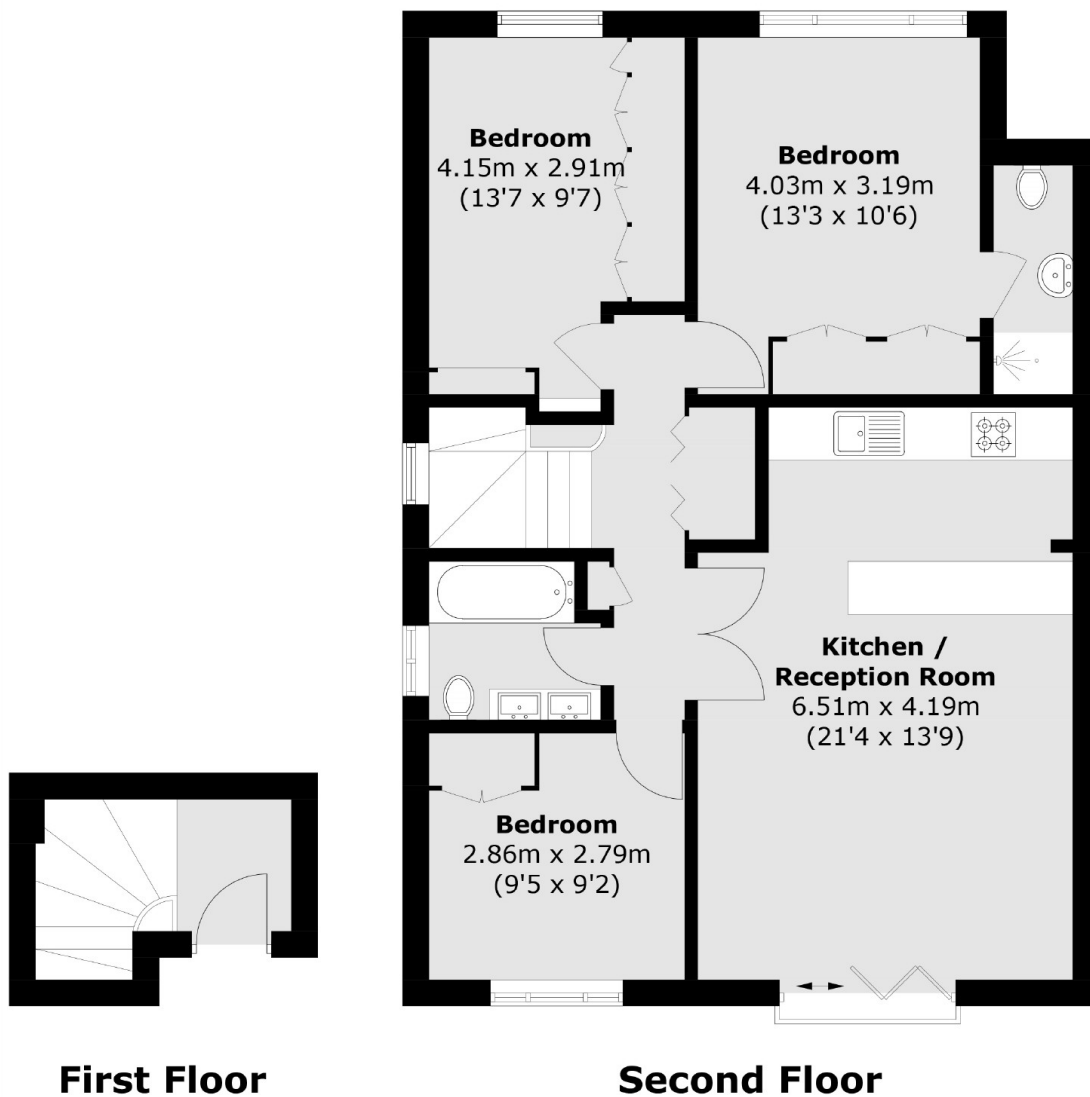
An exceptional three bedroom apartment on the top floor of this Victorian house. This property has an open plan kitchen/reception room with bi-folding doors and integrated appliances, two bathrooms and a Juliette balcony.

Cavendish Road is conveniently located with good transport links to including Kilburn underground station (Jubilee Line) which is within 0.1 miles as well as many bus connections, shops bars and cafes.

Features

- Three Bedrooms
- Two Bathrooms
- Open Plan Kitchen
- Share Of Freehold
- Wooden Floors
- Modern Kitchen

Cavendish Road, London, NW6



Total area (approx.): 82.0 sq. m (882.6 sq. ft)