



## Finchley Road, NW2

£399,950

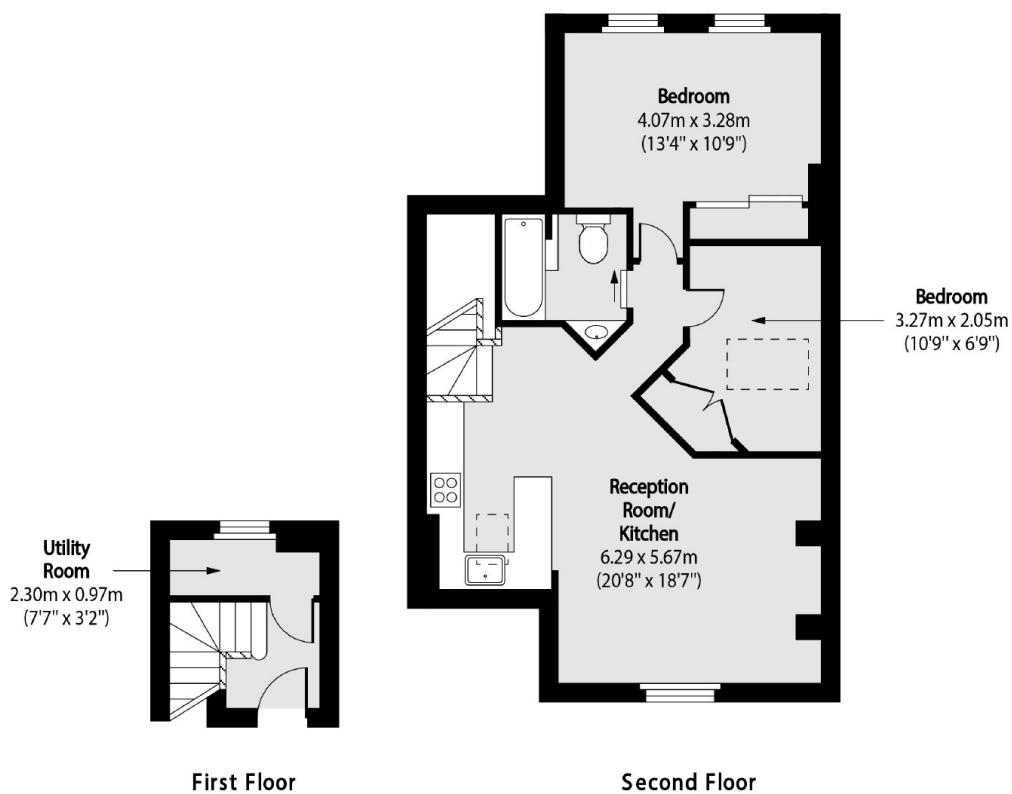
This two bedroom apartment located on the second floor of this Victorian conversion benefits from communal garden access, exposed wooden beams and open plan living.

Close to Golders Green tube, Cricklewood Thameslink and a number of bus routes on the doorstep. There is also the open spaces of Hampstead Heath and Golders Hill Park close by.

### Features

- Two Bedrooms
- One Bathroom
- Open-plan
- Communal Gardens
- Second Floor
- Share of Freehold

# Finchley Road, London, NW2



Total area (approx): 62.02 sq m (668 sq. ft)