



The Vale, NW11

£899,950

This four bedroom semi-detached house would make the ideal family home. This property has off-street parking, a mature south facing garden and two reception rooms.

The Vale is conveniently located close to Brent Cross Shopping Centre, and accessible to Brent Cross and Golders Green underground Stations.

Features

- Four Bedrooms
- Off-Street Parking
- South Facing Garden
- Two Bathrooms
- Semi-Detached
- Transport Links



The Vale, NW11

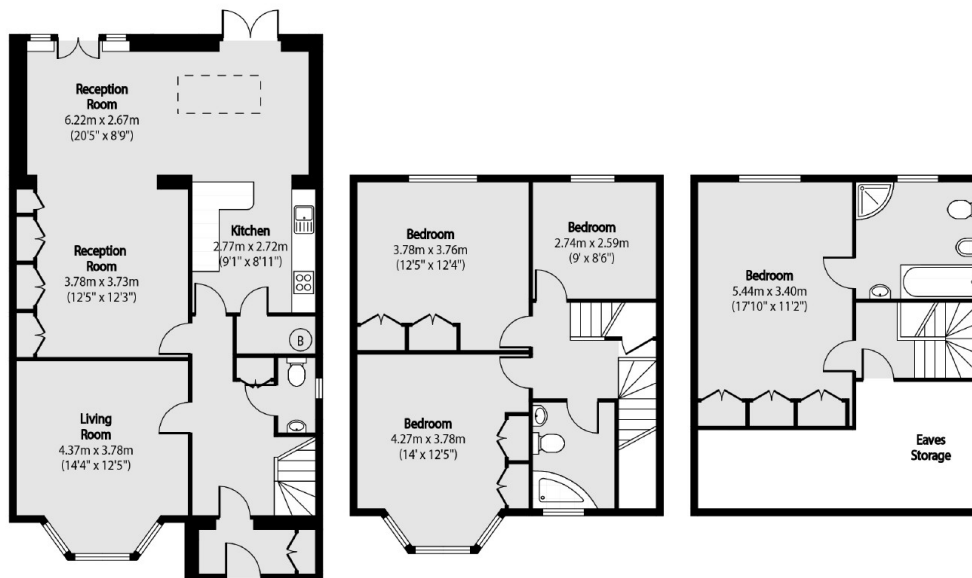
On the ground floor there is a good sized reception room at the front of the house which has a big bay window allowing in an abundance of natural light.

To the rear of the property is the kitchen and another reception room which has plenty of storage and leads directly on to a mature south facing garden.

The first floor has two good size double bedrooms, a single bedroom and a family bathroom, the second floor has the principal bedroom and a large en-suite. There are stunning views from this room and lots of eaves storage.



The Vale, London, NW11



Ground Floor

First Floor

Second Floor

Total area (approx): 153.66 sq m (1654 sq. ft)