



Woodchurch Road, NW6

£5,500,000

Dexters



Woodchurch Road, NW6

A rare opportunity to acquire a spectacular double fronted house located on a quiet road in the heart of South Hampstead measuring approximately over 6,000 sq.ft with a garden.

This house is currently arranged as three apartments, a split level ground and lower ground four bedrooms with two reception rooms and three bathrooms. From here you have direct access to an impressive south facing secluded garden.

There are two apartments over the first and second floors, one with two bedrooms and the other with three bedrooms. The property has the potential to be converted back into one residence (subject to planning permission) and will be an ideal family home.

This property also benefits from a front drive and a separate garage which also has potential to be converted (subject to planning permission).

Woodchurch Road is a quiet residential street in South Hampstead which provides easy access to Finchley Road amenities and transport links (Metropolitan Line and Finchley & Frognal Overground) as well as West Hampstead (Jubilee Line, London Overground and Thameslink).

Features

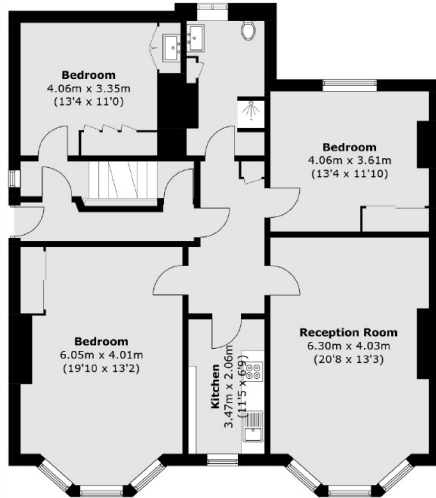
- Nine Bedrooms
- Five Bathrooms
- Garage
- Off Street Parking
- South Facing Garden
- No Onward Chain



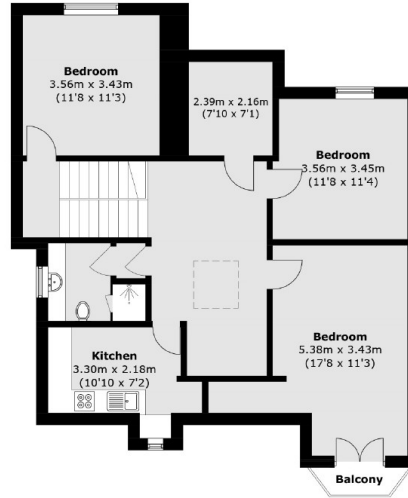




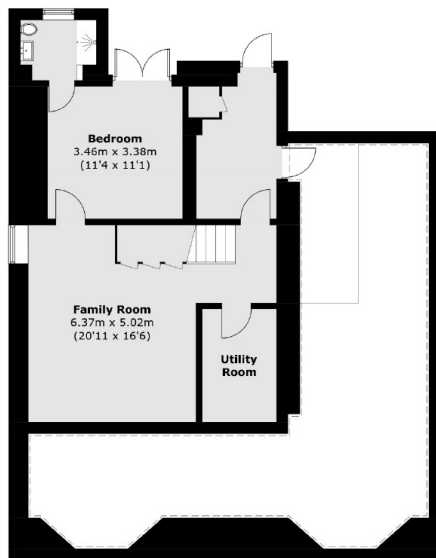
Woodchurch Road, London, NW6



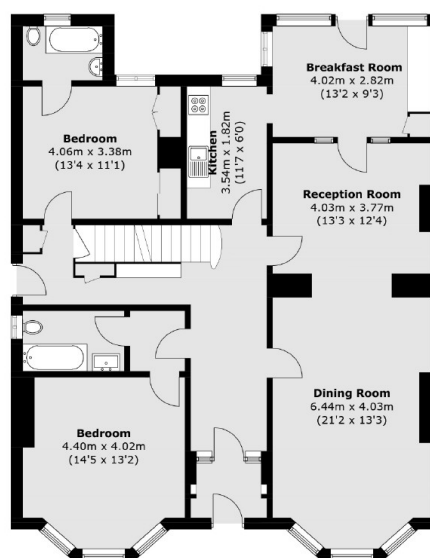
First Floor



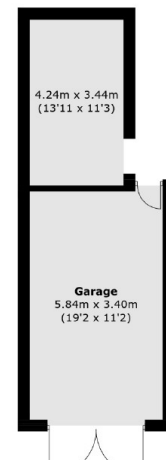
Second Floor



Lower Ground Floor



Ground Floor



(Not Shown In Actual Location / Orientation)

Total area (approx.): 390.0 sq. m (4,198.0 sq. ft)
 Garage: 30.9 sq. m (332.6 sq. ft)
 Balcony: 1.4 sq. m (15.1 sq. ft)