



Dyne Road, NW6

£700,000

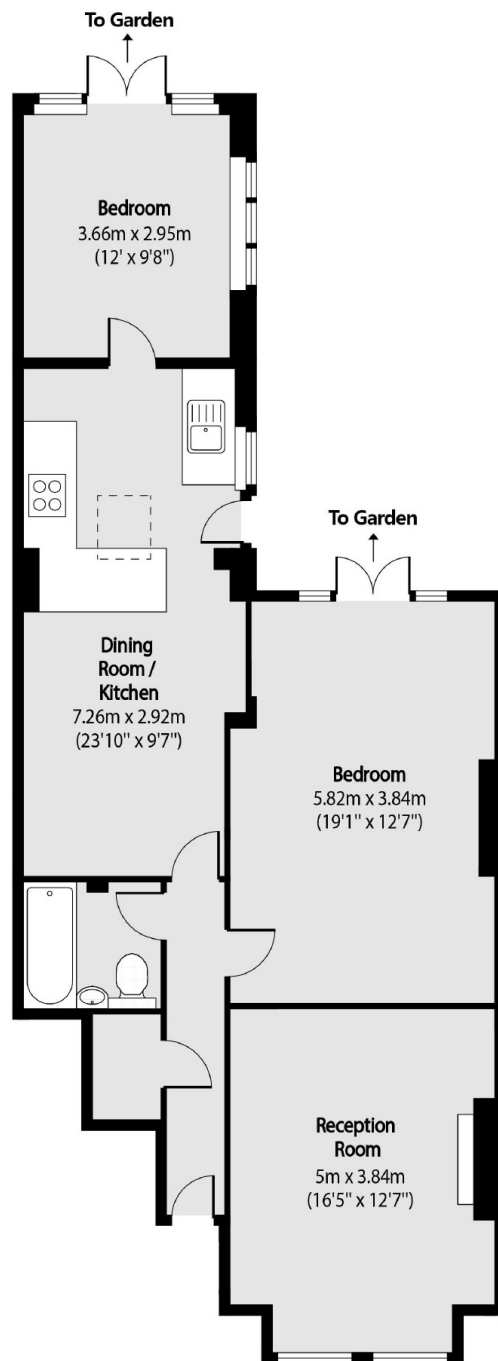
This two bedroom garden flat is located on the ground floor of this Victorian converted building and has off street parking on the drive. The property has a share of the freehold and will be sold with no onward chain.

Dyne Road is ideally located close to the numerous shops, cafes and restaurants of Queens Park's Salusbury Road. Excellent transport links include both Brondesbury Park and Brondesbury Overground stations and Kilburn underground.

Features

- Two Double Bedrooms
- Private Garden
- Off Street Parking
- Share Of Freehold
- High Ceilings
- No Onward Chain

Dyne Road, London, NW6



Total area (approx): 83.79 sq m (902 sq. ft)

Dexters

West Hampstead Sales
349 West End Lane
London
NW6 1LT
Sales
020 7644 9300

Energy Rating: D. We aim to make our particulars both accurate and reliable. However they are not guaranteed; nor do they form part of an offer or contract. If you require clarification on any points then please contact us, especially if you're traveling some distance to view. Please note that appliances and heating systems have not been tested and therefore no warranties can be given as to their good working order.

 **RICS** | Regulated
Estate Agent
and Letting Agent

[dexters.co.uk](https://www.dexters.co.uk)