



Hemstal Road, NW6

£600,000

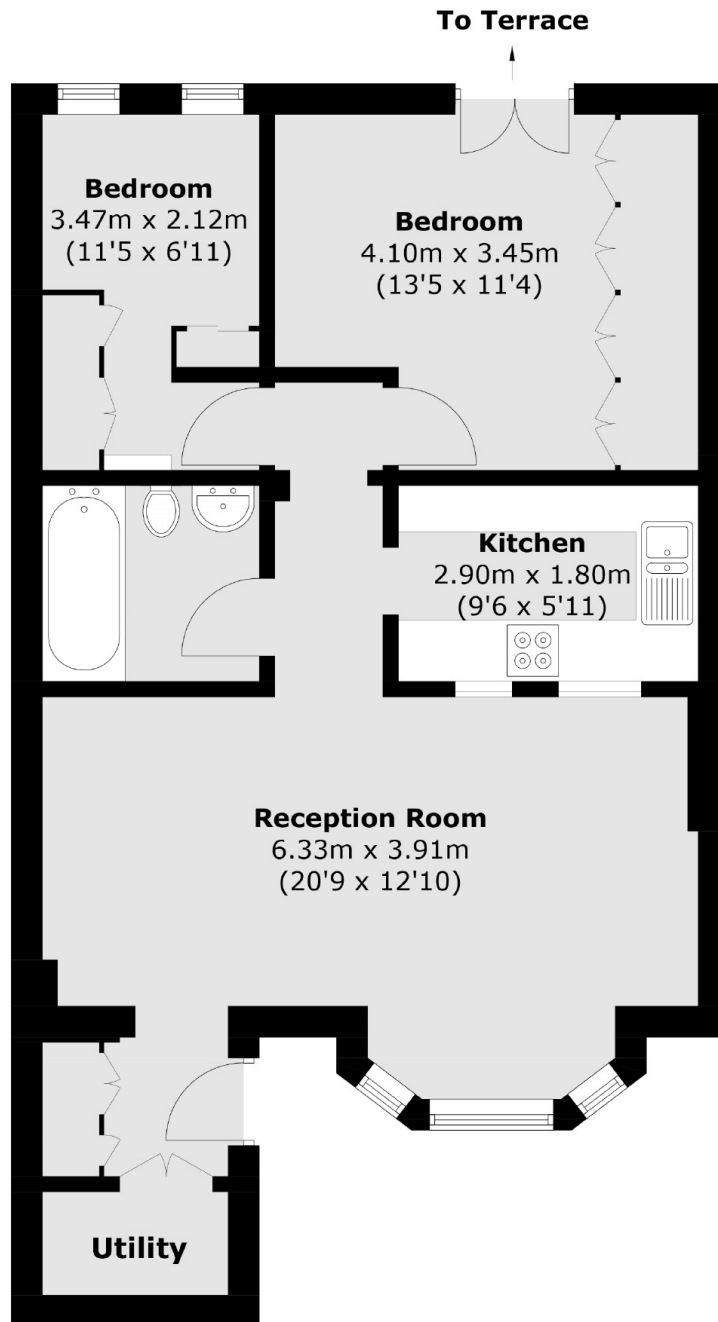
A two bedroom garden flat located in this charming Victorian converted building. The property has a share of freehold and will be sold with no onward chain.

Extremely well located just off West End Lane, the variety of shops, restaurants, open spaces and multiple transport links are only a short walk away.

Features

- Victorian Conversion
- Private Garden
- Two Bedrooms
- Maisonette
- Share Of Freehold
- No Onward Chain

Hemstal Road,
London, NW6



Lower Ground Floor

Total area (approx.): 62.2 sq. m (669.5 sq. ft)