



## Goldhurst Terrace, NW6

£485,000

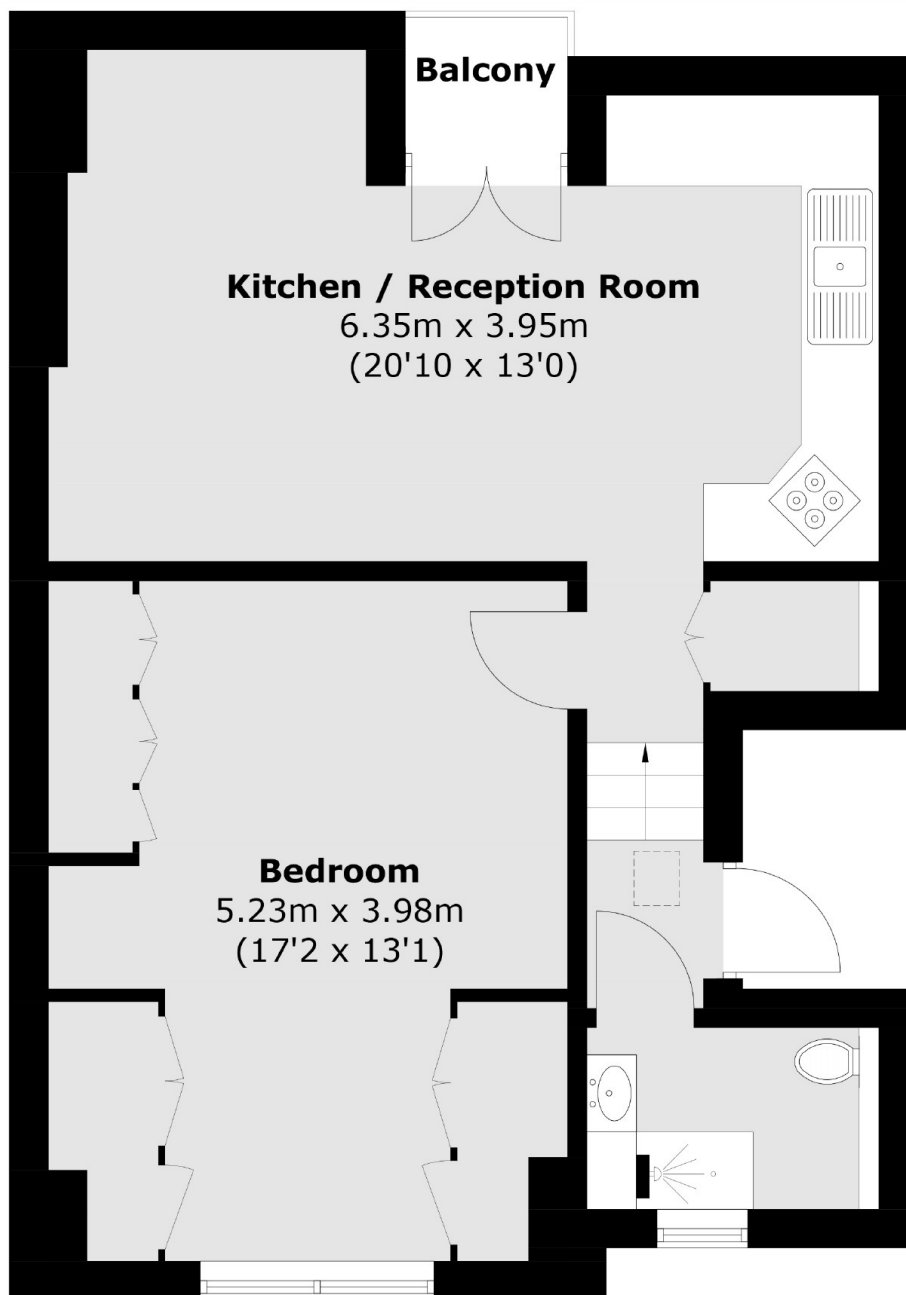
A one bedroom apartment with a private balcony situated on the third floor of this Victorian building. The property is perfect for a first time buyer and has a share of freehold.

Goldhurst Terrace is a popular residential street which is superbly located between trendy West End Lane and Finchley Road, with its array of shops, bars and restaurants.

### Features

- Victorian Conversion
- Third Floor
- Open Plan
- Private Balcony
- Share Of Freehold
- No Onward Chain

# Goldhurst Terrace, London, NW6



## Third Floor

Total area (approx.): 53 sq. m (570.4 sq. ft)  
Balcony area (approx.): 1.2 sq. m (12.9 sq. ft)