



Priory Road, NW6
£3,300,000



Priory Road, NW6

A fantastic opportunity to purchase an eight bedroom Victorian house on a prime road in South Hampstead. This Victorian home is currently split into two apartments but is part of one freehold and can be made into a single dwelling by reinstating the staircase on the lower ground floor.

The lower ground floor has three double bedrooms, two with en suite bathrooms followed by a further guest WC. There is a separate kitchen and reception room leading to the conservatory with doors opening on to a patio with stairs up to the very substantial west facing garden.

The upper floor apartment is spread over three floors. There is a large reception room with wood floors, high ceilings and a separate kitchen. There is also a study with a private roof terrace which is ideal for relaxing with a cup of tea. On the second floor the principal bedroom is a great size with an array of fitted wardrobes and an en suite bathroom. The second bedroom is also a great size and the third bedroom is ideal as a children's playroom. There are two further double bedrooms on the top floor with fitted wardrobes, family bathroom and utility room.

Located in the ever popular West Hampstead Conservation Area close to the public transport of both West Hampstead and Finchley Road.

Features

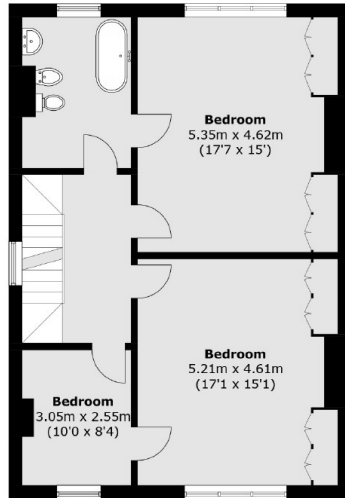
- Period Building
- Freehold
- Semi Detached
- Eight Bedrooms
- Four Bathrooms
- No Onward Chain



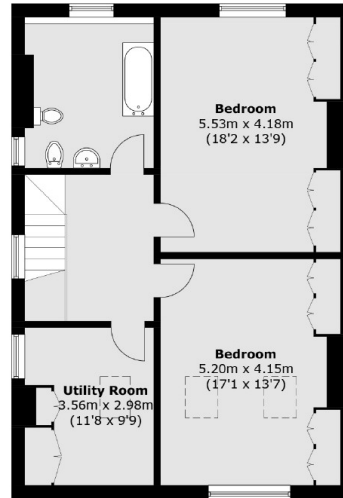




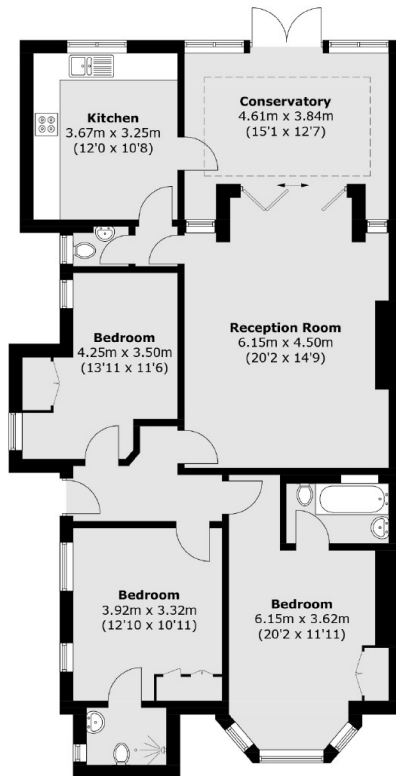
Priory Road, London, NW6



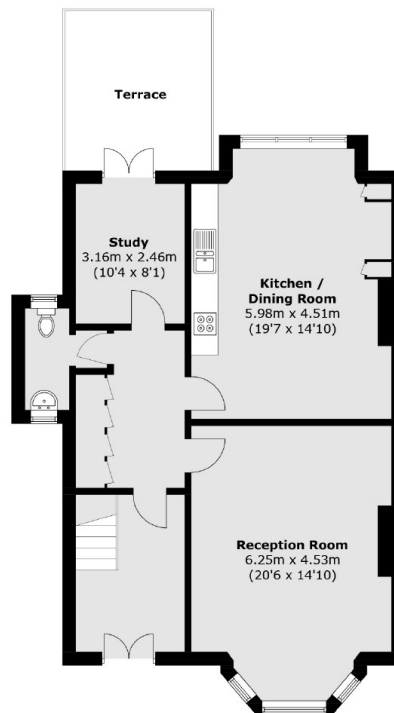
First Floor



Second Floor



Lower Ground Floor



Ground Floor

Total area (approx.): 347.7 sq. m (3,742.6 sq. ft)
Balcony: 11.8 sq. m (127.0 sq. ft)