



Finchley Road, NW3

£1,475,000

An extremely spacious and bright four bedroom apartment set on the top floor of this prestigious portered mansion block with a private balcony and access to stunning communal gardens.

Superbly located between Hampstead and West Hampstead with a number of different options for public transport close by. Hampstead Heath is just over a mile away.

Features

- Four Bedrooms
- Two Bathrooms
- Balcony
- Top Floor
- Communal Gardens
- Mansion Block



Finchley Road, NW3

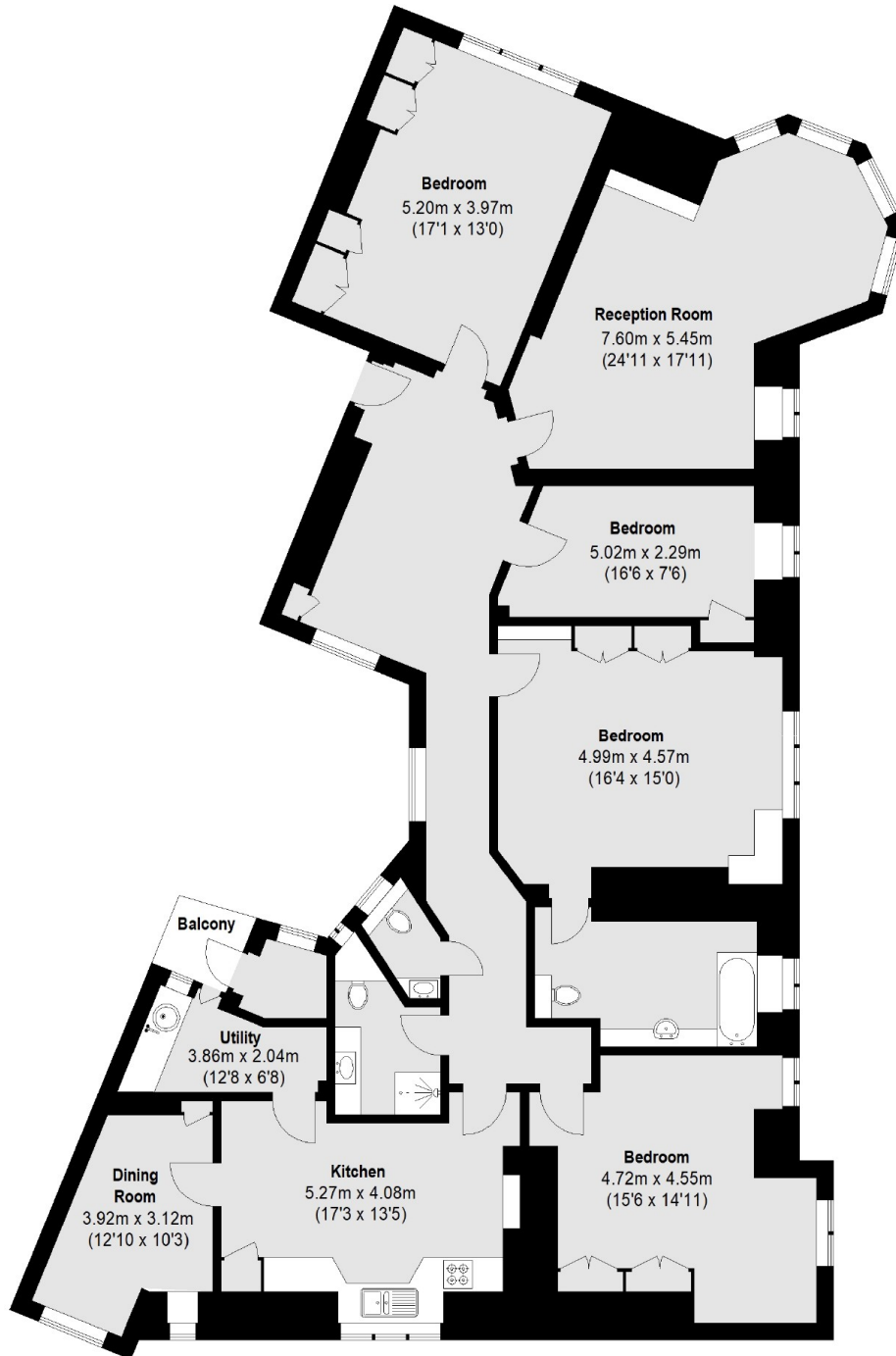
This outstanding flat is filled with character and charm and offers over 2000 sq ft of internal space including a grand entrance hall, and stunning reception room with rotunda. There is a separate kitchen, dining room, utility room with direct access on to a balcony.

In total there are four double bedrooms all with fitted wardrobes and one with a large en suite. There is also a main family bathroom and additional WC for guests.

Further benefits include a lift, access to beautifully presented communal gardens, high ceilings throughout and the abundance of light that floods into the apartment.



Finchley Road,
London, NW3



Third Floor

Total area (approx.): 194.39 sq. m (2092 Sq. ft)
Balcony: 1.90 sq. m (20 Sq. ft)