



Belsize Road, NW6

£325,000

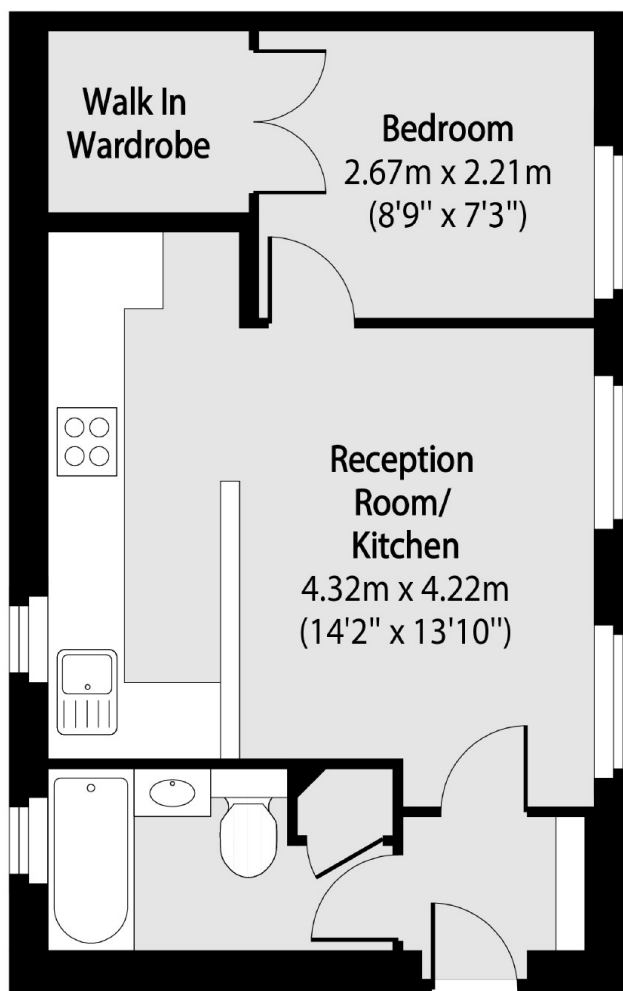
This one bedroom first floor flat would make an ideal first home. The property has an open plan kitchen, walk-in wardrobe in the double bedroom and will be sold with no onward chain.

The apartment is located on Belsize Road which is ideal for easy access to Swiss Cottage underground station. There are multiple shops and other transport amenities nearby including Finchley Road tube station.

Features

- One Bedroom
- Purpose Built
- Open Plan
- First Floor
- Walk-In Wardrobe
- No Onward Chain

Belsize Road, London, NW6



Total area (approx): 31.87 sq m (343 sq. ft)