



Dyne Road, NW6

£350,000

This immaculate first floor apartment with balcony has been lovingly cared for by the current owner and is set within a smart purpose built block.

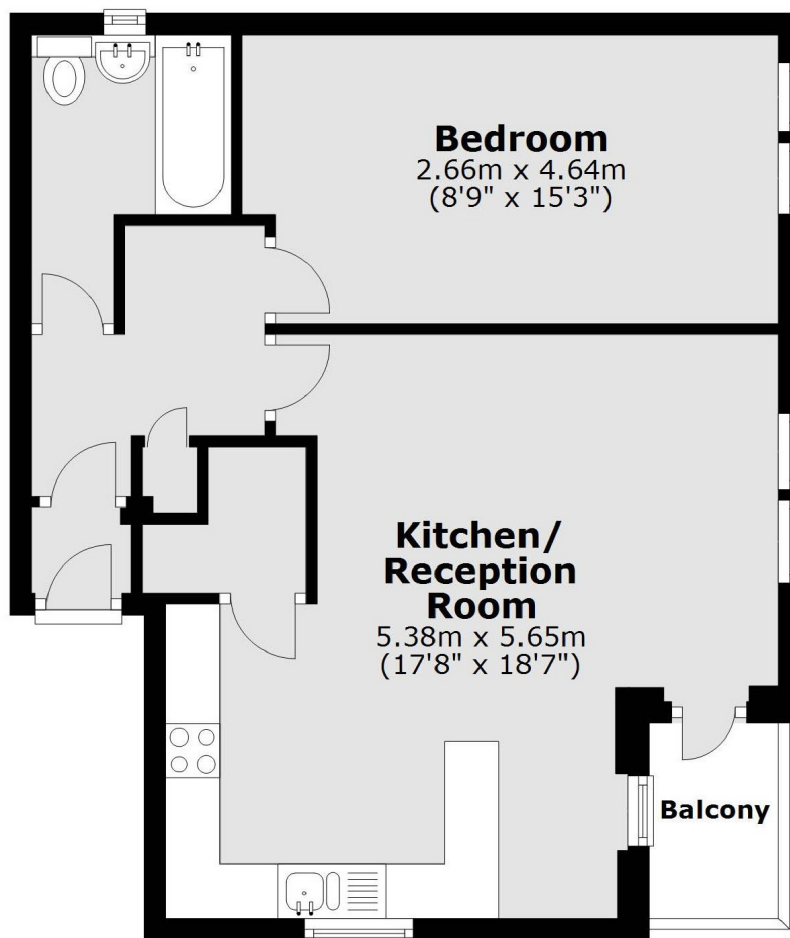
Dyne Road is a popular residential street which offers easy access to Kilburn Jubilee Line, Brondesbury Overground and the green open spaces of Kilburn Grange Park, Queens Park and West Hampstead.

Features

- First Floor
- Turnkey Condition
- Open Plan Kitchen
- Good Storage
- Bespoke Fitted Wardrobes
- Private Balcony

Dyne Road,
London, NW6

First Floor



Main area: Approx. 48.8 sq. metres (525.2 sq. feet)

Plus balconies, approx. 2.5 sq. metres (26.4 sq. feet)

Contact

To arrange a viewing call our office on the number below or visit our website.



Energy Rating: TBA. We aim to make our particulars both accurate and reliable. However they are not guaranteed; nor do they form part of an offer or contract. If you require clarification on any points then please contact us, especially if you're traveling some distance to view. Please note that appliances and heating systems have not been tested and therefore no warranties can be given as to their good working order.