



Westbere Road, NW2

£599,999

A bright and spacious first floor three bedroom period conversion located on the borders of West Hampstead. Of note is the large living room with original features including mouldings and a feature fireplace. This property is offered chain free.

Westbere Road is situated within easy reach of West Hampstead and its great array of amenities. Kilburn Station (Jubilee Line) is also a short distance away.

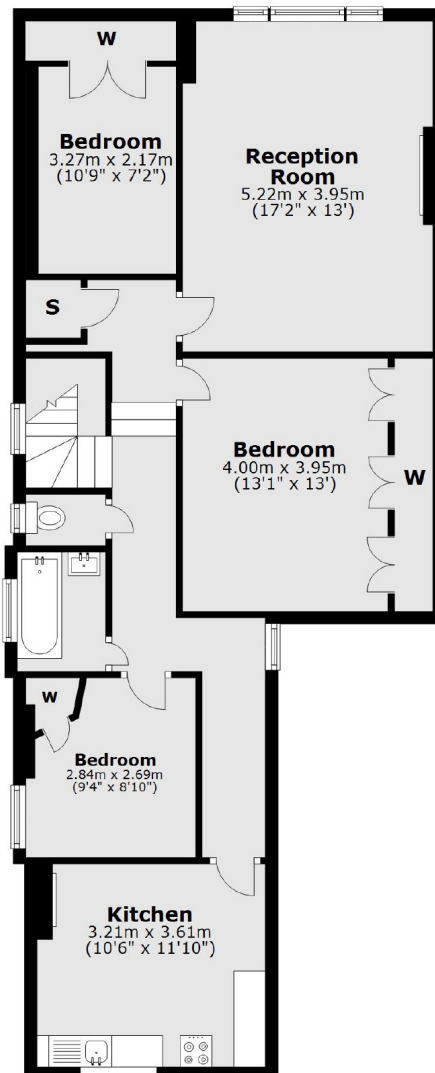
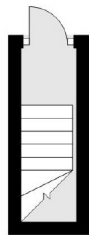
Features

Three Bedrooms
Bathroom & Separate WC
Large Kitchen
First Floor
Juliet Balcony
No Chain

Westbere Road,
London, NW2

First Floor

Ground Floor



Total area: approx. 87.8 sq. metres (944.7 sq. feet)

Contact

To arrange a viewing call our office on the number below or visit our website.



Energy Rating: E. We aim to make our particulars both accurate and reliable. However they are not guaranteed; nor do they form part of an offer or contract. If you require clarification on any points then please contact us, especially if you're traveling some distance to view. Please note that appliances and heating systems have not been tested and therefore no warranties can be given as to their good working order.