

whiteley helyar



675 ft²



2 bedrooms



shower room



parking
space

Guide Price £400,000

Flat 8, Beaumont House, College Road, Bath, BA1 5RY

A beautifully renovated two bedroom apartment in the sought after Lansdown area of the city, with off-street parking and no onward chain. On the upper ground floor of this detached period house, the flat has wonderfully large windows allowing lots of natural light into the generously proportioned principle rooms.

ACCOMMODATION

Split level entrance hall with window
Stunning sitting/dining room with impressive windows, with shutters, and feature fireplace
Contemporary fitted kitchen with integrated appliances
Two bedrooms, again with beautifully restored windows
Modern shower room

EXTERNALLY

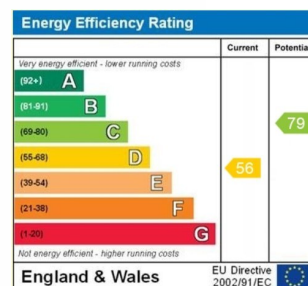
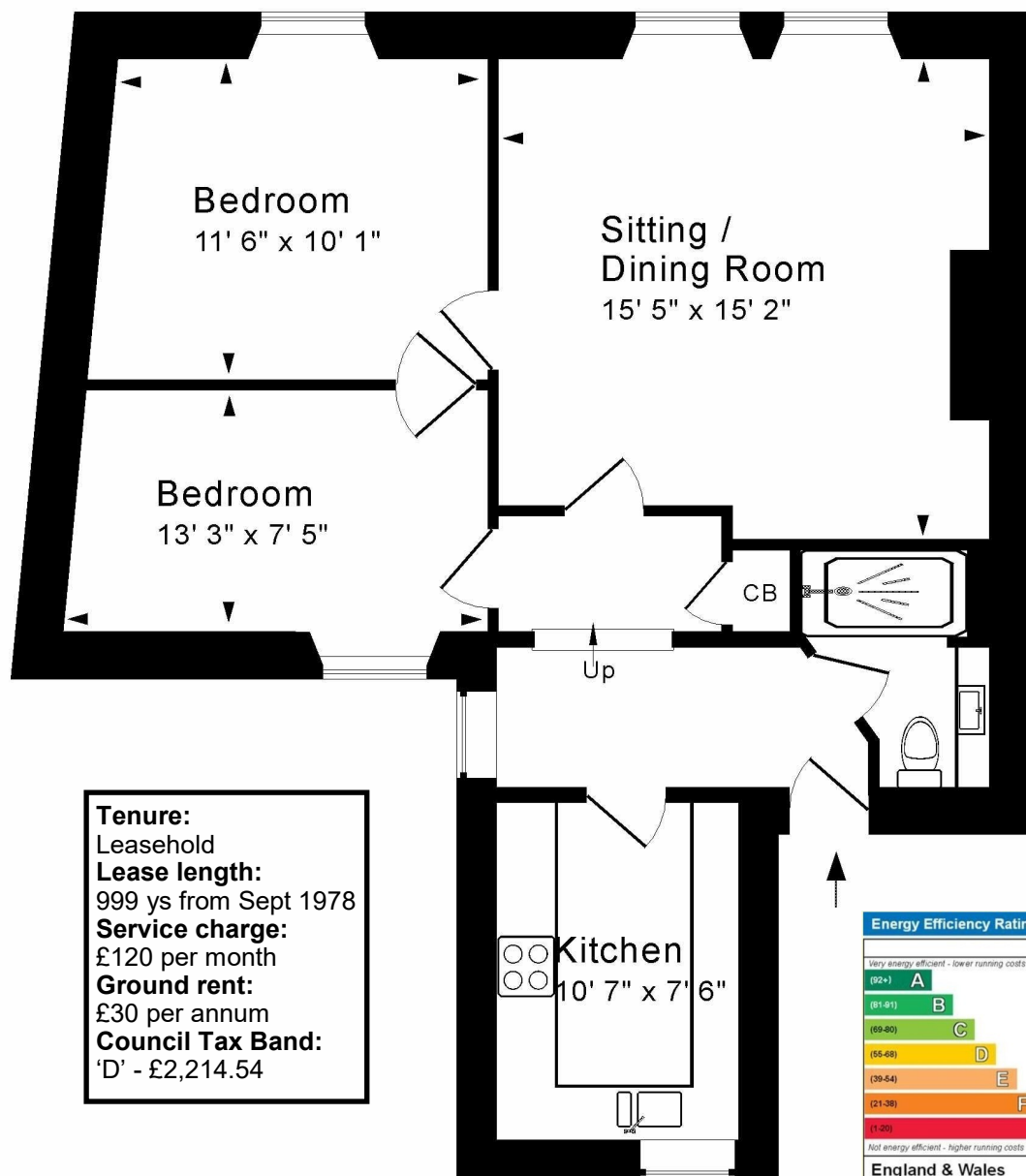
The apartment benefits from a private parking space to the front of the building, whilst there is also communal visitor parking.

LOCATION

Beaumont House is most conveniently situated in this select position on the prime northern slopes of the city. Kingswood and The Royal High schools are just a very short walk away, whilst Lansdown Squash and Tennis Club, St Stephens School, Lansdown Golf Club and Bath Racecourse are all nearby, and the house is close to open countryside. The property is well served by frequent buses to the centre of Bath (with its countless shops and amenities and only 1½ miles away), whilst easy access to the M4 is available without having to cross the city.







Upper Ground Floor

Approx. Gross Internal Floor Area 675 Sq. Ft. / 63 Sq. M

Includes Conservatories. Excludes Garages, Porches etc. unless stated

For identification purposes only. Not to scale. Copyright Jemesis Ltd 2025

Drawing Number: 172-0833

Flat 8, Beaumont House, College Road, Bath, BA1 5RY.

