

whiteley helyar



737 ft²



2 double
bedrooms



shower room



2 parking
spaces

Guide Price £500,000

Maltings Cottage, 10a Bathwick Street, Bath, BA2 6NX

DESCRIPTION

A very well presented and charming Freehold mews house in this sought after, tucked away yet central location with the huge benefit of parking for 2 vehicles. The house has been operating as a successful holiday let business for a number of years, but could equally be a fabulous base in the heart of the city.

ACCOMMODATION

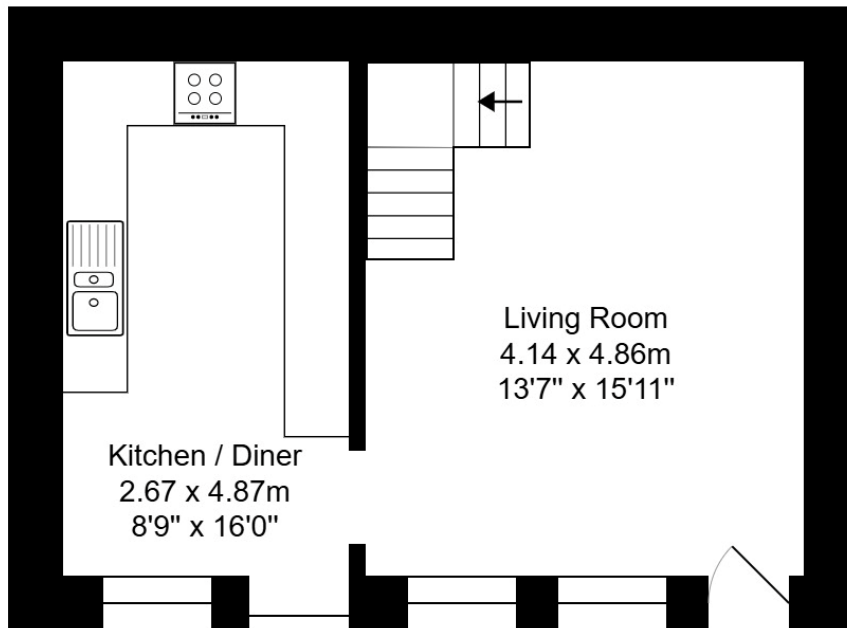
2 double bedrooms
shower room
large living room
well fitted kitchen/dining room
gas fired heating
right to park 2 vehicles in the front courtyard

LOCATION

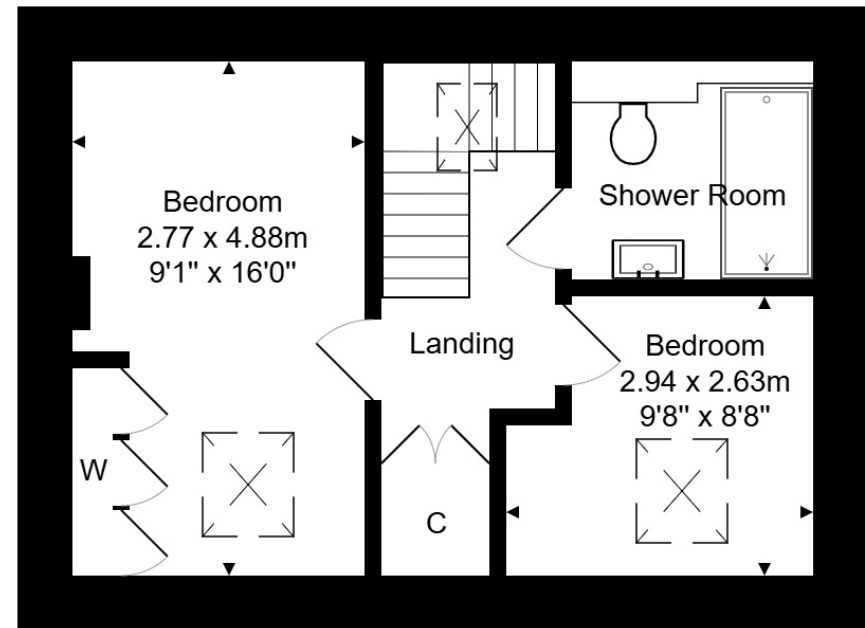
The house occupies a highly convenient and popular location through an archway off Bathwick Street and close to Sydney Gardens, Henrietta Park and the Kennet and Avon Canal. The heart of the city (with its countless shops, cafes, restaurants, Bath Spa Railway Station, The Recreation Rugby Ground and other amenities) is just an easy, flat walk away.







Ground Floor
Area: 34.4 m² ... 371 ft²



First Floor
Area: 34.0 m² ... 366 ft²

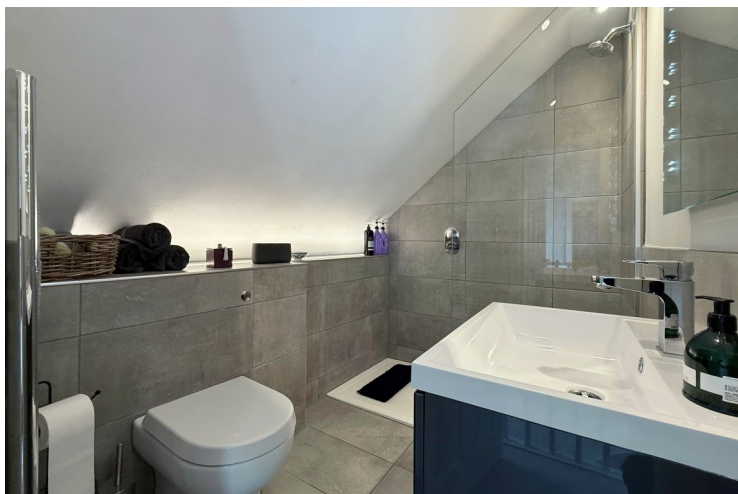
Total Area: 68.4 m² ... 737 ft²

Whilst every attempt has been made to ensure the accuracy of the floorplan contained here, measurements of doors, windows, rooms and any other items are approximate and no responsibility is taken for any error, omission or mis-statement.

This plan is purely for illustrative purposes only and should be used as such by any prospective purchaser.

Area includes internal and external wall thickness

www.epcassessments.co.uk



Tenure: Freehold
Council tax band: Not Applicable

