

whiteley helyar



595 ft²



double bedroom



bathroom



*residents parking
permit*

Guide Price £385,000

Second Floor Flat, 10 Catharine Place, Bath, BA1 2PR

A stunning second floor double bedroom apartment, in the sought after Catharine Place, with use of the central gardens and offering lovely views to both front and rear. In this prime central location, the flat has been sympathetically updated to create a modern, bright home, and is offered with no onward chain.

ACCOMMODATION

Sitting/dining room with views over the rear of the Royal Crescent

Modern fitted kitchen

Double bedroom overlooking the garden square

Well appointed shower room

EXTERNALLY

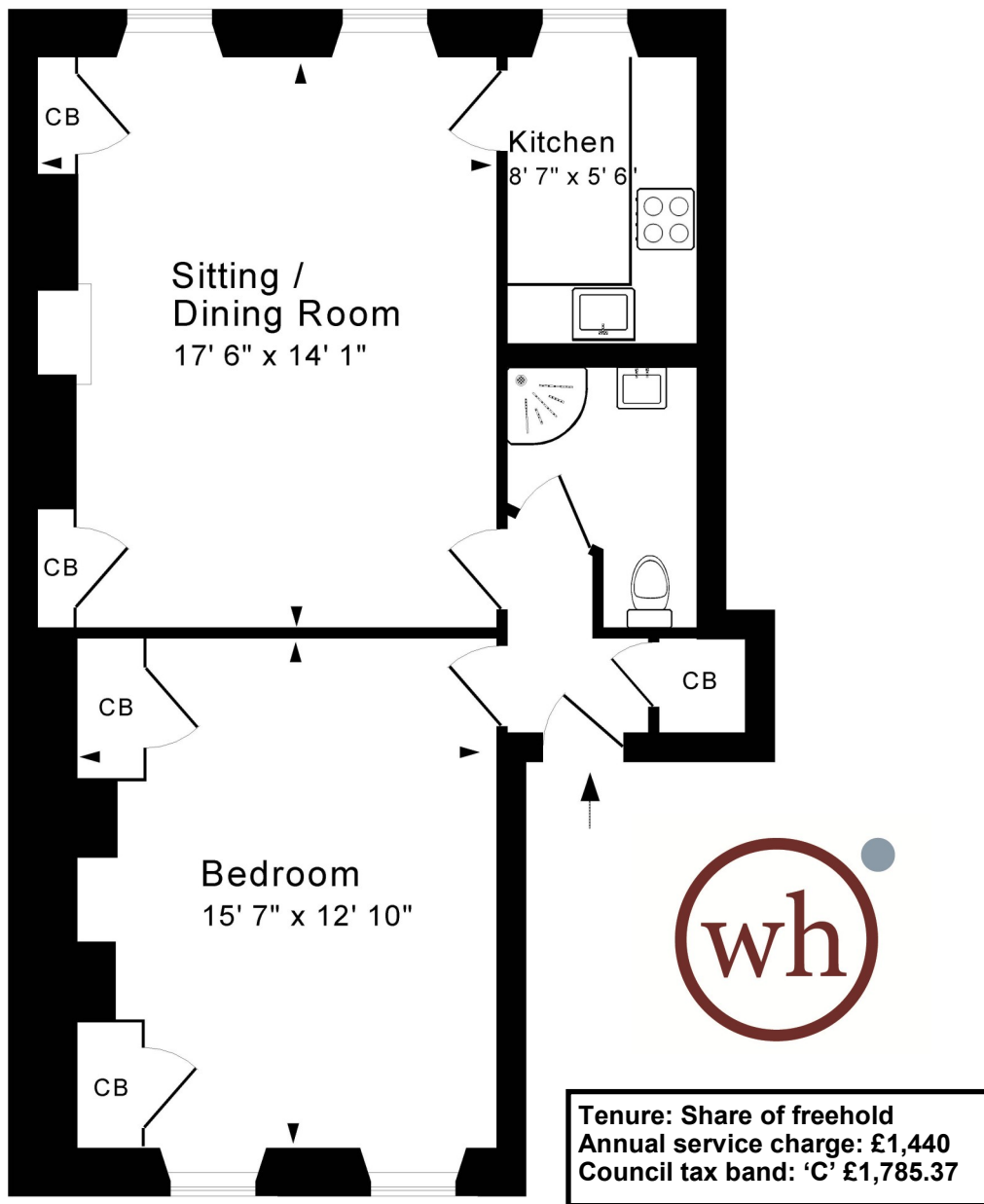
As a resident of Catharine Place, you have access to the fabulous gardens in the centre of the square. Within wrought iron railings, the two gardens are planted with a variety of trees, shrubs and wildflowers, with bench seating in both from which you can enjoy this tranquil space in the heart of the city.

LOCATION

The apartment occupies a wonderful position in this prettiest of city squares. It is next to the Royal Crescent, the iconic Circus and Royal Victoria Park (with its Botanical Gardens, café, tennis courts and golf). Shops, galleries, cafés and restaurants in Margaret's Buildings and Brock Street are very close by, whilst the numerous amenities in the very centre of Bath are within a short walk.







Second Floor

Approx. Gross Internal Floor Area 595 Sq. Ft. / 55 Sq. M

For identification purposes only. Not to scale.

Copyright Jemesis Ltd 2023

Drawing Number:172-0593

