

whiteley helyar



692 ft²



2 bedrooms



1 bathroom



residents'
permit
parking

Guide Price £280,000

Flat 5, 11 Kensington Place, Bath, BA1 6AP

A light and airy two bedroom top floor apartment with lovely widespread southerly views, offered with no onward chain in this most convenient location just a short level walk from the centre of Bath.

ACCOMMODATION

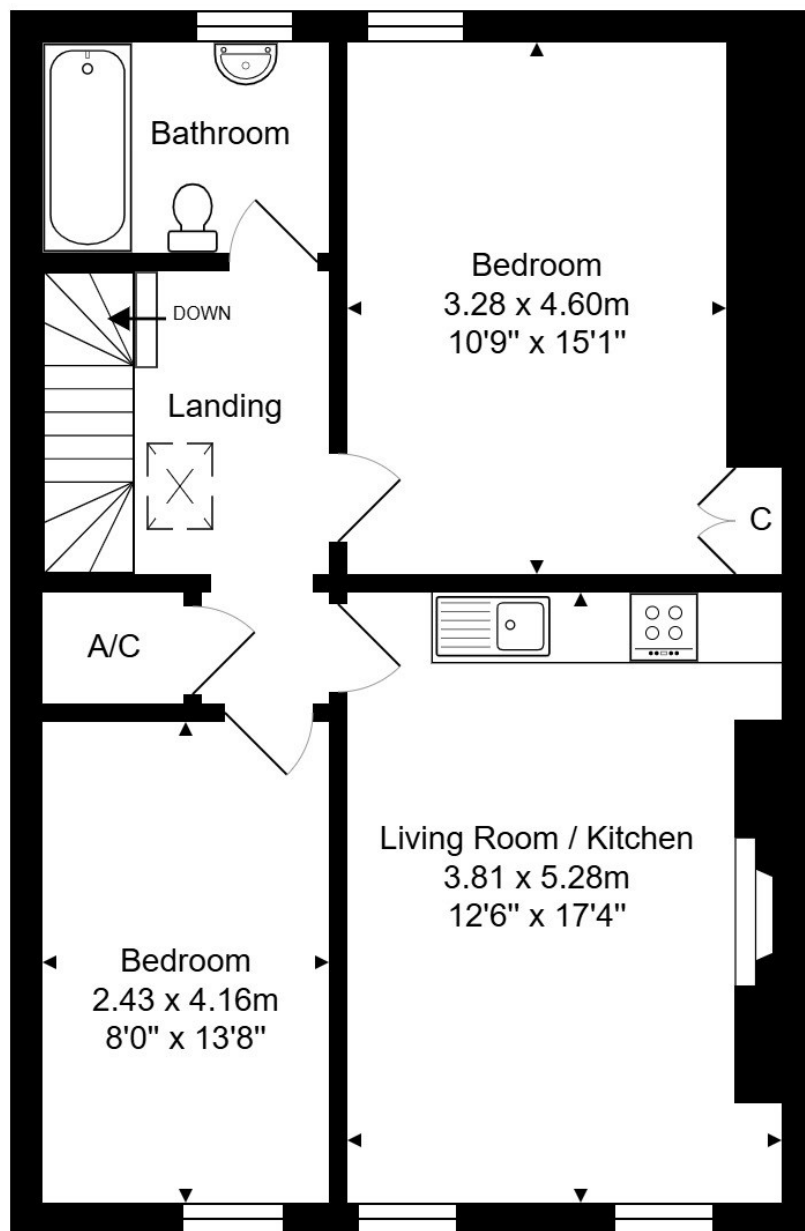
2 bedrooms
bathroom
living room with kitchen
central hallway with storage
electric heating
residents car parking permits available (zone 27)

LOCATION

The apartment occupies a popular and handy position on the edge of the city centre and close to the excellent range of shops and amenities in Larkhall. Lovely walks along the River Avon, the Kennet & Avon canal and across Kensington Meadows are very close at hand, as is access onto the cycle path. There is a very frequent bus service into the heart of Bath, whilst easy access to the M4 is available without having to cross the city.







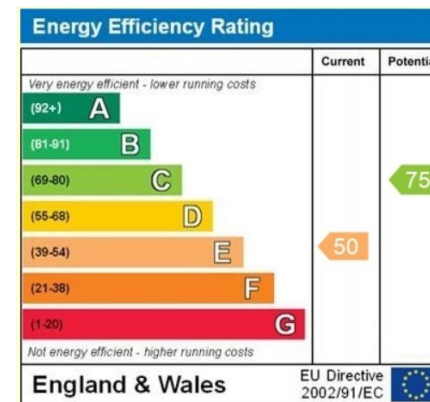
Total Area: 64.3 m² ... 692 ft²

Whilst every attempt has been made to ensure the accuracy of the floorplan contained here, measurements of doors, windows, rooms and any other items are approximate and no responsibility is taken for any error, omission or mis-statement.

This plan is purely for illustrative purposes only and should be used as such by any prospective purchaser.

Area includes internal and external wall thickness

www.epcassessments.co.uk



Tenure: Share of Freehold
Service Charge: £150 pcm
Council Tax Band: 'B' £1,722.41 pa

