

whiteley helyar



1,180 ft²



2 bedrooms



2 bathrooms



*permit parking
available*

Guide Price £700,000

Ground Floor Apartment, 5 Henrietta Street, Bath, BA2 6LL

DESCRIPTION

A fabulous ground floor apartment in an impressive Grade I Listed Georgian townhouse, offering spacious and elegant accommodation right in the very heart of the city centre.

ACCOMMODATION

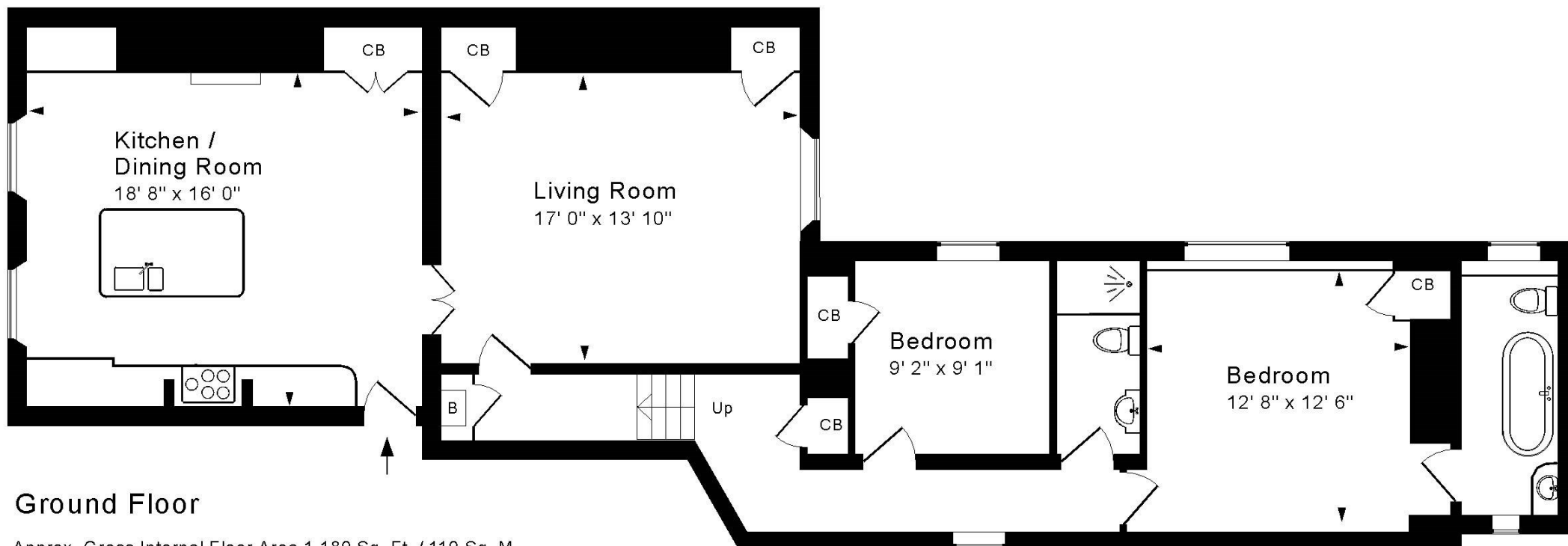
stunning kitchen/dining room
17 ft sitting/dining room with feature fireplace
2 double bedrooms
en-suite bathroom
separate shower room
electric central heating
wonderful period features

LOCATION

The apartment occupies a particularly convenient and sought after location, peacefully situated just off Great Pulteney Street and Pulteney Bridge, within a very short and level stroll of the countless shops, Bath Recreation Rugby Ground, Bath Spa Railway Station, excellent restaurants and amenities that the centre of Bath has to offer. Wonderful walks through adjacent Henrietta Park, Sydney Gardens, though beautiful National Trust land or along the Kennet and Avon canal are also close at hand.







Ground Floor

Approx. Gross Internal Floor Area 1,180 Sq. Ft. / 110 Sq. M
 Includes Conservatories. Excludes Garages, Porches etc. unless stated
 For identification purposes only. Not to scale. Copyright Jemesis Ltd 2024
 Drawing Number: 172-0765
 Ground Floor Apartment, 5 Henrietta Steet, Bath, BA2 6LL.



Energy Efficiency Rating		
	Current	Potential
Very energy efficient - lower running costs		
A (92+)		
B (81-91)		
C (69-80)		
D (55-68)		
E (39-54)		
F (21-38)		
G (-1-20)		
Not energy efficient - higher running costs		
England & Wales	EU Directive 2002/91/EC	



Tenure: Leasehold - 999 years from 1977
Ground Rent: £25 per year
Service Charge: Approximately £200 per month
Council Tax Band: 'C' = £1,872.94

