

whiteley helyar



650 ft²



2 bedrooms



two shower
rooms



resident's
permit
parking

Guide Price £400,000

Flat 3, 1 Manvers Street, Bath, BA1 1JQ

A beautifully presented two bedroom third floor city centre apartment, currently operated as a 'holiday let' with full permissions, and offered with no onward chain. Ideally located between the railway station and Bath Abbey, the flat has lovely views over St John the Evangelist's Church and the hills of Bathwick Meadow beyond.

ACCOMMODATION

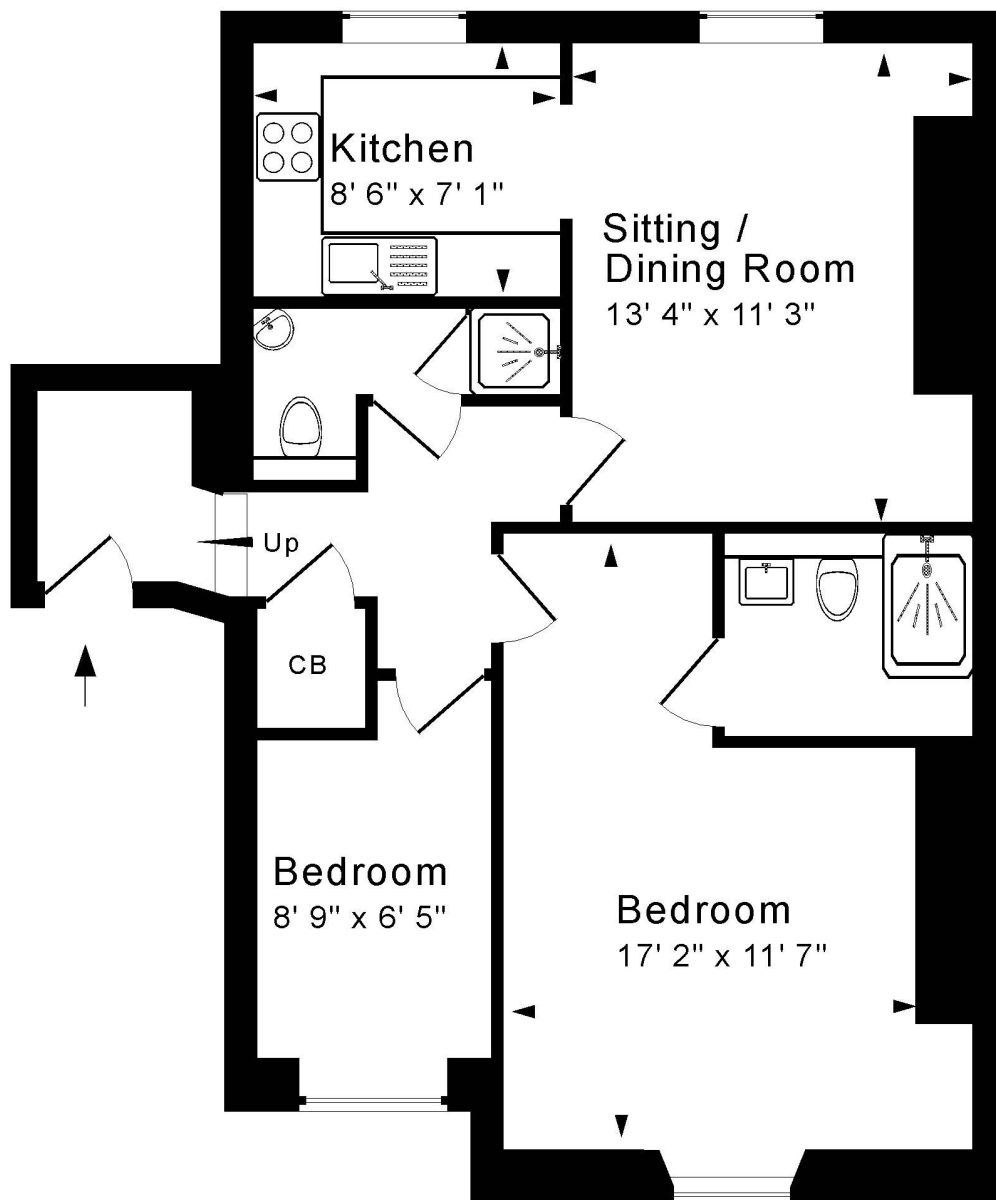
Entrance hall
Sitting room with lovely views
Modern fitted kitchen with breakfast bar
Main bedroom with en-suite shower room
Additional shower room
Second bedroom/office

LOCATION

The apartment occupies an excellent, central location in the city - a stone's throw from Bath Abbey, Parade Gardens, The Recreation Ground (Bath Rugby) and Bath Sports and Leisure Centre. The extensive range of local amenities on offer in the centre of Bath are within a short level walk, as is Bath Spa train (less than 5 minutes away on foot) with its direct line to London Paddington. A wonderful selection of bars, cafés and restaurants plus excellent shopping can also be found 'on the doorstep'.







Third Floor

Approx. Gross Internal Floor Area 650 Sq. Ft. / 60 Sq. M
 Includes Conservatories. Excludes Garages, Porches etc. unless stated
 For identification purposes only. Not to scale. Copyright Jemesis Ltd 2025
 Drawing Number: 172-0811
 Flat 3, 1 Manvers Street, Bath, BA1 1JQ.



Tenure: Leasehold
Lease Length: 999 years from 1 July 2007
Service charge: £117.85 per month
Council Tax: TBC

