

whiteley helyar



870 ft²



2 bedrooms



bathroom



resident's
permit
parking

Guide Price £375,000

Garden Maisonette, 8 City View, Bath, BA1 5JQ

A wonderful two double bedroom garden maisonette, located just to the north of the city centre, beautifully presented and offering stunning views. Just past Camden Crescent, the apartment occupies the ground and lower ground floors of a listed Georgian house, whilst the southerly garden is arranged over several terraces.

ACCOMMODATION

Sitting room
Recently fitted kitchen
Conservatory with access to the garden
Two double bedrooms
Vaulted bathroom with underfloor heating

EXTERNALLY

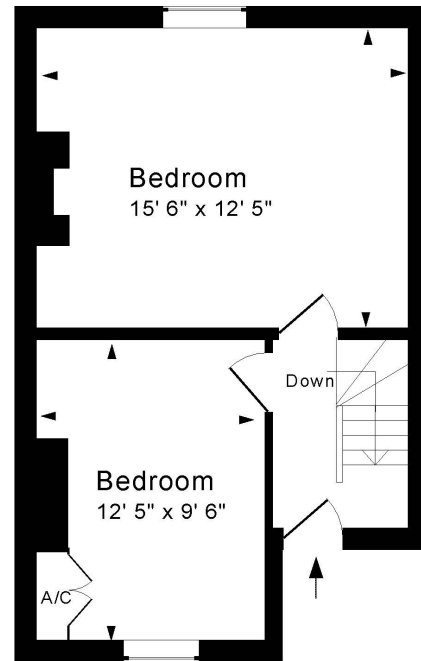
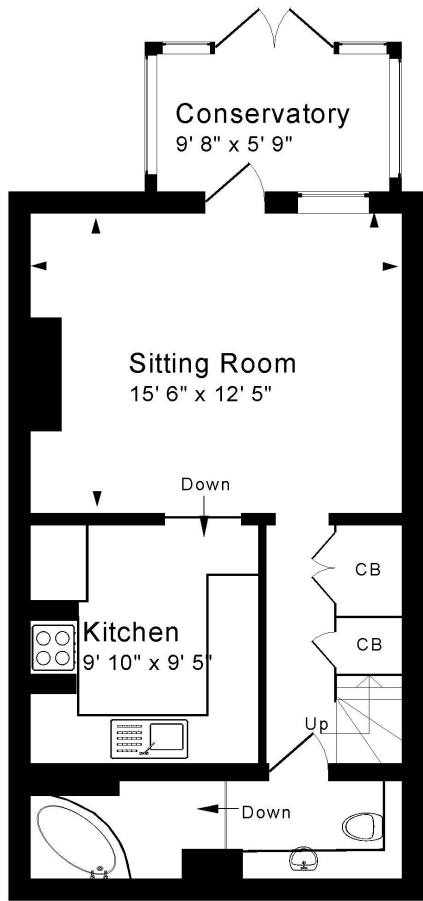
On stepping from the conservatory, a patio provides a superb area for a table and chairs. A few steps then lead down to a further patio, ideal for the barbeque and a great place from which to enjoy those views. The remainder of the enclosed garden is over a couple more levels, which have previously been used as a vegetable garden.

LOCATION

City View is an attractive terrace of Georgian houses, most conveniently situated East of Lansdown Road, just beyond Camden Crescent. It is only a short walk from the wide variety of amenities and shops that the city centre has to offer, whilst other shops on Claremont and in Larkhall are close by. The flat is served by regular buses to the city centre, and the M4 is available without having to cross Bath.







Ground Floor

Garden Floor

Approx. Gross Internal Floor Area 870 Sq. Ft. / 81 Sq. M
 Includes Conservatory
 For identification purposes only. Not to scale. Copyright Jemesis Ltd 2024
 Drawing Number: 172-0788
 Garden Flat, 8 City View, Bath, BA1 5JQ.

