

whiteley helyar



1,150 ft²



3 bedrooms



2 bathrooms



residents permit
available

Guide Price £650,000

Second Floor Apartment, 1 Camden Crescent, Bath, BA1 5HY

Second Floor Apartment, 1 Camden Crescent, Bath, BA1 5HY

DESCRIPTION

A very well presented and stunning second floor apartment in an iconic and elegant end of terrace house. Built circa 1788, Listed Grade II and with a fabulous bright and sunny location, the apartment enjoys one of the finest panoramic views in Bath.

ACCOMMODATION

3 bedrooms
wonderful sitting room with bow window
gas fired heating

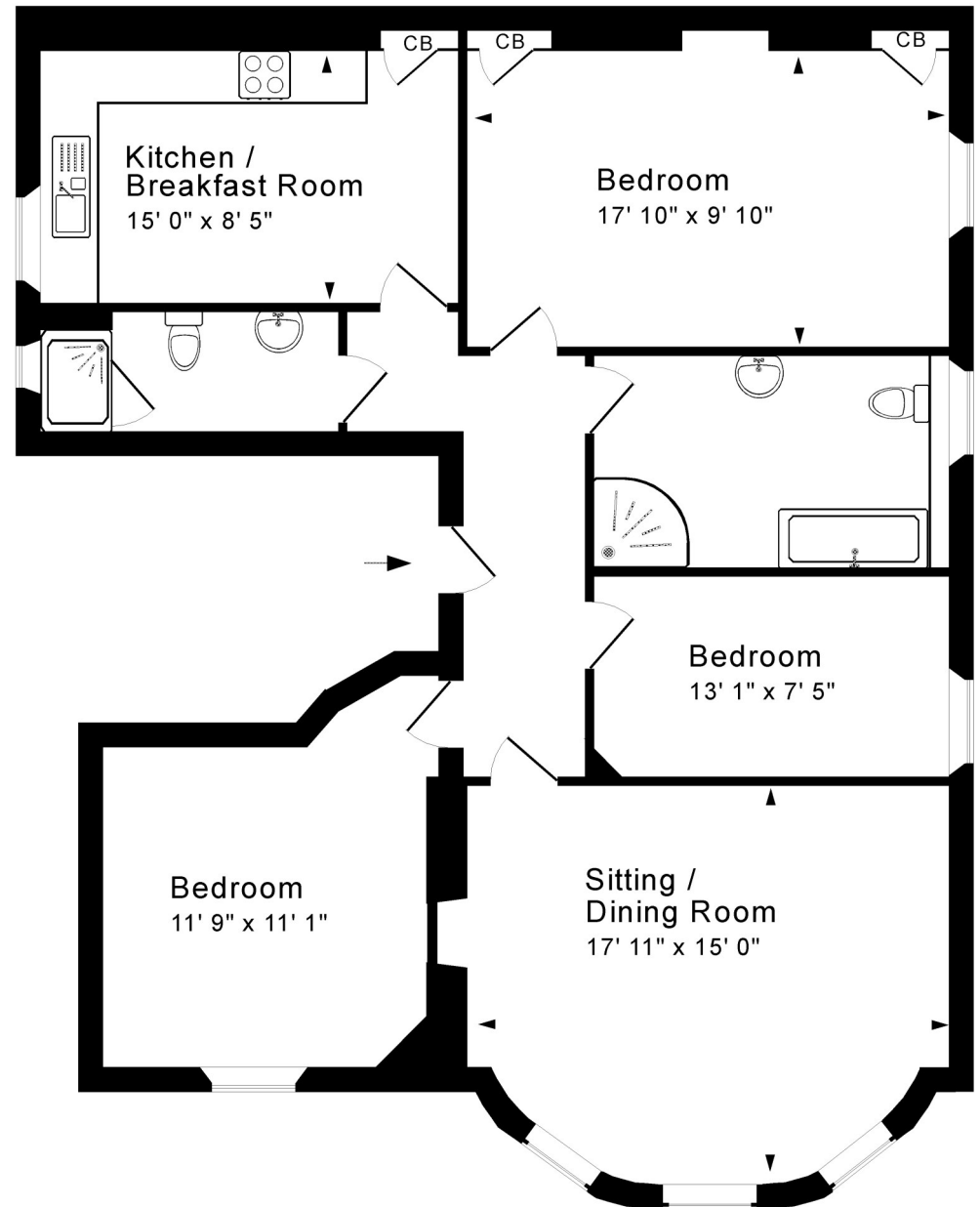
bathroom and separate shower room
well fitted kitchen/breakfast room
small communal garden

LOCATION

1 Camden Crescent occupies a particularly splendid and commanding position. It is also most conveniently placed, being close to Hedgemoad Park and just a short walk from the many shops, restaurants, Bath Spa Railway Station and other amenities in the heart of the city. Swift access to the M4 is also available without having to cross Bath.







Second Floor

Approx. Gross Internal Floor Area 1,150 Sq. Ft. / 107 Sq. M
Includes Conservatories. Excludes Garages, Porches etc. unless stated
For identification purposes only. Not to scale. Copyright Jemesis Ltd 2022
Drawing Number:172-0532
Second Floor Apartment, 1 Camden Crescent, Bath, BA1 5HY.



Tenure: Share of Freehold
Annual service charge: Approximately £2,400
Council tax band: E - £2,333.17