

whiteley helyar



805 ft²



double bedroom



bathroom



permit parking

Guide Price £500,000

Ground Floor Flat, 11 Cavendish Crescent, Bath, BA1 2UG

An elegant and beautifully presented ground floor apartment at the end of this wonderful sweeping crescent enjoying a wonderful open outlook over Victoria Park and benefitting from use of gated communal gardens to the front.

ACCOMMODATION

entrance hall
sitting dining room with feature fireplace
kitchen
bedroom
bathroom

EXTERNALLY

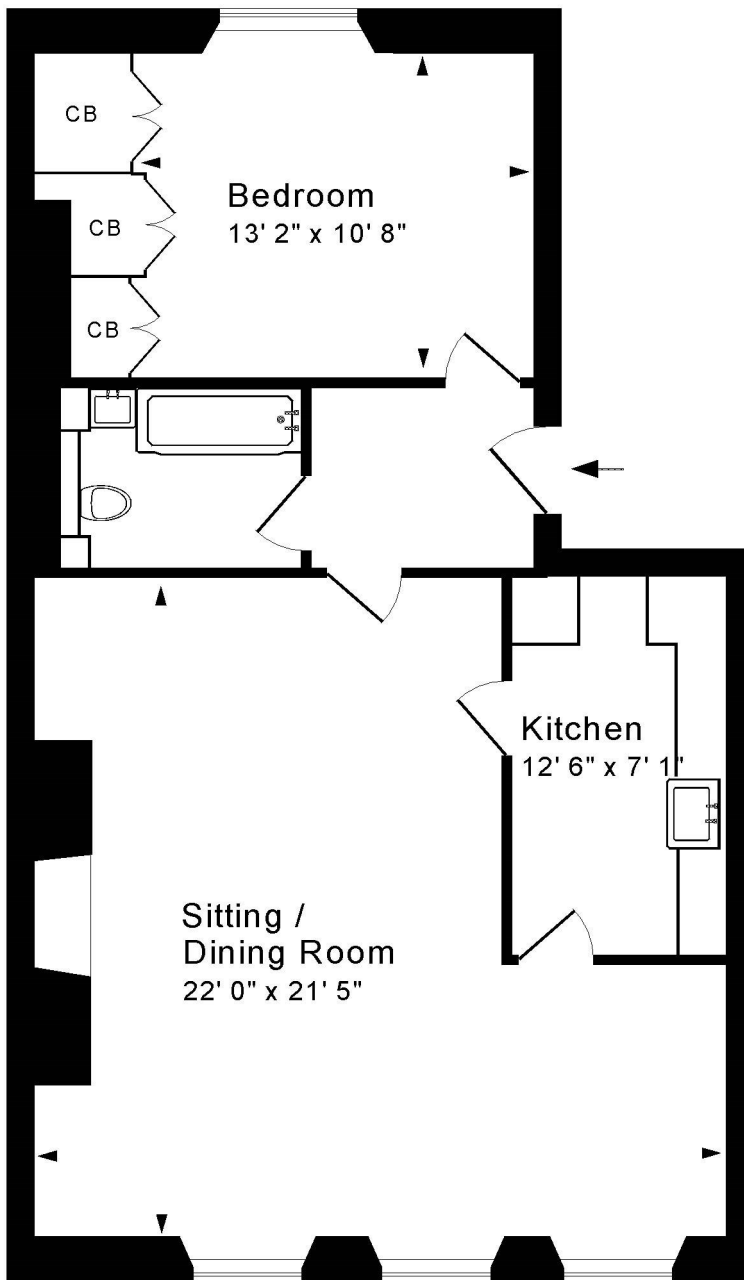
There are well maintained gated communal gardens to the front of the crescent mainly laid to lawn planted with an array of flowers shrubs and trees.

LOCATION

Cavendish Crescent occupies a highly select and sought after location, next to the High Common and Royal Victoria Park. The various shops and amenities in St James Square are closeby, with the countless facilities in the centre of Bath just a short walk beyond. Wonderful walks along the Cotswold Way are close at hand, whilst easy access to the M4 is available without having to cross the city.







Annual Service Charge - £1,214.36 (2024/2025)
Share of Freehold - 999 years from 24th June 1975
Council Tax Band = 'D' £2,107.05



Ground Floor

Approx. Gross Internal Floor Area 805 Sq. Ft. / 75 Sq. M
 Includes Conservatories. Excludes Garages, Porches etc. unless stated
 For identification purposes only. Not to scale. Copyright Jemesis Ltd 20:
 Drawing Number:172-0754
 Ground Floor Flat, 11 Cavendish Crescent, Bath, BA1 2UG.