

whiteley helyar



505 ft²



double bedroom



shower room



*parking permit
available*

Guide Price

£425,000

Milliner's House, 38 Belvedere, Bath, BA1 5HR

DESCRIPTION

A delightful Listed period House in the centre of Bath, beautifully refurbished and retaining a number of attractive and original period features. The property offers charming and characterful accommodation in this most convenient and sought after location.

ACCOMMODATION

double bedroom
kitchen

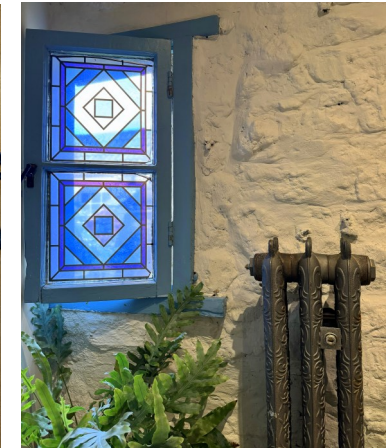
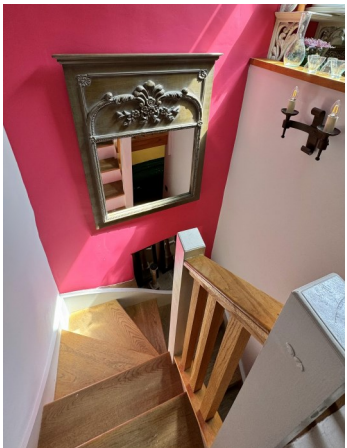
shower room
further lobby/sitting area

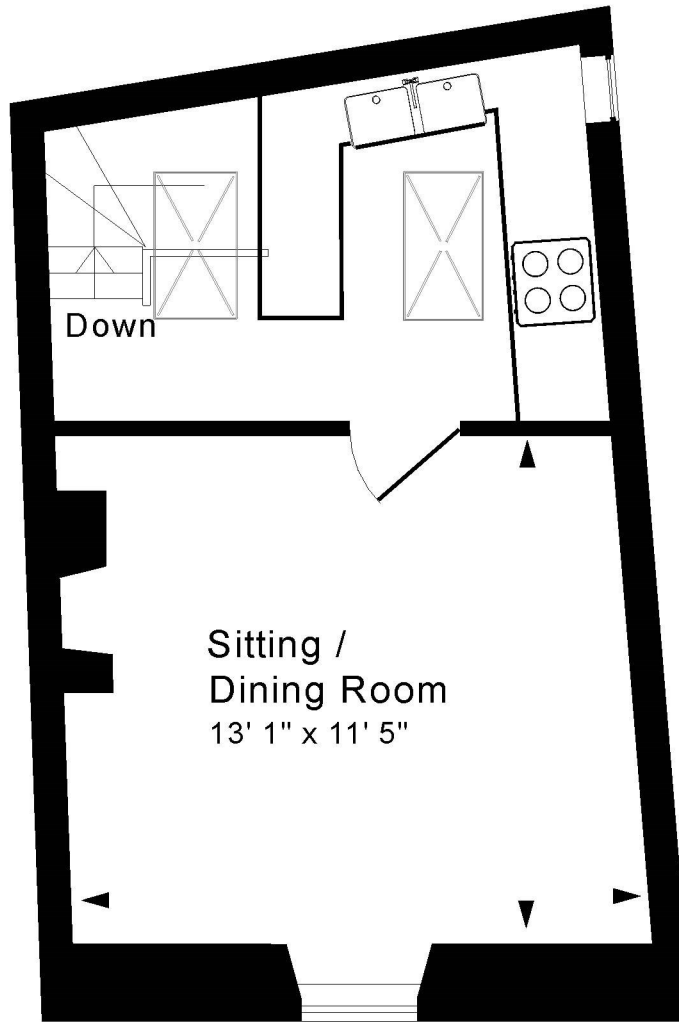
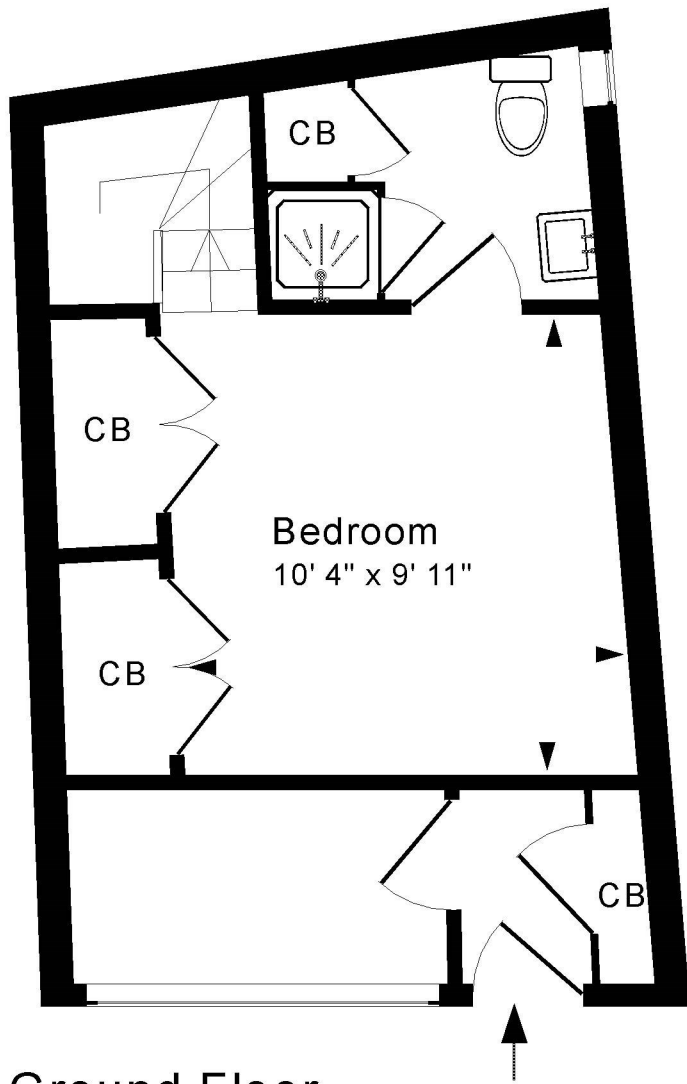
sitting room
gas fired heating

LOCATION

Milliner's House occupies a most convenient position in the heart of Bath, on the popular lower slopes of Lansdown Road. Next to the lovely Hedgemoor Park, the property is so close to the countless shops and amenities in the middle of the city, whilst the deli, grocery shops, coffee shop, pub, chemist and newsagent in St James's Square and on Julian Road are also close to hand, with swift access to the M4 available without having to cross the centre.







Tenure: Freehold
Council Tax Band: 'B' £1,638.83

Approx. Gross Internal Floor Area 505 Sq. Ft. / 47 Sq. M
Includes Conservatories. Excludes Garages, Porches etc. unless stated
For identification purposes only. Not to scale. Copyright Jemesis Ltd 2024
Drawing Number: 172-0750
38 Belvedere, Bath, BA1 5HR.

