

whiteley helyar



405 ft²



1 bedroom



bathroom



permit
parking

Guide Price £250,000

Flat 4, 29 Great Pulteney Street, Bath, BA2 4BU

A top floor flat, located on the iconic Great Pulteney Street, with lovely views over Henrietta Park and offered with no onward chain. Both the double bedroom and sitting room enjoy that verdant view, whilst the kitchen is open plan to the sitting room.

ACCOMMODATION

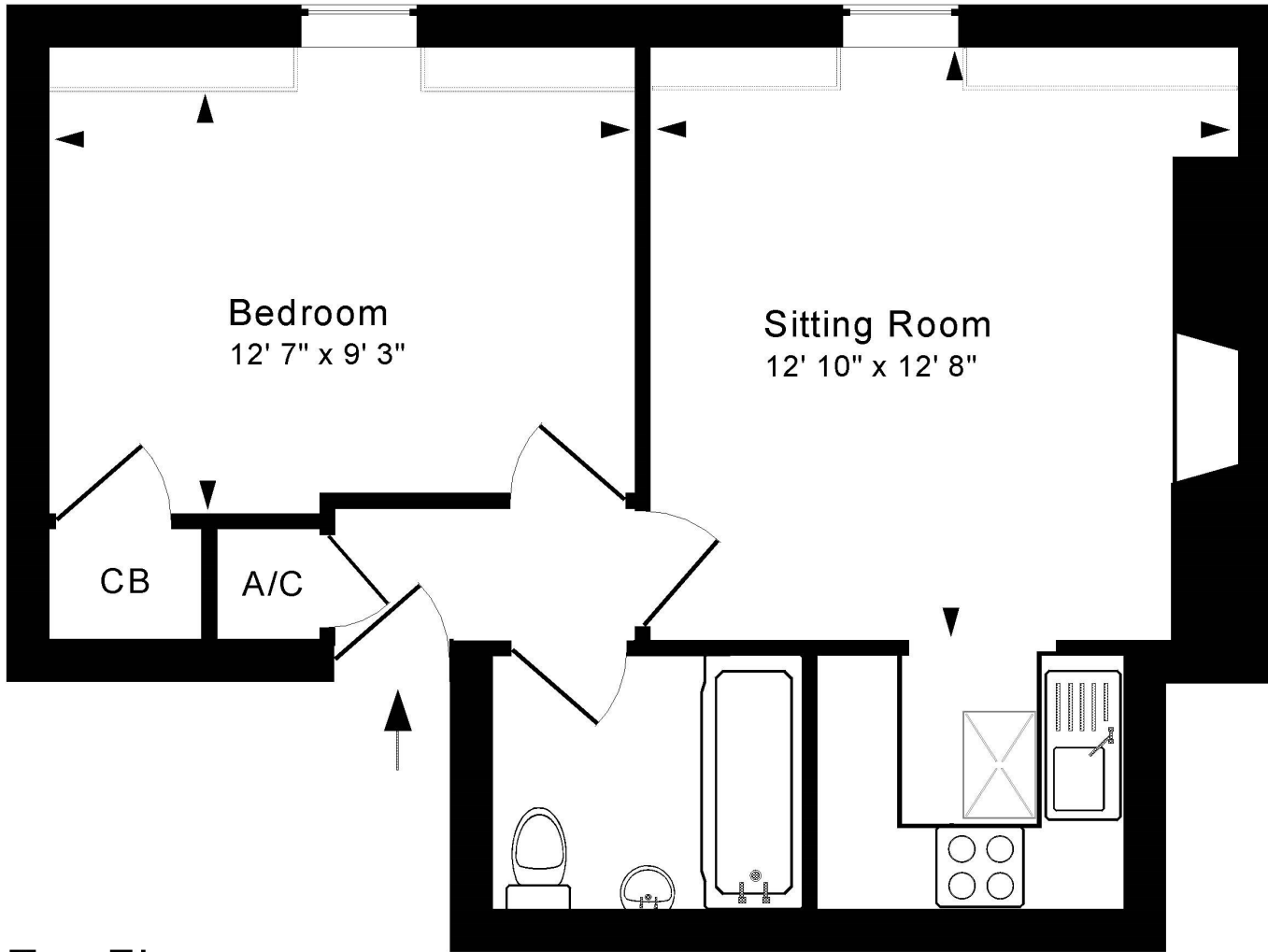
Sitting room with lovely views over Henrietta Park
Open plan kitchen
Double bedroom with built-in cupboard
Bathroom

LOCATION

Wonderfully positioned towards the end of Great Pulteney Street, adjacent to the Holburne Museum and the refurbished Sydney Gardens - with its children's playground, tennis courts and canal access - the apartment is most conveniently located in this highly sought after, central position. The extensive range of shops, restaurants and amenities in the very heart of the city are within a short level stroll, as are Bath Spa Railway Station and Bath Recreation Rugby Ground. Delightful walks through Henrietta Park and along the Kennet and Avon are also very close at hand.







Top Floor

Approx. Gross Internal Floor Area 405 Sq. Ft. / 38 Sq. M

Includes Conservatories. Excludes Garages, Porches etc. unless stated

For identification purposes only. Not to scale. Copyright Jemesis Ltd 2024

Drawing Number: 172-0690

Flat 4, 29 Great Pulteney Street, Bath, BA2 4BU.



Score	Energy rating	Current	Potential
92+	A		
81-91	B		
69-80	C		73 C
55-68	D	65 D	
39-54	E		
21-38	F		
1-20	G		



Council Tax Band: 'B' - £1,638.83
Tenure: Leasehold - 999 yrs from 1981
Service charge: £2,800.00 pa