

whiteley helyar



795 ft²



2 bedrooms



shower room



allocated
parking
space

Guide Price £570,000

30 Connaught Mansions, Great Pulteney Street, Bath, BA2 4BP

DESCRIPTION

A rare opportunity to purchase a spacious and elegant apartment (with lift access and secure gated parking) on the first floor of this impressive Grade I Listed building on Great Pulteney Street, this highly sought after and most convenient position just a few minutes level walk from the city centre.

ACCOMMODATION

2 bedrooms
large living room with feature fireplace
private parking space behind an electric gate
further extensive storage in the apartment

shower room
study area
communal reception room
lift access

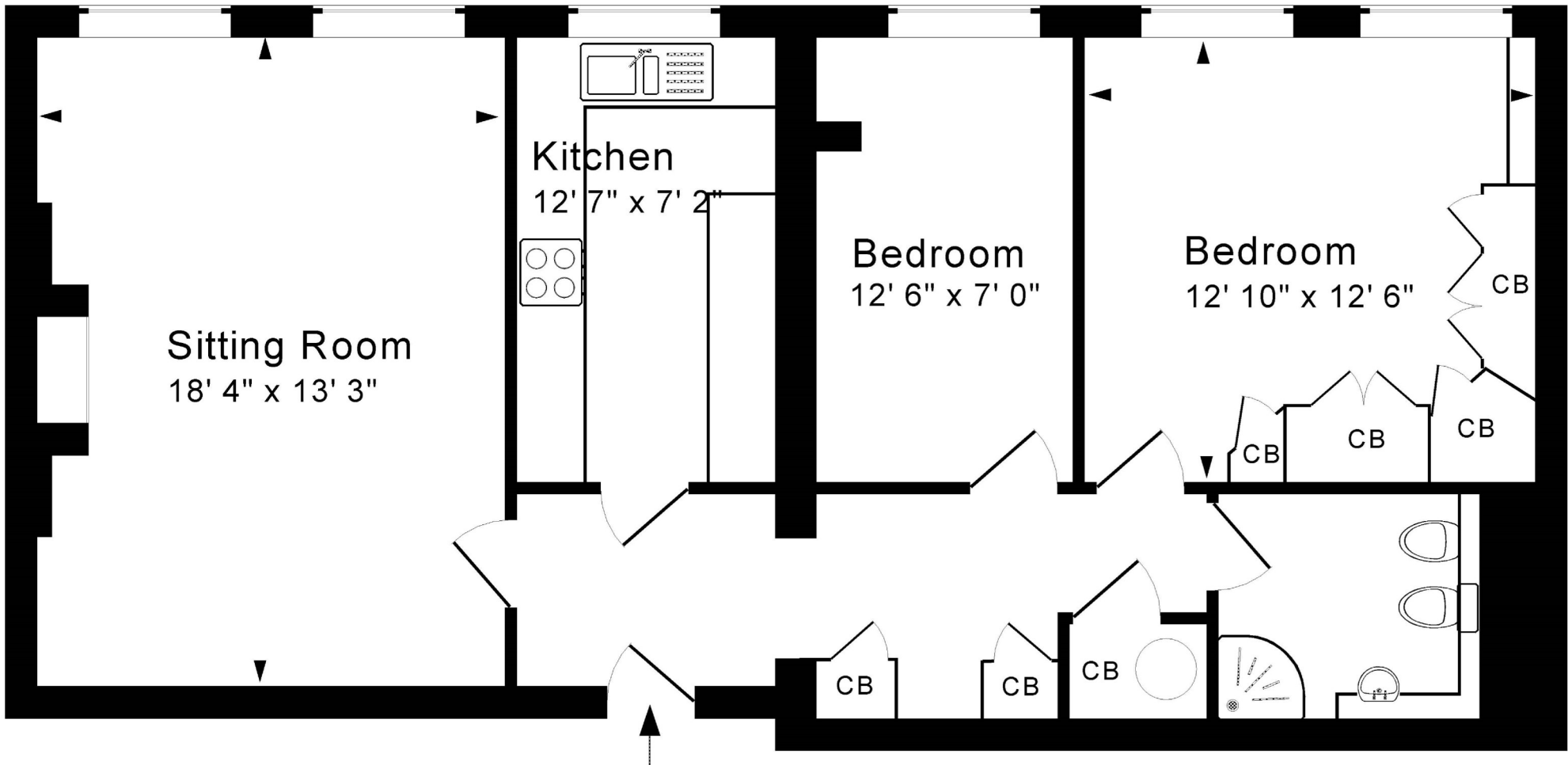
stylish remodelled kitchen
useful storage cupboard on the landing
communal bicycle store

LOCATION

The property occupies a prime position in one of the most prestigious streets in the city, within very easy level walking distance of the vast number of shops, restaurants and other amenities that the centre of Bath has to offer. Sydney Gardens and Henrietta Park are close by, as is the Recreation Rugby Ground and Bath Spa Railway Station, whilst delightful walks along the Kennet and Avon Canal are also near at hand.

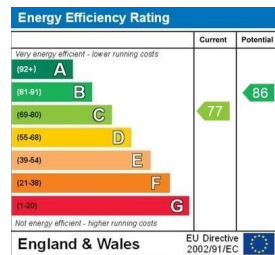






Approx. Gross Internal Floor Area 795 Sq. Ft. / 74 Sq. M
 Includes Conservatories. Excludes Garages, Porches etc. unless stated
 For identification purposes only. Not to scale. Copyright Jemesis Ltd 2023

Tenure: 999 from 1979
Ground rent: Not collected
Service charge: £2,389.52 six monthly



Communal reception