

whiteley helyar



1,795 ft²



4 bedrooms



2 bathrooms



driveway
parking

Guide Price £1,150,000

18a Bloomfield Grove, Bath, BA2 2BZ

A four-bedroom detached house, on an impressive plot, with off-street parking and fabulous views. Located on a very quiet residential street, the house has been extended to the rear, creating a wonderful living/garden room with full-height patio doors opening to a terrace which overlooks the extensive garden.

ACCOMMODATION

sitting room
kitchen/dining room
Living/garden room with stunning views over the garden
utility room
four bedrooms
contemporary bathroom & shower room

EXTERNALLY

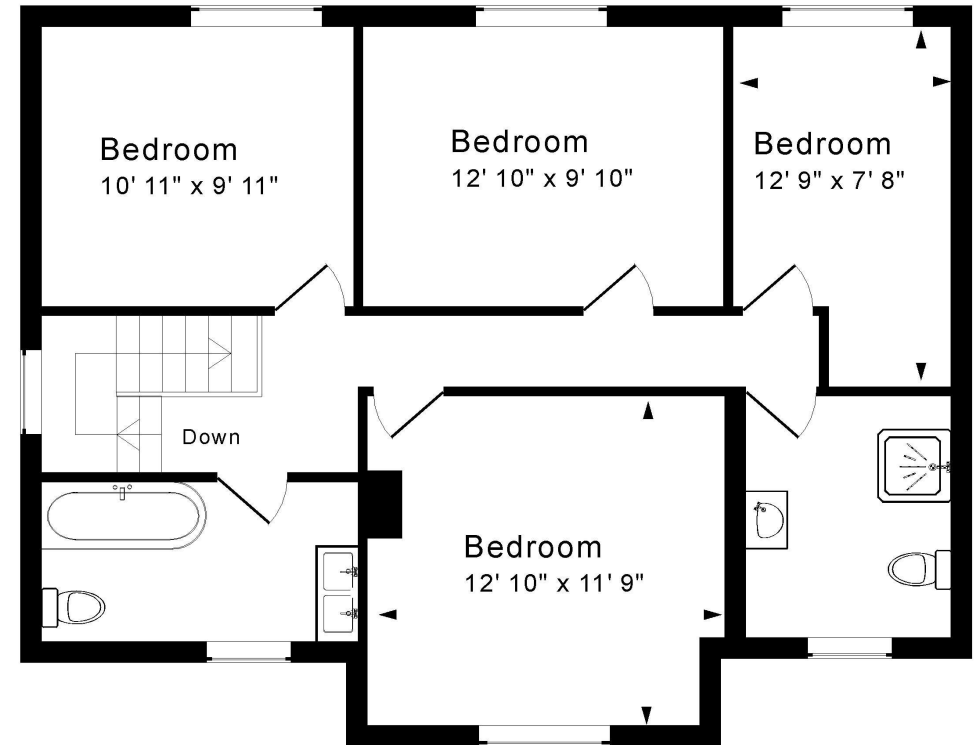
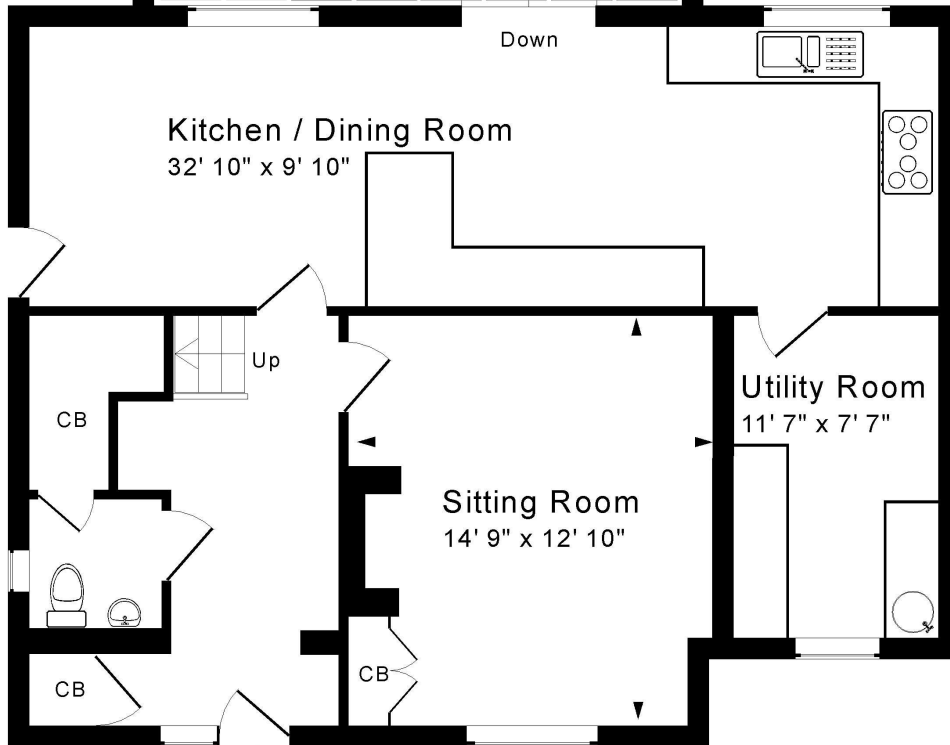
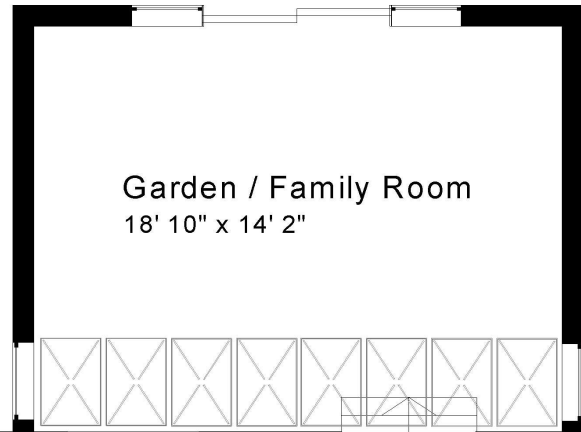
The private driveway opens to a parking area for a couple of cars, with lawned areas flanked by mature hedging to either side. From the living room, a deck provides the perfect spot from which to enjoy those marvellous views, with steps leading down to the 140' long enclosed garden. A further deck has created an outdoor seating area, from which a path winds through the garden past planted borders, shrubs and trees.

LOCATION

The house occupies a fantastic position in this extremely convenient and popular residential road. It is close to many excellent schools, Baskervilles Gym, a number of parks, the Two Tunnels Cycle Path and the wide range of shops and amenities both on Bear Flat and in Moorland Road. The house is also well served by a frequent bus service to Bath Spa Railway Station and the countless facilities in the city centre - just over a mile away.







Ground Floor

First Floor

Approx. Gross Internal Floor Area 1,795 Sq. Ft. / 167 Sq. M
Includes Conservatories. Excludes Garages, Porches etc. unless stated
For identification purposes only. Not to scale. Copyright Jemesis Ltd 2023
Drawing Number: 172-0669
18A Bloomfield Grove, Bath, BA2 2BZ.

Tenure: Freehold
Council Tax: 'F' £2,901.24

