

CURRANS
homes





WELCOME TO 3 BIRCHDALE

Welcome to 3 Birchdale Farm, a luxury two-bedroom semi-detached home located amidst the rolling greenery of Kingswood, Cheshire.



Set within a small luxury development, 3 Birchdale oozes luxury, with modern high-end appliances, spacious rooms and outlooks with incredible, far-reaching views.

Stepping inside, you are greeted by the spacious open plan living/dining/kitchen – with a sliding door onto the low maintenance courtyard flooding the room with natural light. The property is warmed with an air source heating system, and underfloor heating below the contemporary wood flooring that flows through the entire downstairs.

STYLE AND COMFORT

The kitchen is beautifully presented; a contemporary-country kitchen, with a range of wall, drawer and base units, complimented by bright quartz countertops and an island housing the induction hob and extractor.

Completing the ground floor accommodation is a w.c.



SPACE & LIGHT

At first floor there are two great sized bedrooms, both offering far-reaching views across open countryside. The primary bedroom with dual aspect windows and high vaulted ceilings. The second bedroom features an exposed timber beam.

Both bedrooms are complemented by a spacious family bathroom complete with a bathtub, overhead shower, vanity unit wash basin, and w.c.







LOCATION LOCATION LOCATION...

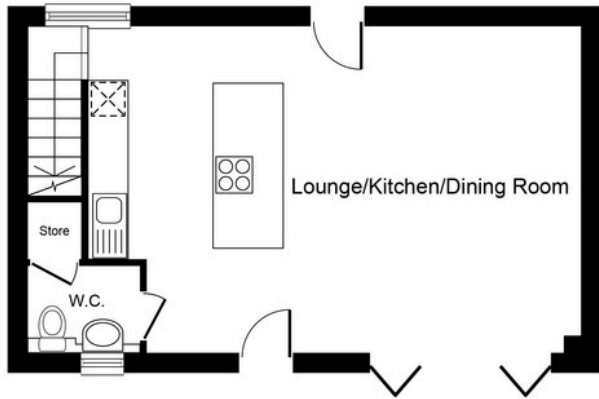
Ideally situated in the picturesque and sought-after setting of Kingswood, Birchdale arm is perfectly placed for those looking to experience the quiet calm and community spirit of Cheshire village life.

Within walking distance of delightful villages and towns, including Newton, Kingsley, and Manley, there is plenty to see and experience on the doorstep.

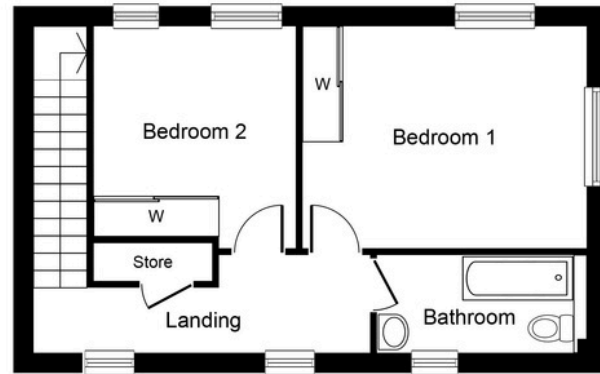
Walk into nearby Kingsley where you can pick up all your essentials in the local shop. After a day of exploring the footpaths and trails nearby, you can unwind with a refreshing drink at the Red Bull Inn, a welcoming country pub host to traditional events including the Spring Fair and the crowning of the May Queen.







Ground Floor



First Floor

Whilst every attempt has been made to ensure the accuracy of the floor plan contained here, measurements of doors, windows, rooms and any other items are approximate and no responsibility is taken for any error, omission, or mis-statement. The measurements should not be relied upon for valuation, transaction and/or funding purposes. This plan is for illustrative purposes only and should be used as such by any prospective purchaser or tenant. The services, systems and appliances shown have not been tested and no guarantee as to their operability or efficiency can be given.

Copyright V360 Ltd 2024 | www.houseviz.com



FINER DETAILS

- Surrounded by countryside
- Modern home
- Opulent & luxurious
- Incredible views
- Underfloor heating
- Freehold
- 10 minutes to Frodsham town
- 20 minutes to Chester city centre





BIRCHDALE FARM
FRODSHAM

presented by

CURRANS
homes



WHAT3WORDS: lilac.bliddful.breaks

To view Birchdale Farm
Call Matt
on 01244 313 900
Email: matt@curranshomes.co.uk

11 Grosvenor Street, Chester CH1 2DD
www.curransunique.co.uk