



## Charteris Road, Queens Park NW6

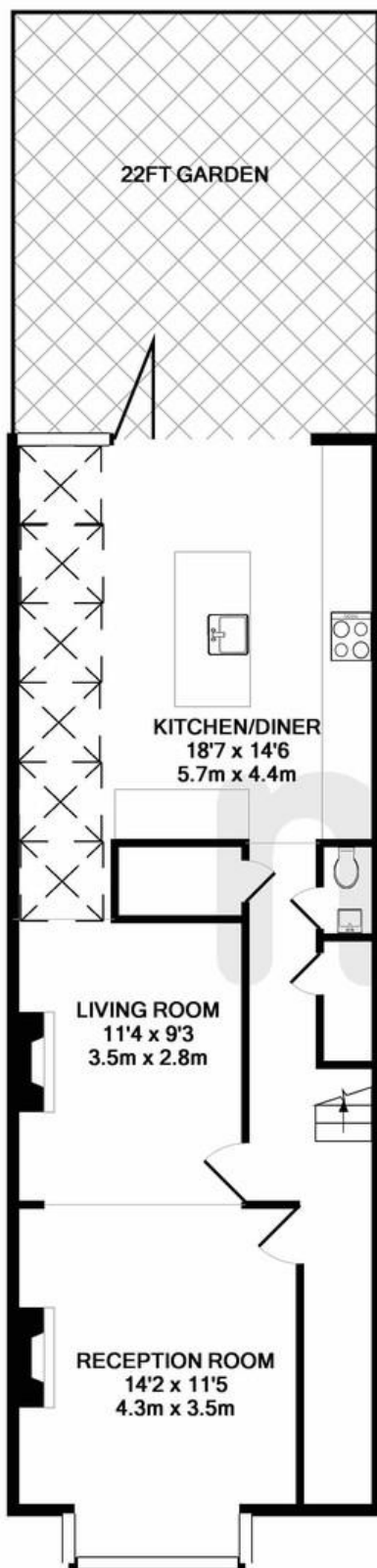
### £4,200 pcm

Welcome to this extended four-bedroom family home on Charteris Road. Offered in excellent condition and arranged over three floors.

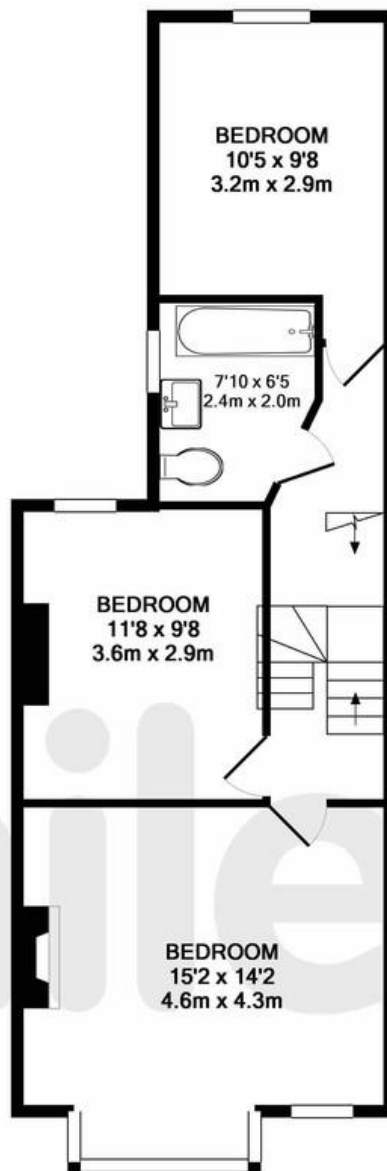
The property features a spacious double reception room, a contemporary kitchen/diner with bi-folding doors opening onto a south-facing garden, four double bedrooms, and two modern bathrooms, including an en-suite. Further benefits include a guest WC, ample storage, natural light throughout, and approximately 1,475 sq ft of living space.

Available furnished from March 2026 and ideally located close to Salusbury Road, Queen's Park, and excellent transport links.

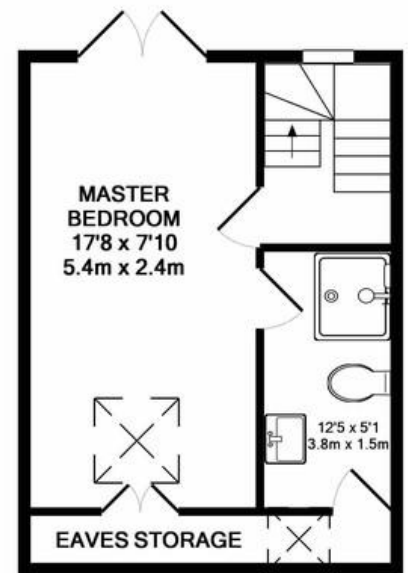
- Superb Victorian house
- Four double bedrooms
- 22ft south facing garden
- Excellent condition
- Available from March 2026
- Offered furnished
- Amazing 19ft kitchen / diner
- Two bathrooms (one en-suite)
- Fantastic location
- Close to shops and transports



GROUND FLOOR



1ST FLOOR



2ND FLOOR

TOTAL APPROX. FLOOR AREA 1478 SQ.FT. (137.3 SQ.M.)

Whilst every attempt has been made to ensure the accuracy of the floor plan contained here, measurements of doors, windows, rooms and any other items are approximate and no responsibility is taken for any error, omission, or mis-statement. This plan is for illustrative purposes only and should be used as such by any prospective purchaser. The services, systems and appliances shown have not been tested and no guarantee as to their operability or efficiency can be given

Made with Metropix ©2018

**MONEY LAUNDERING REGULATIONS 2003:** Intending purchasers will be asked to produce identification documentation at a later stage and we would ask for your co-operation in order that there will be no delay in agreeing the sale.

**General:** While we endeavour to make our sales particulars fair, accurate and reliable, they are only a general guide to the property and, accordingly, if there is any point which is of particular importance to you, please contact the office and we will be pleased to check the position for you, especially if you are contemplating travelling some distance to view the property.

**Measurements:** These approximate room sizes are only intended as general guidance. You must verify the dimensions carefully before ordering carpets or any built-in furniture.

**Services:** Please note we have not tested the services or any of the equipment or appliances in this property, accordingly we strongly advise prospective buyers to commission their own survey or service reports before finalising their offer to purchase.