



Oxford Gardens, London W10

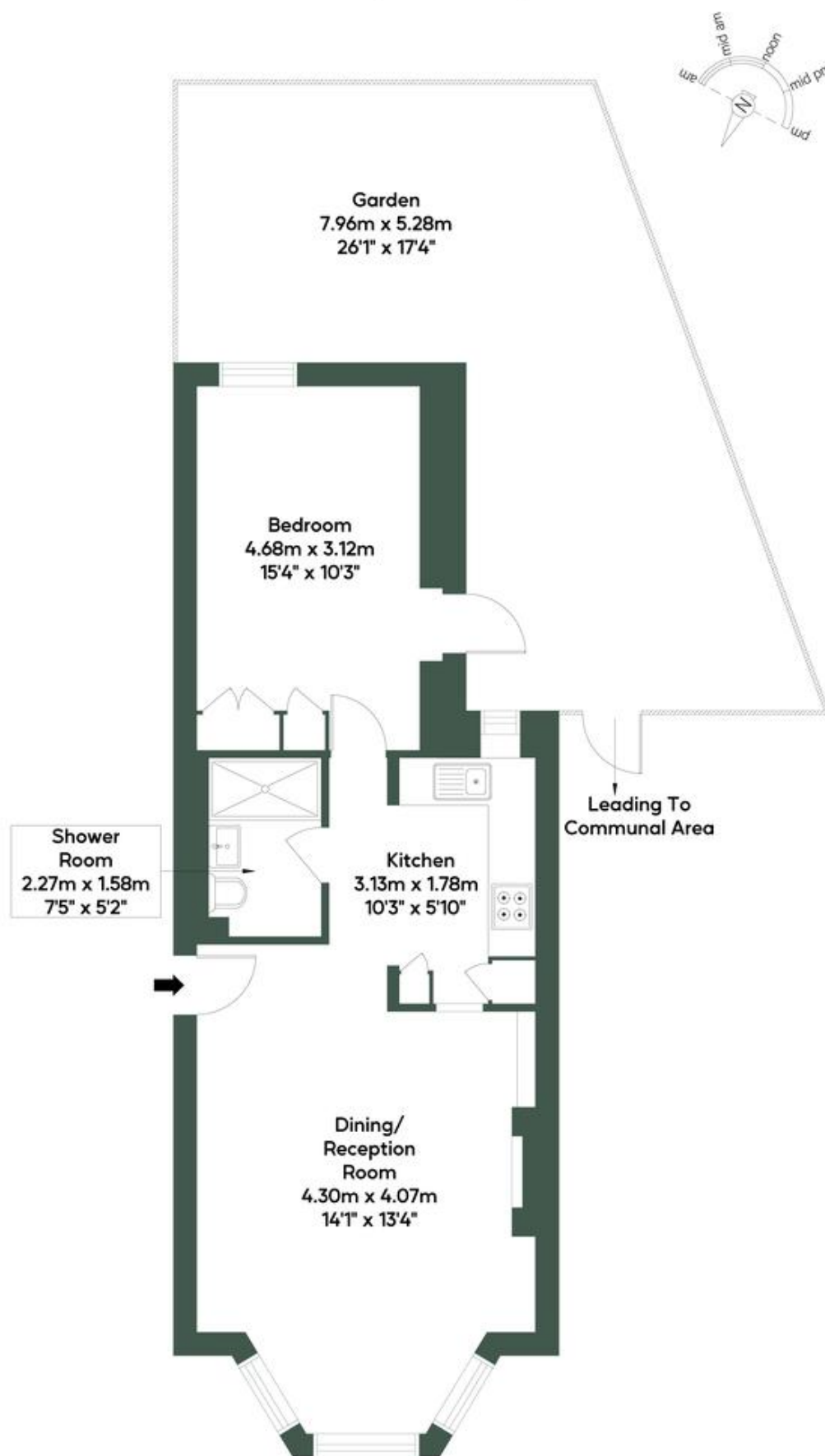
£620,000 Share of Freehold

Welcome to Oxford Gardens. A beautifully presented one-bedroom garden apartment with a share of freehold, offered in excellent condition throughout. The property boasts a bright and airy feel, complemented by a south-facing private garden — perfect for entertaining or quiet relaxation. Set within one of North Kensington's most desirable residential streets, Oxford Gardens is a tree-lined road renowned for its elegant period houses and strong community feel. The apartment is ideally located within walking distance of Ladbroke Grove Underground station (Circle and Hammersmith & City lines), providing swift links across London. The neighbourhood offers a fantastic lifestyle, with the vibrant Portobello Road and Golborne Road markets close by, alongside an eclectic mix of cafés, independent shops, and renowned restaurants. Green spaces such as Kensington Memorial Park and Holland Park are also within easy reach, adding to the appeal. This is a rare opportunity to secure a stylish home in W10, combining modern living with the charm and character of the area.

- Garden apartment
- Double bedroom
- Excellent condition
- Share of freehold
- Private south facing garden
- Great Location
- Own entrance
- Close to Portobello Road & Golborne Road markets
- Easy reach of Kensington Memorial Park and Holland Park
- Close to shops and transports

OXFORD GARDENS, W10

Approximate Gross Internal Area = 47.93 sq.m / 516 sq.ft



Lower Ground Floor

M MILE

MONEY LAUNDERING REGULATIONS 2003: Intending purchasers will be asked to produce identification documentation at a later stage and we would ask for your co-operation in order that there will be no delay in agreeing the sale.

General: While we endeavour to make our sales particulars fair, accurate and reliable, they are only a general guide to the property and, accordingly, if there is any point which is of particular importance to you, please contact the office and we will be pleased to check the position for you, especially if you are contemplating travelling some distance to view the property.

Measurements: These approximate room sizes are only intended as general guidance. You must verify the dimensions carefully before ordering carpets or any built-in furniture.

Services: Please note we have not tested the services or any of the equipment or appliances in this property, accordingly we strongly advise prospective buyers to commission their own survey or service reports before finalising their offer to purchase.