



Purves Road, Kensal Rise NW10

£700,000 Leasehold

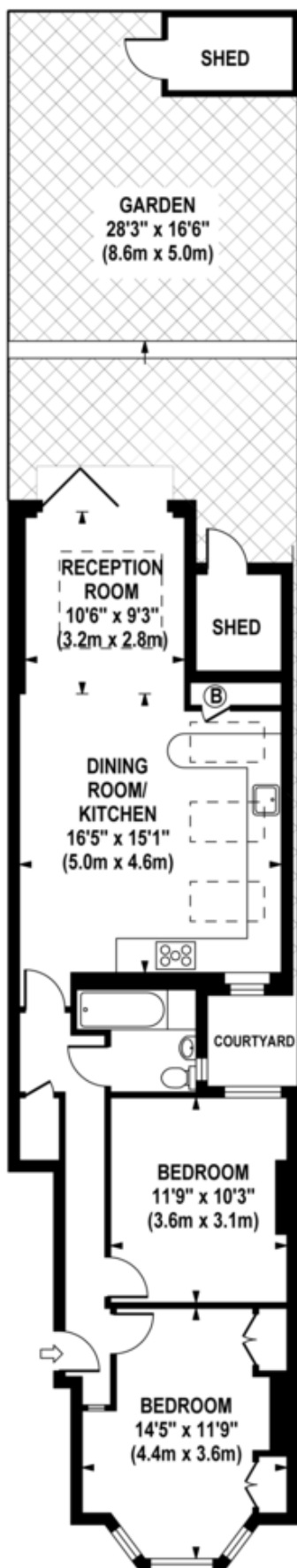
Set on a desirable residential street, this superb garden apartment offers generous living space, stylish finishes, and a fantastic south-facing garden. Featuring two double bedrooms and presented in great condition throughout, the property is offered chain-free and ready for immediate enjoyment.

One of the standout features is the impressive 27ft reception room with an open-plan eat-in kitchen, creating a perfect setting for both everyday living and entertaining. An abundance of natural light flows through the space, enhanced by beautiful wood sash double-glazed windows that add both charm and practicality.

- **Superb garden apartment**
- **Two double bedrooms**
- **Great 30ft south facing garden**
- **Great Condition**
- **Abundance of Natural Light**
- **Chain Free**
- **Amazing 27ft reception room / eat-in kitchen**
- **Wood sash double glazed windows**
- **Ideally located**
- **Close to shops and transports**

PURVES ROAD

Approximate Gross Internal Area 741 sq ft / 68.8 sq m
(Excluding Sheds)



GROUND FLOOR
GROSS INTERNAL
FLOOR AREA 741 SQ FT

MONEY LAUNDERING REGULATIONS 2003: Intending purchasers will be asked to produce identification documentation at a later stage and we would ask for your co-operation in order that there will be no delay in agreeing the sale.

General: While we endeavour to make our sales particulars fair, accurate and reliable, they are only a general guide to the property and, accordingly, if there is any point which is of particular importance to you, please contact the office and we will be pleased to check the position for you, especially if you are contemplating travelling some distance to view the property.

Measurements: These approximate room sizes are only intended as general guidance. You must verify the dimensions carefully before ordering carpets or any built-in furniture.

Services: Please note we have not tested the services or any of the equipment or appliances in this property, accordingly we strongly advise prospective buyers to commission their own survey or service reports before finalising their offer to purchase.