

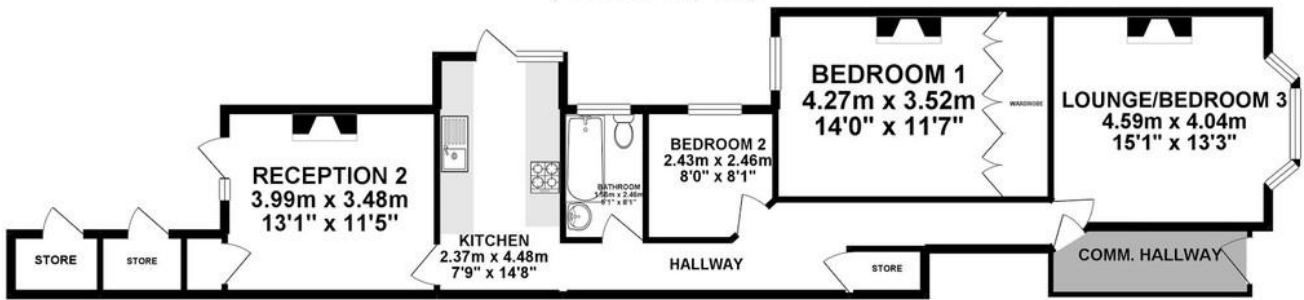


Ridley Road, London NW10
£2,600 pcm %tenure%

Mile are delighted to bring to the market this great garden apartment set on this tree lined residential road

- Leafy garden flat
- Three/Two bedrooms
- Large private garden
- Separate dining area
- Available August 2025!
- Unfurnished
- 925 sq ft of living space
- Viewing recommended
- Good condition
- Close to shops and transport

GROUND FLOOR 85.99 sq. m.
(925.59 sq. ft.)



TOTAL FLOOR AREA : 85.99 sq. m. (925.59 sq. ft.) approx.

Whilst every attempt has been made to ensure the accuracy of the floorplan contained here, measurements of doors, windows, rooms and any other items are approximate and no responsibility is taken for any error, omission or mis-statement. This plan is for illustrative purposes only and should be used as such by any prospective purchaser. The services, systems and appliances shown have not been tested and no guarantee as to their operability or efficiency can be given.
Made with Metropix ©2019



MONEY LAUNDERING REGULATIONS 2003: Intending purchasers will be asked to produce identification documentation at a later stage and we would ask for your co-operation in order that there will be no delay in agreeing the sale.

General: While we endeavour to make our sales particulars fair, accurate and reliable, they are only a general guide to the property and, accordingly, if there is any point which is of particular importance to you, please contact the office and we will be pleased to check the position for you, especially if you are contemplating travelling some distance to view the property.

Measurements: These approximate room sizes are only intended as general guidance. You must verify the dimensions carefully before ordering carpets or any built-in furniture.

Services: Please note we have not tested the services or any of the equipment or appliances in this property, accordingly we strongly advise prospective buyers to commission their own survey or service reports before finalising their offer to purchase.