



Coles Green Road, London NW2

£1,350 pcm

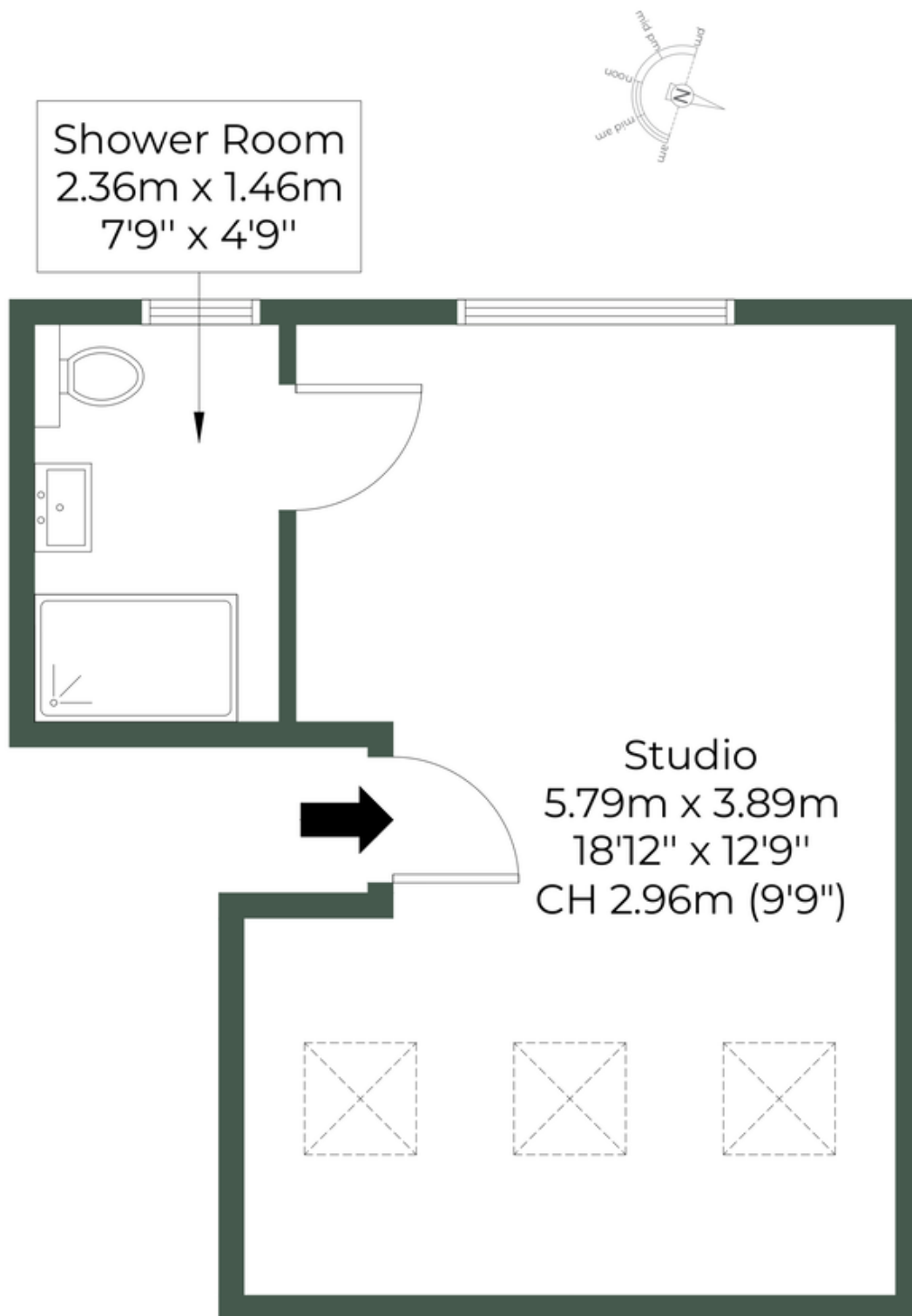
****Available now - All Bills Inclusive of rent! ****

Welcome to Coles Green Road; a selection of five stunning brand new units in shared accommodation with a huge landscaped communal garden and amenities for residents to enjoy in a quiet residential area!

- **Excellent Condition**
- **Brand New**
- **Good residential location**
- **All Bills Inclusive**
- **Bright and Airy**
- **Private Bathroom**
- **Communal Kitchen**
- **Huge Landscaped Communal Garden**
- **Work from home office space within working hours**
- **Close to shops and local amenities**

COLES GREEN ROAD, NW2 7ES

Approximate Gross Internal Area = 24.4 sq.m / 263 sq.ft



Second Floor

M MILE

MONEY LAUNDERING REGULATIONS 2003: Intending purchasers will be asked to produce identification documentation at a later stage and we would ask for your co-operation in order that there will be no delay in agreeing the sale.

General: While we endeavour to make our sales particulars fair, accurate and reliable, they are only a general guide to the property and, accordingly, if there is any point which is of particular importance to you, please contact the office and we will be pleased to check the position for you, especially if you are contemplating travelling some distance to view the property.

Measurements: These approximate room sizes are only intended as general guidance. You must verify the dimensions carefully before ordering carpets or any built-in furniture.

Services: Please note we have not tested the services or any of the equipment or appliances in this property, accordingly we strongly advise prospective buyers to commission their own survey or service reports before finalising their offer to purchase.