

Leighton Gardens, Kensal Rise NW10

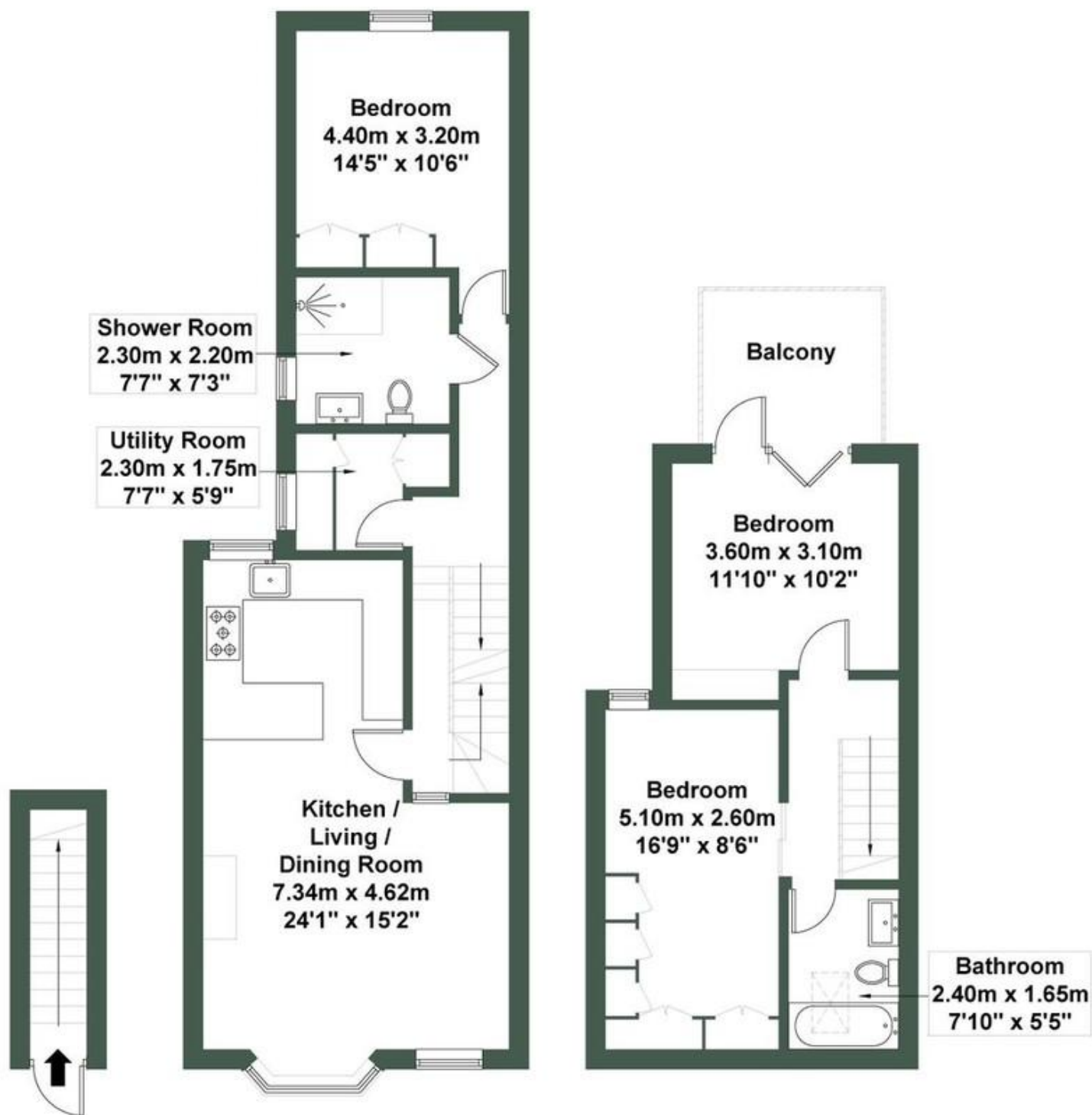
£925,000 Share of Freehold

Welcome to Leighton Gardens, a stunning split-level apartment set on one of Kensal Rise's most desirable tree-lined streets. Perfectly balanced between accessibility and tranquillity, this exceptional home is within easy walking distance of excellent transport links, vibrant high streets, and peaceful local parks, yet tucked away enough to enjoy the serene charm of this quiet residential enclave. Meticulously refurbished to the highest standard, the apartment boasts an elegant design throughout, with every detail thoughtfully considered and entirely brand new. Three generously proportioned double bedrooms provide comfortable and flexible living, while the show-stopping open-plan kitchen and living area offers a seamless space for entertaining and relaxation. The bathroom is a sanctuary of luxury, adorned with Mandarin Stone tiles and Lusso sanitary ware, creating a refined and contemporary feel. Adding to the appeal, a private roof terrace offers a perfect retreat for outdoor enjoyment and alfresco living. Offered chain-free with a share of the freehold, this 1,036 sq ft home presents a rare opportunity to secure a sophisticated, move-in-ready apartment in one of Kensal Rise's most coveted locations.

- Split level apartment
- Newly refurbished
- Three bedrooms
- Chain free
- Roof terrace
- High spec
- Open-plan kitchen / living
- Two bathrooms
- Quiet residential road
- Close to shops and transport

Leighton Road, London, NW10

Approximate Gross Internal Area = 96.3 sq m / 1036 sq ft



MONEY LAUNDERING REGULATIONS 2003: Intending purchasers will be asked to produce identification documentation at a later stage and we would ask for your co-operation in order that there will be no delay in agreeing the sale.

General: While we endeavour to make our sales particulars fair, accurate and reliable, they are only a general guide to the property and, accordingly, if there is any point which is of particular importance to you, please contact the office and we will be pleased to check the position for you, especially if you are contemplating travelling some distance to view the property.

Measurements: These approximate room sizes are only intended as general guidance. You must verify the dimensions carefully before ordering carpets or any built-in furniture.

Services: Please note we have not tested the services or any of the equipment or appliances in this property, accordingly we strongly advise prospective buyers to commission their own survey or service reports before finalising their offer to purchase.