



Tubbs Road, London NW10

£305,000 Leasehold

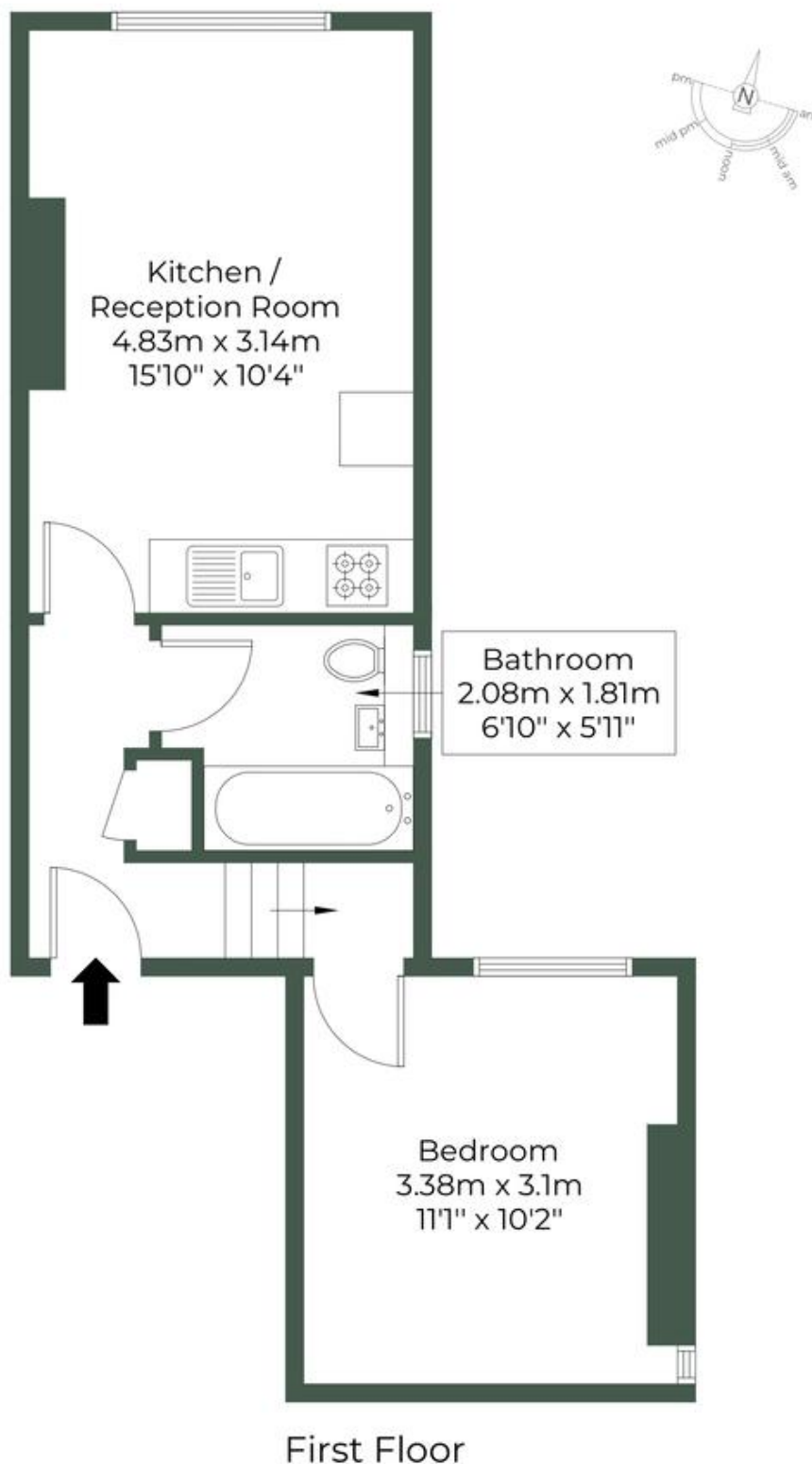
This generously proportioned one-bedroom apartment offers a fantastic opportunity to own a spacious and well-maintained home in a sought-after location. Bright and airy throughout, the property benefits from an open-plan kitchen and living area, creating a welcoming space perfect for both relaxation and entertaining.

Situated just minutes' walk from Willesden Junction Overground, the apartment enjoys excellent transport links, making commuting and city access incredibly convenient. The surrounding area offers a vibrant selection of local shops and amenities, providing everything you need right on your doorstep.

- One Bedroom
- Minutes walk from Willesden Junction Overground
- Good transport links
- Open Plan kitchen/living
- Bright and airy
- Close to local shops and amenities
- Spacious
- Good condition
- Leasehold
- Generously proportioned

TUBBS ROAD, NW10 4RE

Approximate Gross Internal Area = 35.2 sq.m / 379 sq.ft



M MILE

MONEY LAUNDERING REGULATIONS 2003: Intending purchasers will be asked to produce identification documentation at a later stage and we would ask for your co-operation in order that there will be no delay in agreeing the sale.

General: While we endeavour to make our sales particulars fair, accurate and reliable, they are only a general guide to the property and, accordingly, if there is any point which is of particular importance to you, please contact the office and we will be pleased to check the position for you, especially if you are contemplating travelling some distance to view the property.

Measurements: These approximate room sizes are only intended as general guidance. You must verify the dimensions carefully before ordering carpets or any built-in furniture.

Services: Please note we have not tested the services or any of the equipment or appliances in this property, accordingly we strongly advise prospective buyers to commission their own survey or service reports before finalising their offer to purchase.