



Harrow Road, London W10

£415,000 Leasehold

Welcome to this generously proportioned split-level apartment, offering two double bedrooms and an abundance of natural light. Located in the prestigious Westminster Borough, this home boasts picturesque views of the canal and a prime position close to local shops and amenities.

The property features a spacious layout, ideal for creating your dream home. While in need of modernisation, this apartment presents an exciting opportunity to personalize and add value. Its split-level design adds character and separates the living and sleeping areas for enhanced privacy and comfort

- Two double bedrooms
- Abundance of Natural Light
- Spacious
- In need of modernisation
- Leasehold
- Views of the canal
- Split Level
- Apartment
- Westminster Borough
- Close to local shops and amenities

HARROW ROAD, W10 4RG

Approximate Gross Internal Area = 77.2 sq.m / 831 sq.ft

Restricted head height / Eaves = 11.1 sq.m / 119 sq.ft

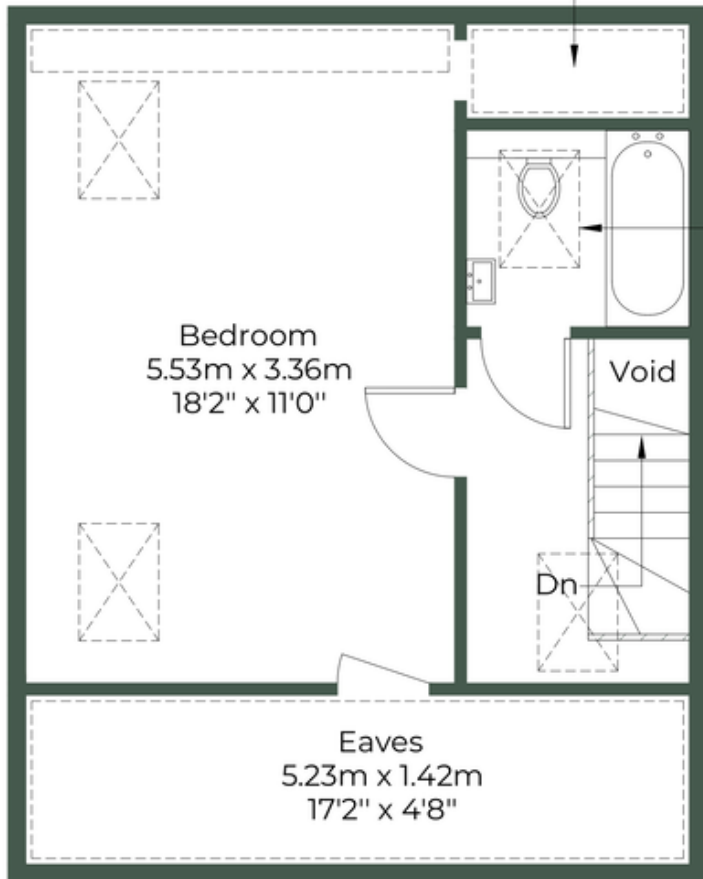
Total = 88.3 sq.m / 950 sq.ft



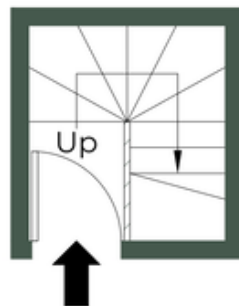
Eaves
1.87m x 0.79m
6'2" x 2'7"



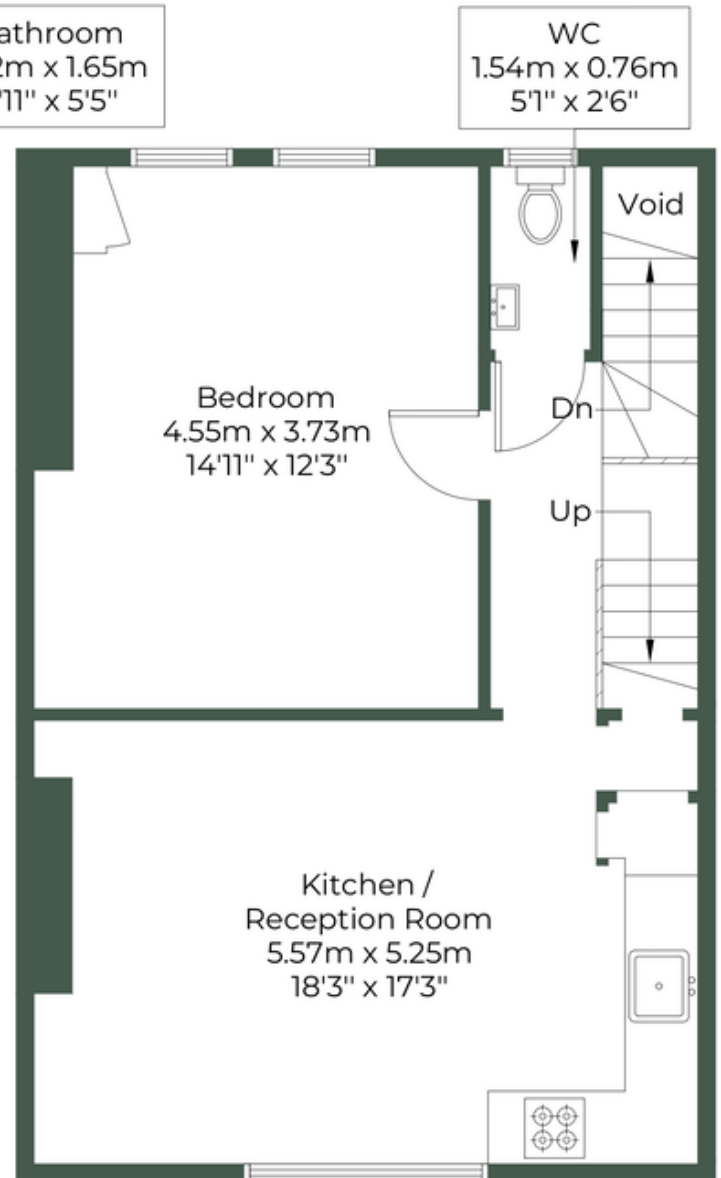
= Reduced headroom below 1.5m / 5'0"



Third Floor



First Floor



Second Floor



MONEY LAUNDERING REGULATIONS 2003: Intending purchasers will be asked to produce identification documentation at a later stage and we would ask for your co-operation in order that there will be no delay in agreeing the sale.

General: While we endeavour to make our sales particulars fair, accurate and reliable, they are only a general guide to the property and, accordingly, if there is any point which is of particular importance to you, please contact the office and we will be pleased to check the position for you, especially if you are contemplating travelling some distance to view the property.

Measurements: These approximate room sizes are only intended as general guidance. You must verify the dimensions carefully before ordering carpets or any built-in furniture.

Services: Please note we have not tested the services or any of the equipment or appliances in this property, accordingly we strongly advise prospective buyers to commission their own survey or service reports before finalising their offer to purchase.