



MILE



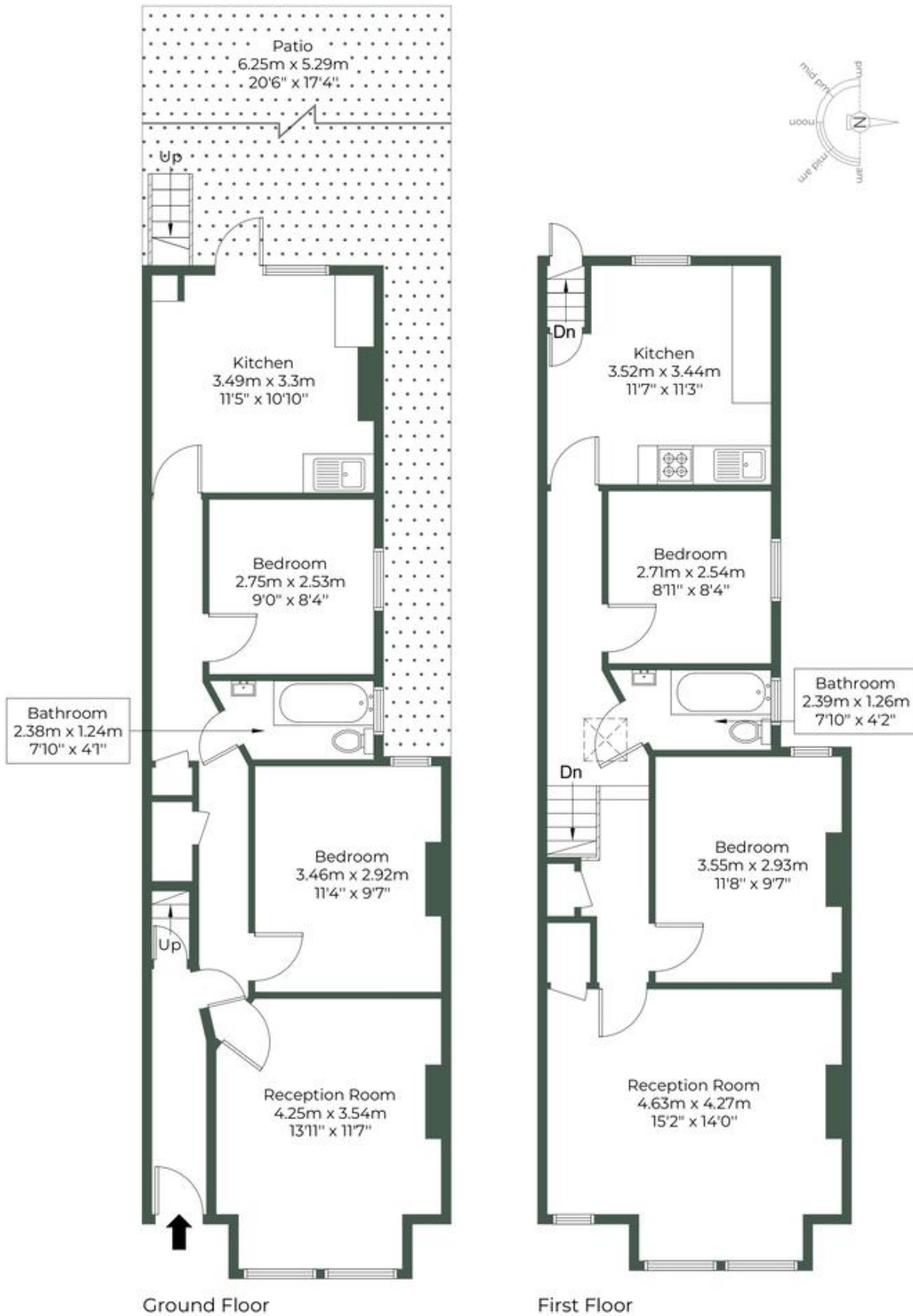
Grange Road, London NW10 £840,000 Freehold

Welcome to Grange Road, an attractive freehold, chain-free property that offers versatility and potential. Set up as two separate flats, this 1,329 sq ft home requires modernisation, providing a unique opportunity to tailor it to your preferences. The first floor comprises two bedrooms, a spacious reception room with bay windows, a bathroom, and a kitchen diner with garden access. The ground floor mirrors this layout, enhancing the flexibility for dual-family living or integration into a four-bedroom residence. Situated in NW10, Grange Road is well-connected. Residents benefit from proximity to Willesden Green and Dollis Hill stations (Jubilee Line), and Kensal Rise (Over ground), along with several bus routes, ensuring easy access to central London and beyond. The area also boasts nearby green spaces such as Roundwood Park and is within reach of the amenities in Willesden Green and Kensal Rise

- Period property
- Chain free
- Freehold
- Modernisation required
- Set up as two flats
- 1329 sq ft
- Potential to extend (STPP)
- Private garden
- Quiet residential road
- Close to shops and transport

GRANGE ROAD, NW10 2QU

Approximate Gross Internal Area = 123.5 sq.m / 1329 sq.ft



MONEY LAUNDERING REGULATIONS 2003: Intending purchasers will be asked to produce identification documentation at a later stage and we would ask for your co-operation in order that there will be no delay in agreeing the sale.

General: While we endeavour to make our sales particulars fair, accurate and reliable, they are only a general guide to the property and, accordingly, if there is any point which is of particular importance to you, please contact the office and we will be pleased to check the position for you, especially if you are contemplating travelling some distance to view the property.

Measurements: These approximate room sizes are only intended as general guidance. You must verify the dimensions carefully before ordering carpets or any built-in furniture.

Services: Please note we have not tested the services or any of the equipment or appliances in this property, accordingly we strongly advise prospective buyers to commission their own survey or service reports before finalising their offer to purchase.