



MILE



Chapter Road, London NW2

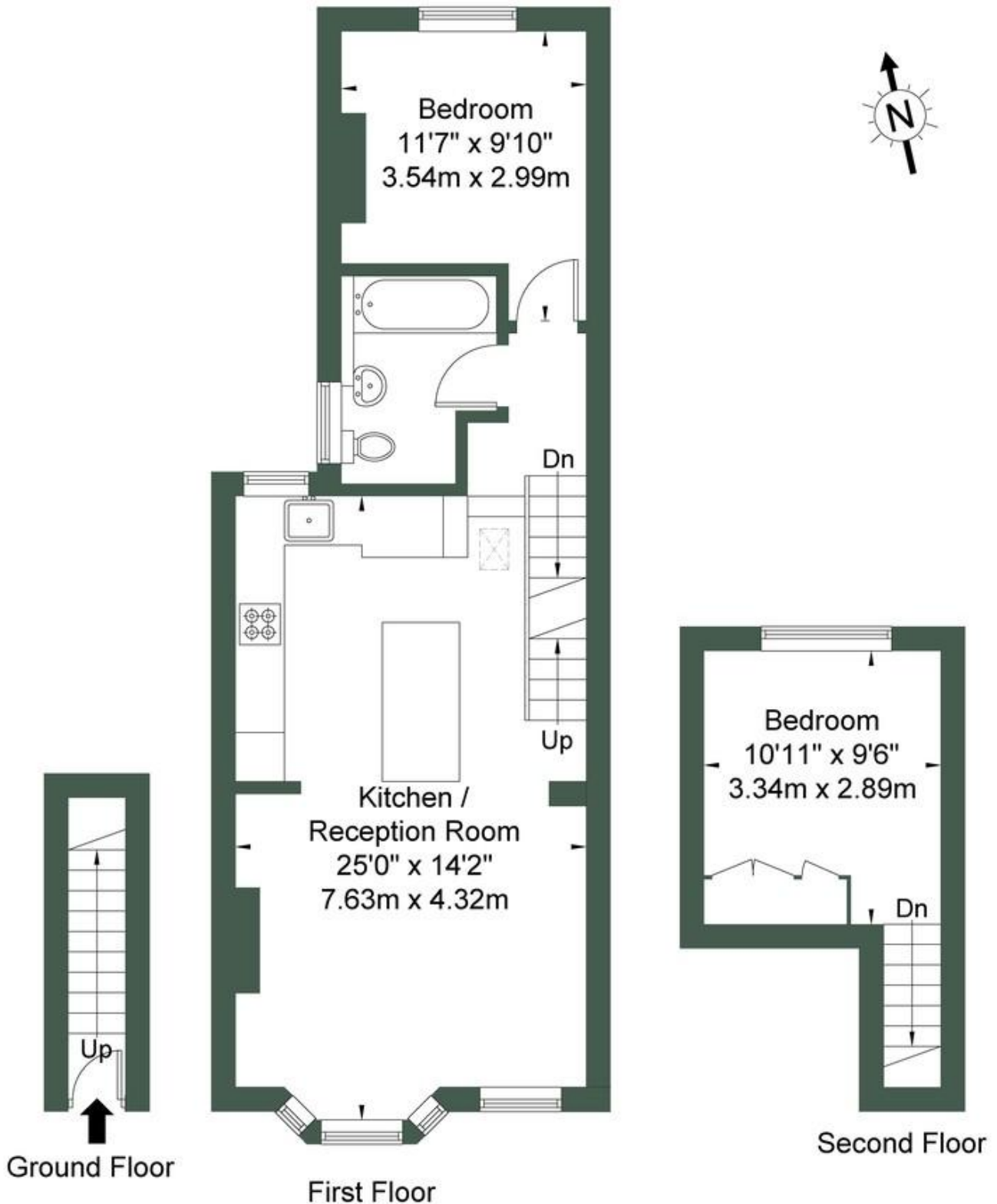
£499,950 Leasehold

Welcome to Chapter Road. Experience the charm of the street with this beautifully presented property, offered in excellent condition. Highlighted by a spacious 25ft reception room featuring a sleek, fully-fitted contemporary open-plan kitchen, the flat also boasts two generous double bedrooms and a stylish, modern three-piece bathroom. This inviting home comes with double-glazed windows, high ceilings, and elegant wooden floorboards throughout, complemented by cosy carpeted bedrooms. Ample storage and abundant natural light further enhance its appeal. The property is sold with an 88-year lease and is chain-free, ensuring a smooth transition for the new owner. Situated in an enviable location, Chapter Road provides easy access to the vibrant shops, bars, and restaurants of Walm Lane and Willesden High Road. Excellent transport links are available via Dollis Hill station (Jubilee line), and the beautiful open spaces of Roundwood Park and Gladstone Park are just moments away.

- Split level apartment
- Excellent condition
- Two bedrooms
- Stunning open kitchen plan living area
- Bright and airy
- Quiet residential road
- 671 sq ft
- 88 year lease
- Chain Free
- Close to shops and transport

Chapter Road NW2 5LU

Approx Gross Internal Area = 62.4 sq m / 671 sq ft



Ref

Copyright



The Floor plan is not to scale and measurements and areas shown are approximate and therefore should be used for illustrative purposes only. The plan has been prepared in accordance with the RICS code of Measuring Practice and whilst we have confidence in the information produced it must not be relied on. If there is any aspect of particular importance, you should

MONEY LAUNDERING REGULATIONS 2003: Intending purchasers will be asked to produce identification documentation at a later stage and we would ask for your co-operation in order that there will be no delay in agreeing the sale.

General: While we endeavour to make our sales particulars fair, accurate and reliable, they are only a general guide to the property and, accordingly, if there is any point which is of particular importance to you, please contact the office and we will be pleased to check the position for you, especially if you are contemplating travelling some distance to view the property.

Measurements: These approximate room sizes are only intended as general guidance. You must verify the dimensions carefully before ordering carpets or any built-in furniture.

Services: Please note we have not tested the services or any of the equipment or appliances in this property, accordingly we strongly advise prospective buyers to commission their own survey or service reports before finalising their offer to purchase.