



MILE



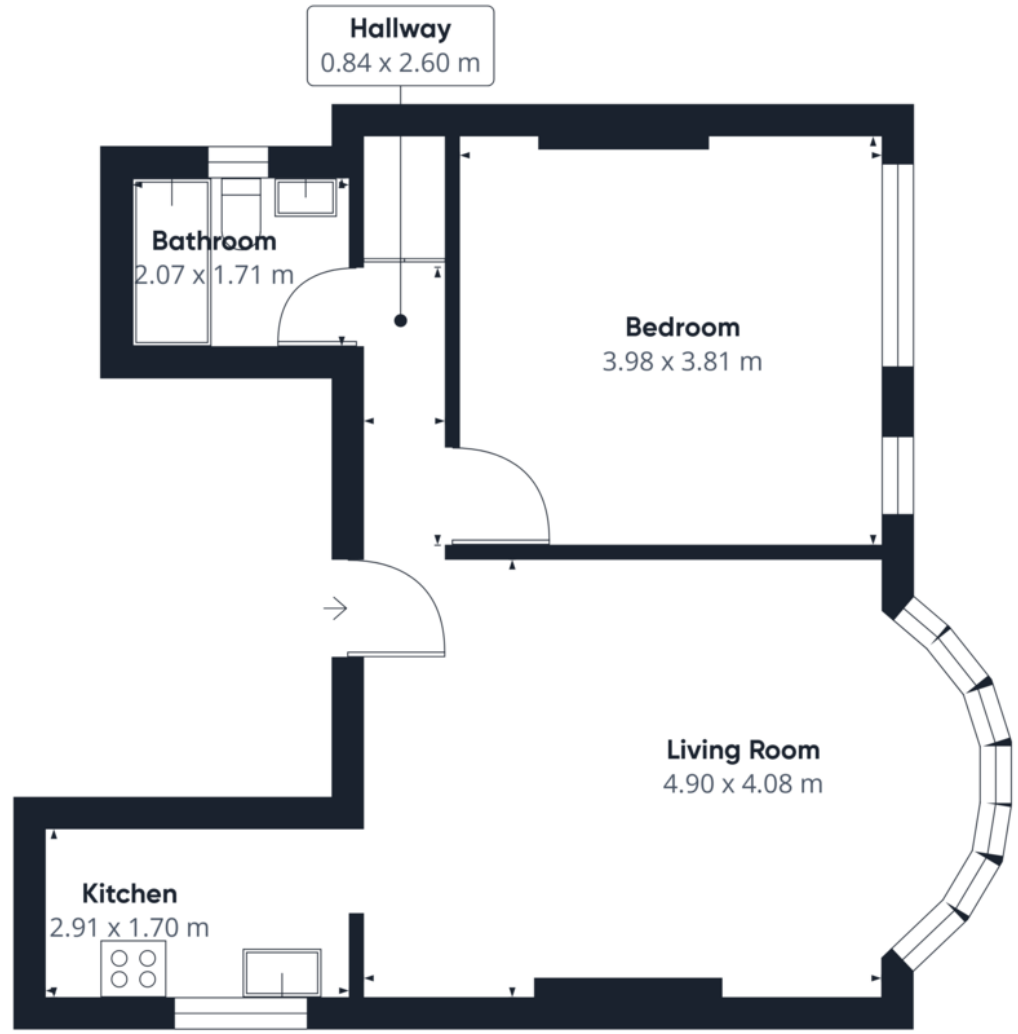
Westbere Road, London NW2

£455,000 Share of Freehold

Welcome to Westbere Road, charming and spacious one bedroom first floor flat in NW2! This property, larger than average and generously proportioned, offers an exceptional opportunity in a good location. Generously proportioned and a larger than average one bed in excellent condition, making it a rare find in the area.

The property's layout ensures that each room feels airy and substantial, providing plenty of space for relaxation, work, or entertaining with a spacious semi open plan kitchen living area. The large windows throughout the property flood the interior with natural light, enhancing the bright and welcoming atmosphere.

- Spacious
- Share of Freehold
- Good condition
- Excellent location
- Close to shops and local amenities
- Good transport links
- Well maintained
- First Floor Flat
- Communal outside space
- Off market



Approximate total area⁽¹⁾
49 m²

(1) Excluding balconies and terraces

While every attempt has been made to ensure accuracy, all measurements are approximate, not to scale. This floor plan is for illustrative purposes only.

GIRAFFE360

MONEY LAUNDERING REGULATIONS 2003: Intending purchasers will be asked to produce identification documentation at a later stage and we would ask for your co-operation in order that there will be no delay in agreeing the sale.

General: While we endeavour to make our sales particulars fair, accurate and reliable, they are only a general guide to the property and, accordingly, if there is any point which is of particular importance to you, please contact the office and we will be pleased to check the position for you, especially if you are contemplating travelling some distance to view the property.

Measurements: These approximate room sizes are only intended as general guidance. You must verify the dimensions carefully before ordering carpets or any built-in furniture.

Services: Please note we have not tested the services or any of the equipment or appliances in this property, accordingly we strongly advise prospective buyers to commission their own survey or service reports before finalising their offer to purchase.