



MILE



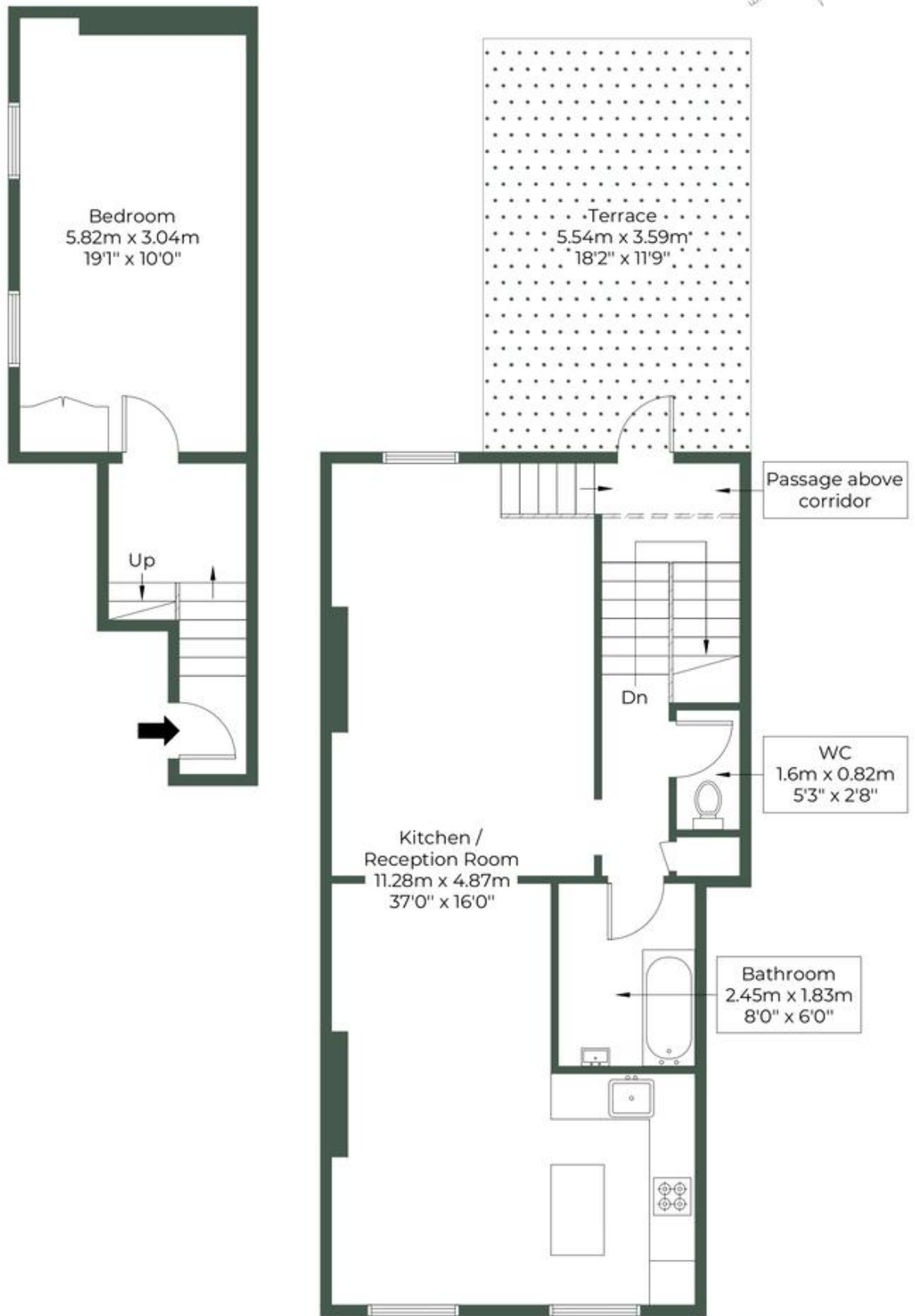
Haverstock Hill, London NW3 £725,000 Leasehold

Welcome to Haverstock Hill; beautiful one bedroom apartment with private roof terrace. This remarkable one-bedroom property in Belsize Park offers over 880 square feet of stylish and comfortable living space. Featuring a contemporary open-plan kitchen and living area, this home is perfect for those who love to entertain or enjoy a spacious environment. Offered chain-free, this property is ready for you to move in and make it your own. One of the standout features of this property is the amazing private roof terrace. This secluded outdoor space provides the perfect spot for relaxing, entertaining, or simply enjoying the stunning views of the surrounding area. Located in the highly desirable neighbourhood of Belsize Park, this home is situated in an area known for its charming streets, beautiful architecture, and vibrant community. With an abundance of cafes, restaurants, and shops nearby, as well as excellent transport links, you'll have everything you need right at your doorstep. The property has an 83-year lease, adding to its appeal as a great investment opportunity in this sought-after location.

- First floor apartment
- Period conversion
- Double bedroom
- 883 sq ft
- Chain free
- Leasehold
- Private roof terrace
- Good condition
- Great location
- Close to shops and transports

HAVERSTOCK HILL, NW3 4RL

Approximate Gross Internal Area = 82 sq.m / 883 sq.ft



MONEY LAUNDERING REGULATIONS 2003: Intending purchasers will be asked to produce identification documentation at a later stage and we would ask for your co-operation in order that there will be no delay in agreeing the sale.

General: While we endeavour to make our sales particulars fair, accurate and reliable, they are only a general guide to the property and, accordingly, if there is any point which is of particular importance to you, please contact the office and we will be pleased to check the position for you, especially if you are contemplating travelling some distance to view the property.

Measurements: These approximate room sizes are only intended as general guidance. You must verify the dimensions carefully before ordering carpets or any built-in furniture.

Services: Please note we have not tested the services or any of the equipment or appliances in this property, accordingly we strongly advise prospective buyers to commission their own survey or service reports before finalising their offer to purchase.