



MILE



Greyhound Road, London NW10

£625,000 Leasehold

Welcome to Greyhound Road. This stunning two-bedroom garden apartment has been fully extended to an incredible standard, offering a beautifully designed living space that combines comfort and style. Thoughtfully considered throughout, every detail has been meticulously crafted to ensure a seamless blend of functionality and elegance. Located on the desirable Greyhound Road in NW10, you'll enjoy the convenience of being just a short walk to Kensal Green station, with Kensal Rise station also within easy reach. The vibrant local area offers a fantastic selection of cafes, shops, and parks, making it an ideal location for both relaxation and city living. In fabulous condition, this leasehold property is sold chain free, allowing for a smooth and hassle-free purchase. With its exceptional finish, prime location, and no onward chain, this apartment is ready to welcome you home. Don't miss the opportunity to make it yours!

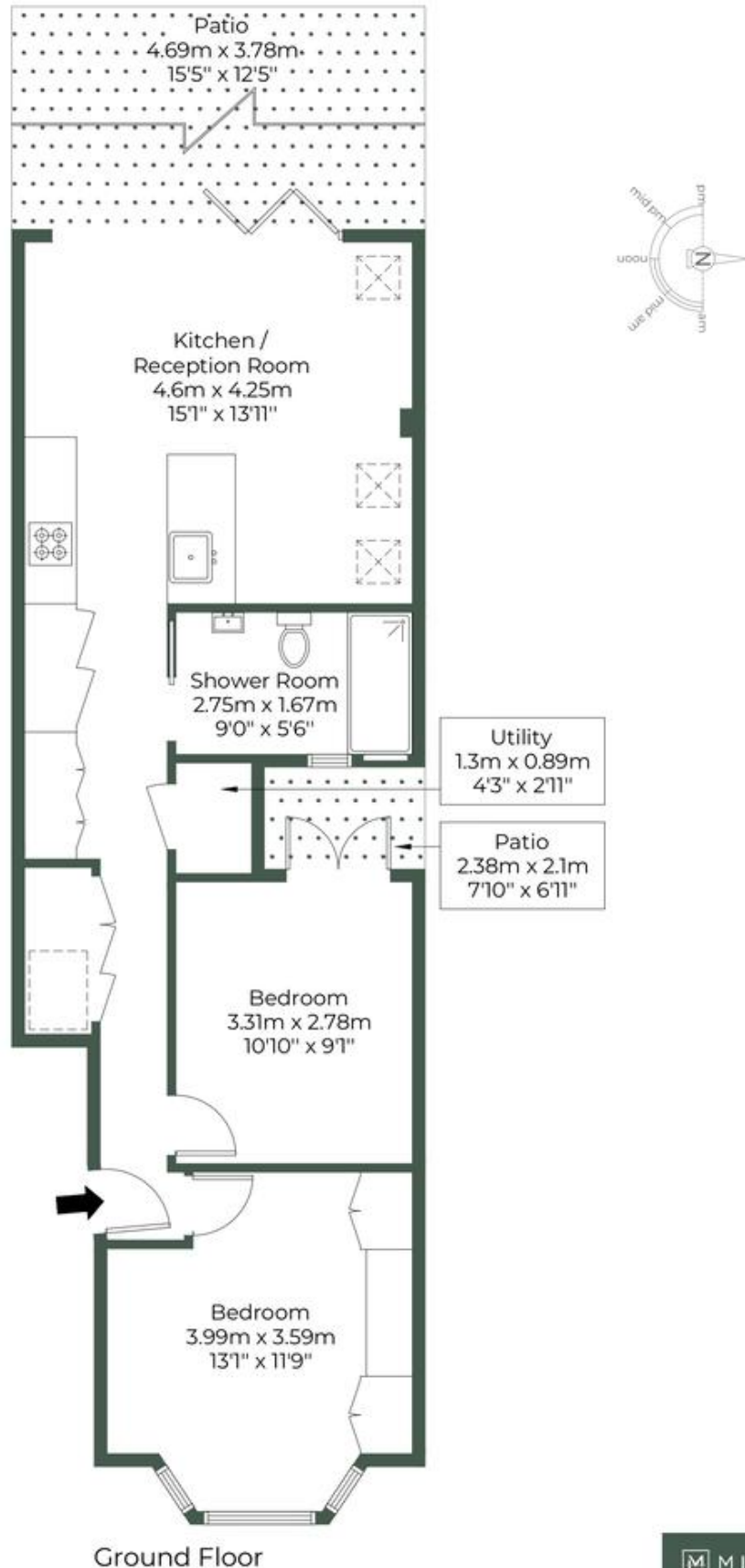
- Period conversion
- Two bedrooms
- Excellent condition
- Chain free
- Leasehold
- West facing garden
- Great location
- Quiet residential road
- Open plan kitchen living area
- Close to shops and transport

GREYHOUND ROAD, NW10 5QH

Approximate Gross Internal Area = 58.2 sq.m / 626 sq.ft

Restricted head height = 1 sq.m / 11 sq.ft

Total = 59.2 sq.m / 637 sq.ft



M MILE

MONEY LAUNDERING REGULATIONS 2003: Intending purchasers will be asked to produce identification documentation at a later stage and we would ask for your co-operation in order that there will be no delay in agreeing the sale.

General: While we endeavour to make our sales particulars fair, accurate and reliable, they are only a general guide to the property and, accordingly, if there is any point which is of particular importance to you, please contact the office and we will be pleased to check the position for you, especially if you are contemplating travelling some distance to view the property.

Measurements: These approximate room sizes are only intended as general guidance. You must verify the dimensions carefully before ordering carpets or any built-in furniture.

Services: Please note we have not tested the services or any of the equipment or appliances in this property, accordingly we strongly advise prospective buyers to commission their own survey or service reports before finalising their offer to purchase.