



MILE



Minet Avenue, London NW10
£2,450 pcm

Mile are pleased to bring you this three bed flat to rent on this quiet residential road.

- Victorian conversion
- First floor apartment
- Part furnished
- Recently refurbished
- Available now
- Hardwood flooring throughout
- Quiet residential road
- Short walk to transport links
- Three bedrooms
- Close to shops and restaurants

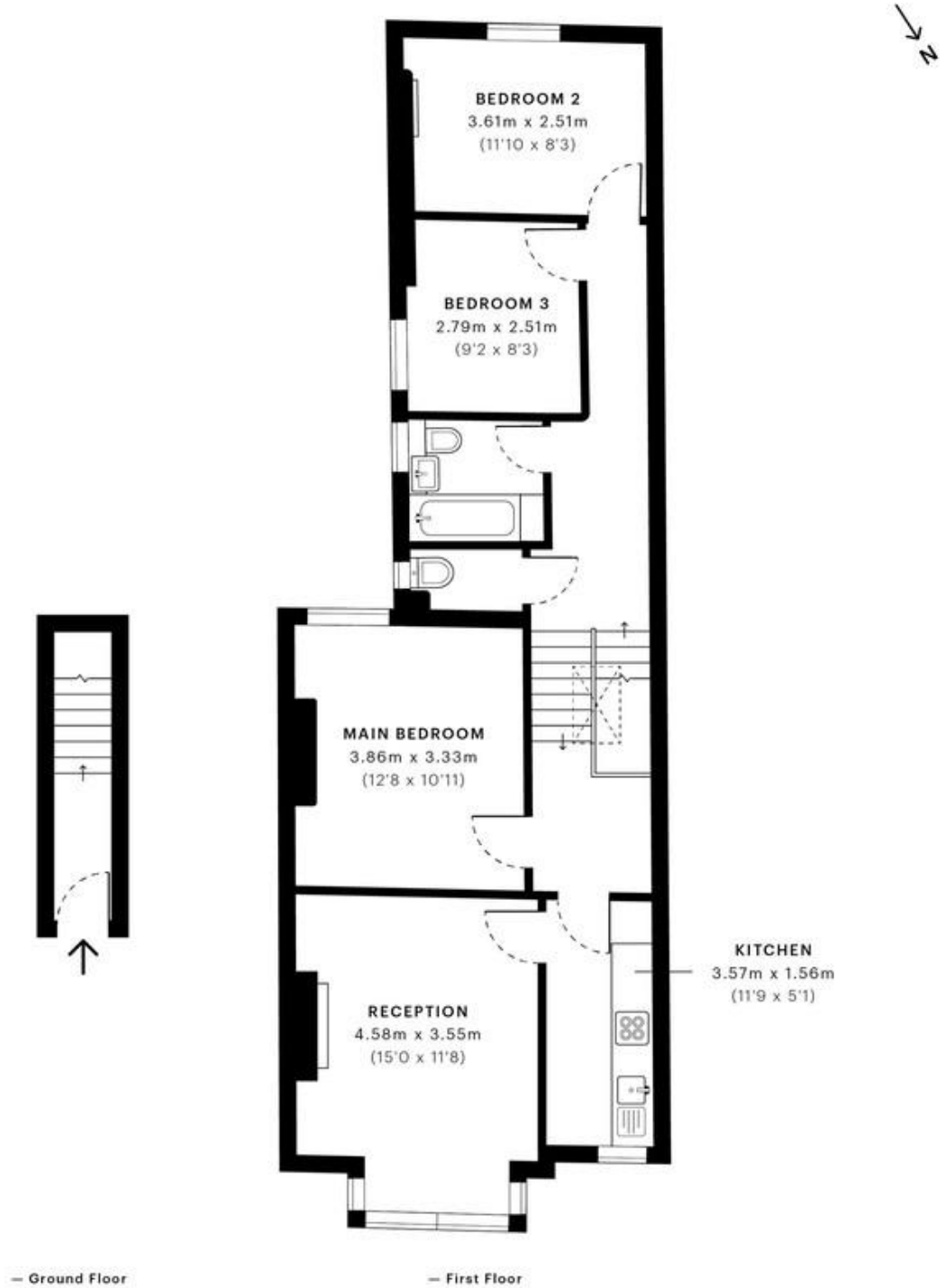


Minet Avenue, NW10

CAPTURE DATE 17/08/2022 LASER SCAN POINTS 47,521,237

GROSS INTERNAL AREA

75.17 sqm / 809.12 sqft



GROSS INTERNAL AREA (GIA)
The footprint of the property
75.17 sqm / 809.12 sqft

NET INTERNAL AREA (NIA)
Excludes walls and external features
Includes washrooms, restricted head height
68.32 sqm / 735.39 sqft

EXTERNAL STRUCTURAL FEATURES
Balconies, terraces, verandas etc.
0.00 sqm / 0.00 sqft

RESTRICTED HEAD HEIGHT
Limited use area under 1.5 m
0.00 sqm / 0.00 sqft

Spec Verified floor plans are produced in accordance with

IPMS 3B RESIDENTIAL 73.24 sqm / 788.35 sqft

MONEY LAUNDERING REGULATIONS 2003: Intending purchasers will be asked to produce identification documentation at a later stage and we would ask for your co-operation in order that there will be no delay in agreeing the sale.

General: While we endeavour to make our sales particulars fair, accurate and reliable, they are only a general guide to the property and, accordingly, if there is any point which is of particular importance to you, please contact the office and we will be pleased to check the position for you, especially if you are contemplating travelling some distance to view the property.

Measurements: These approximate room sizes are only intended as general guidance. You must verify the dimensions carefully before ordering carpets or any built-in furniture.

Services: Please note we have not tested the services or any of the equipment or appliances in this property, accordingly we strongly advise prospective buyers to commission their own survey or service reports before finalising their offer to purchase.