



MILE



Linden Avenue, Kensal Rise NW10 £875,000 Leasehold

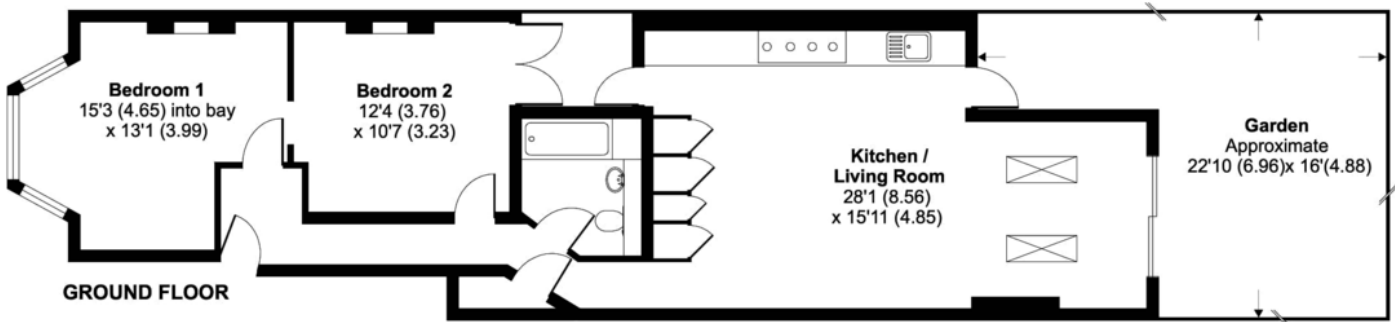
Welcome to Linden Avenue. Discover this incredible two-bedroom garden apartment nestled in the heart of Kensal Rise. Perfectly positioned for effortless city living, this architecturally designed home offers excellent access to the Bakerloo line, the Overground, and numerous bus routes, ensuring you're well-connected to all that London has to offer. Take a leisurely stroll to nearby Queen's Park, a beautiful green space for relaxation and recreation. This apartment boasts an easterly facing private garden, ideal for morning coffees and summer gatherings. Inside, you'll find two spacious double bedrooms, providing ample room for comfortable living. Located on a well-regarded street, this property benefits from a long lease and can be offered chain-free, making your move smooth and straightforward. Don't miss the chance to make this stunning garden apartment your new home.

- Garden apartment
- Two double bedrooms
- 22ft low maintenance garden
- Chain free
- Period Property
- Fantastic condition
- Prime location
- Long Lease
- Close to shops and transports
- Architecturally designed

Linden Avenue, London, NW10

Approximate Area = 876 sq ft / 81.4 sq m

For identification only - Not to scale



Floor plan produced in accordance with RICS Property Measurement Standards incorporating International Property Measurement Standards (IPMS2 Residential). © nichecom 2020. Produced for Movewise. REF: 588550

MONEY LAUNDERING REGULATIONS 2003: Intending purchasers will be asked to produce identification documentation at a later stage and we would ask for your co-operation in order that there will be no delay in agreeing the sale.

General: While we endeavour to make our sales particulars fair, accurate and reliable, they are only a general guide to the property and, accordingly, if there is any point which is of particular importance to you, please contact the office and we will be pleased to check the position for you, especially if you are contemplating travelling some distance to view the property.

Measurements: These approximate room sizes are only intended as general guidance. You must verify the dimensions carefully before ordering carpets or any built-in furniture.

Services: Please note we have not tested the services or any of the equipment or appliances in this property, accordingly we strongly advise prospective buyers to commission their own survey or service reports before finalising their offer to purchase.