



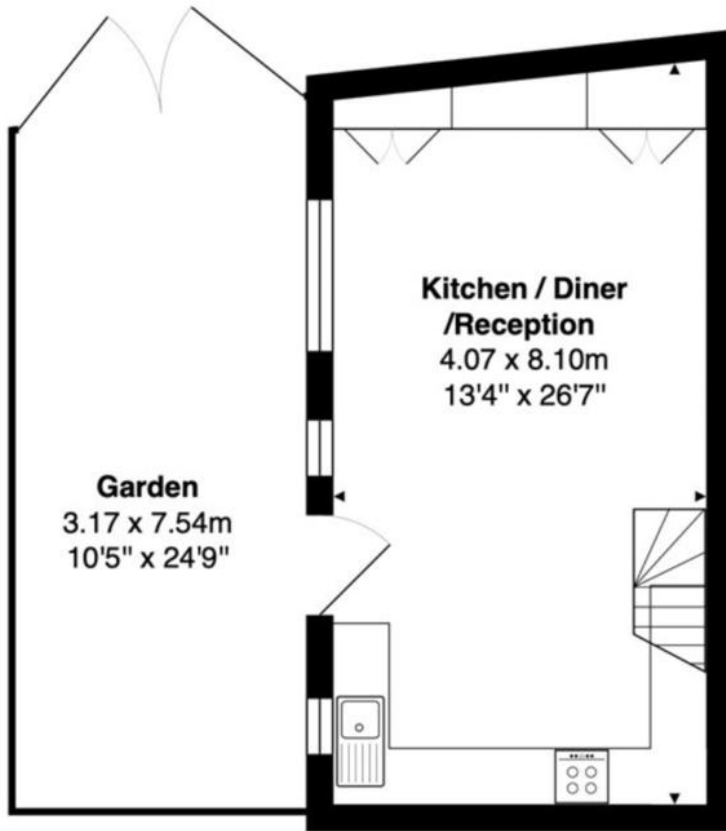
MILE



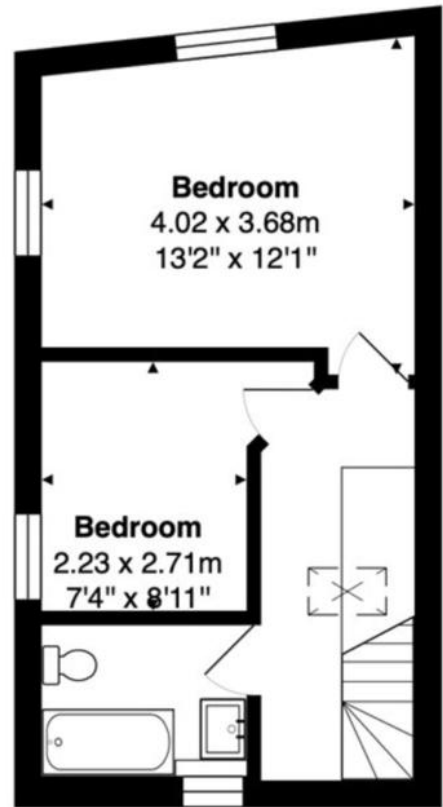
Ashdon Road, London NW10
£2,300 pcm

Mile are delighted to bring to market this truly unique converted former coach house to let

- Converted coach house
- Two bedroom terraced house
- Private courtyard
- Excellent condition
- Juliet balcony from master bedroom
- Many original features
- Unique opportunity
- Short walk to open green space of roundwood park
- Available Now!
- Close to shops and restaurants



Ground Floor



1st Floor

Total Area: 64.0 m² ... 689 ft² (excluding garden)

All measurements are approximate and for display purposes only

MONEY LAUNDERING REGULATIONS 2003: Intending purchasers will be asked to produce identification documentation at a later stage and we would ask for your co-operation in order that there will be no delay in agreeing the sale.

General: While we endeavour to make our sales particulars fair, accurate and reliable, they are only a general guide to the property and, accordingly, if there is any point which is of particular importance to you, please contact the office and we will be pleased to check the position for you, especially if you are contemplating travelling some distance to view the property.

Measurements: These approximate room sizes are only intended as general guidance. You must verify the dimensions carefully before ordering carpets or any built-in furniture.

Services: Please note we have not tested the services or any of the equipment or appliances in this property, accordingly we strongly advise prospective buyers to commission their own survey or service reports before finalising their offer to purchase.