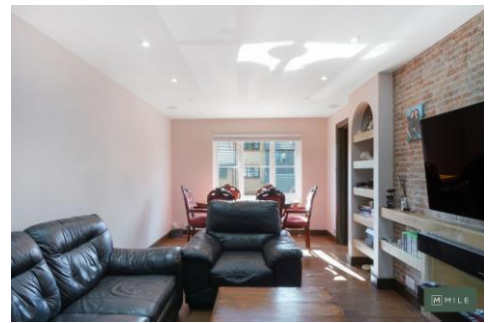




MILE



Kingfisher Way, London NW10

£2,500 pcm

Recently renovated, the home features contemporary finishes and state-of-the-art fixtures, making it move-in ready for the discerning buyer. Additionally, the property offers underfloor heating throughout, ensuring warmth and coziness during the colder months.

Convenient parking space is available, providing secure and easy access for residents and guests alike. Large windows and an open layout allow for an abundance of natural light, creating a bright and inviting atmosphere in every room.

The home is equipped with a phone-controlled app for utilities, allowing for convenient and efficient management of household systems. Situated close to the A406/North Circular, the location offers excellent connectivity and easy access to major roads.

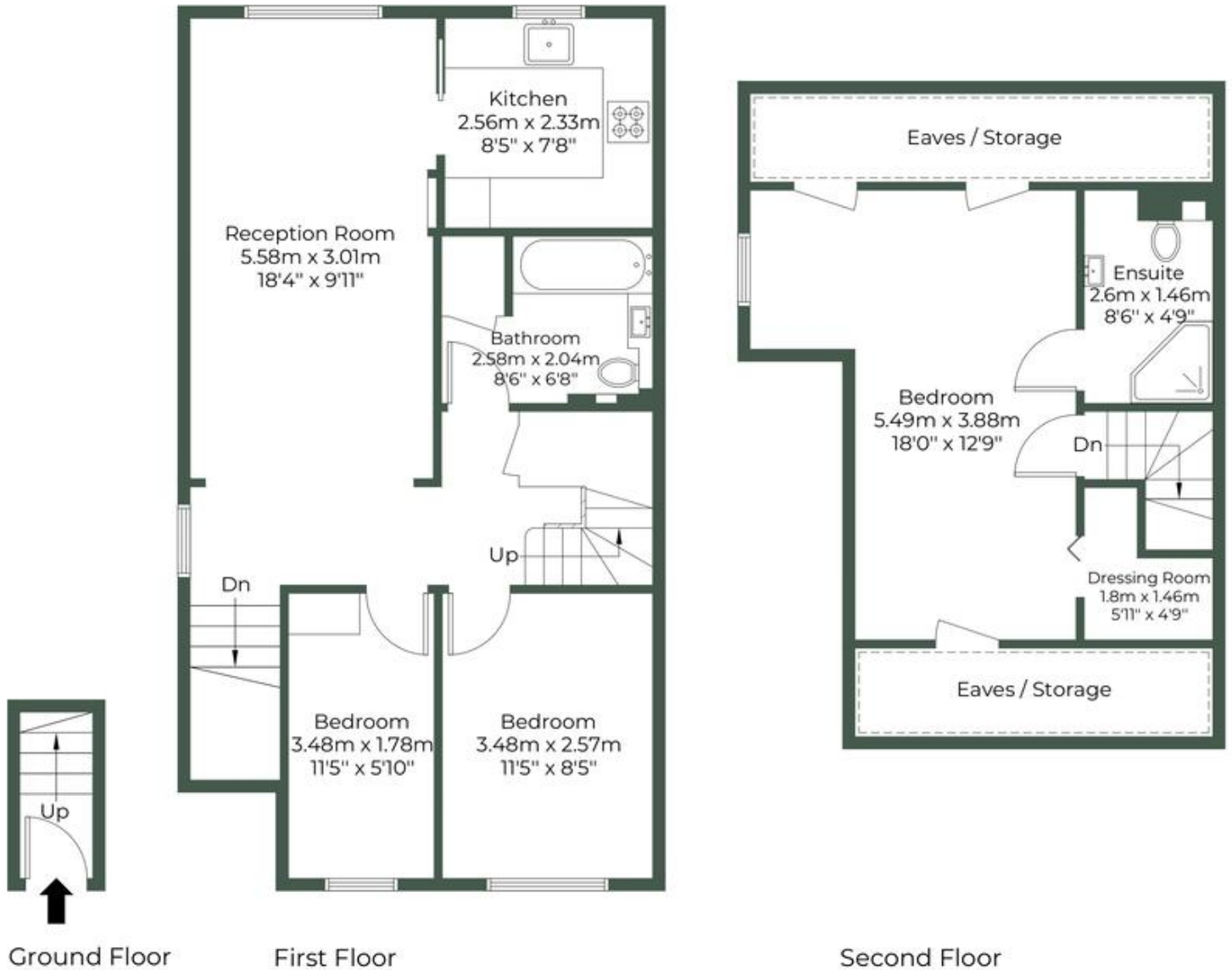
- **Very Spacious**
- **Great attention to detail**
- **Newly Renovated**
- **Underfloor heating**
- **Parking space**
- **Abundance of natural light**
- **Phone controlled app for utilities**
- **Close to the A406/North Circular**
- **Large main bedroom with en suite**
- **Unfurnished**

KINGFISHER WAY, NW10 8TN

Approximate Gross Internal Area = 86.2 sq.m / 928 sq.ft

Restricted head height = 10.8 sq.m / 116 sq.ft

Total = 97 sq.m / 1044 sq.ft



MONEY LAUNDERING REGULATIONS 2003: Intending purchasers will be asked to produce identification documentation at a later stage and we would ask for your co-operation in order that there will be no delay in agreeing the sale.

General: While we endeavour to make our sales particulars fair, accurate and reliable, they are only a general guide to the property and, accordingly, if there is any point which is of particular importance to you, please contact the office and we will be pleased to check the position for you, especially if you are contemplating travelling some distance to view the property.

Measurements: These approximate room sizes are only intended as general guidance. You must verify the dimensions carefully before ordering carpets or any built-in furniture.

Services: Please note we have not tested the services or any of the equipment or appliances in this property, accordingly we strongly advise prospective buyers to commission their own survey or service reports before finalising their offer to purchase.