



Brondesbury Park, London NW2

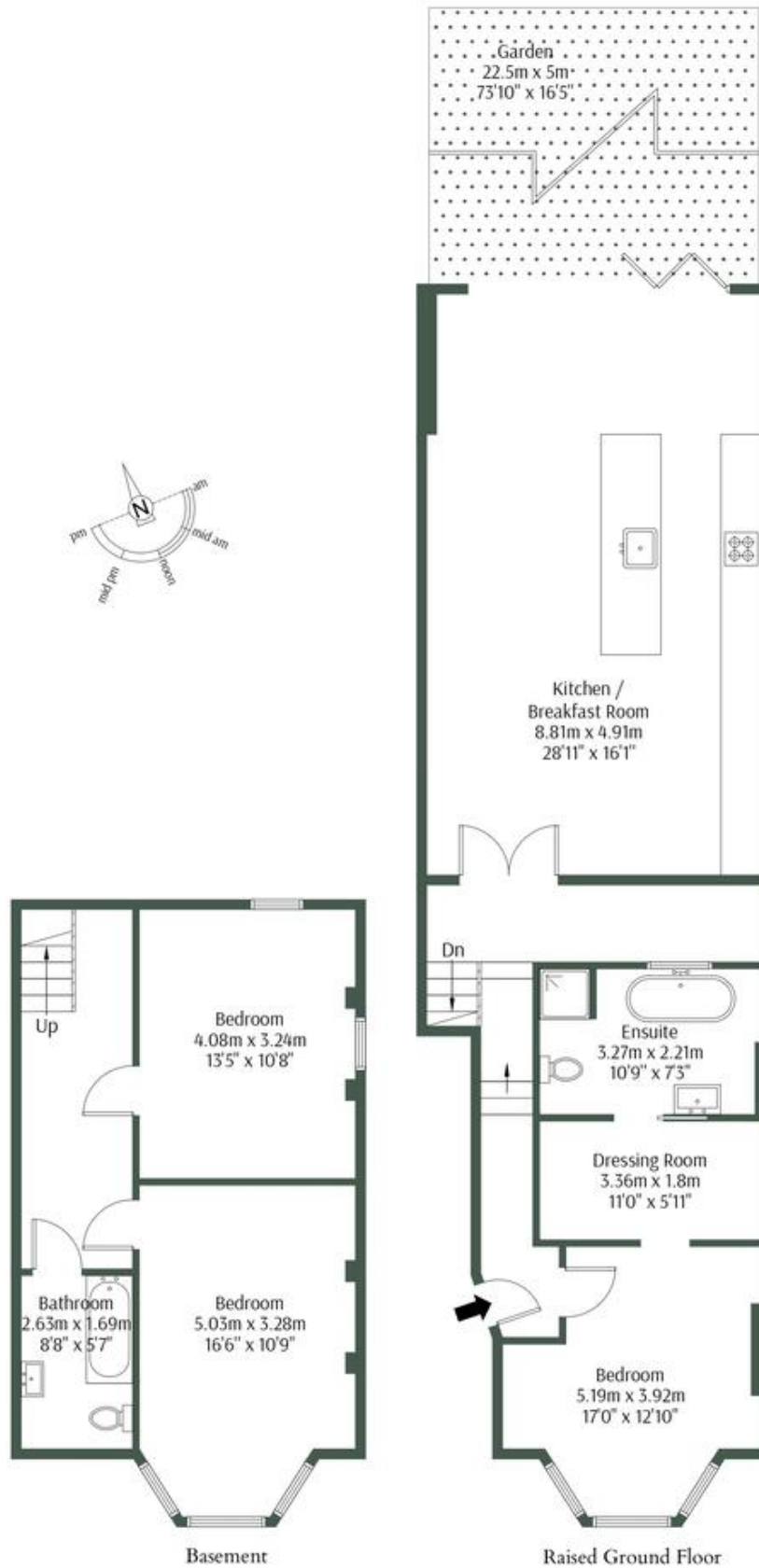
£800,000 Leasehold

Welcome to Brondesbury Park! This stunning three-bedroom garden apartment offers the perfect blend of modern luxury and comfortable living. Spread over 1381 square feet, this newly refurbished property boasts a sleek and contemporary design throughout. The open-plan kitchen and living area create a spacious and inviting atmosphere, perfect for entertaining guests or enjoying family time. The kitchen is equipped with top-of-the-line appliances and elegant finishes, making it a culinary enthusiast's dream. The apartment features two beautifully appointed bathrooms, one of which is an en suite for added privacy and convenience. Each bedroom is generously sized, providing ample space for relaxation and rest. Step outside into your private garden, a rare and highly sought-after feature that offers a peaceful retreat from the hustle and bustle of city life. Ideal for summer barbecues, gardening, or simply unwinding with a book, this outdoor space enhances the apartment's appeal. Located in the desirable Brondesbury Park area, this property is offered chain-free, making for a seamless and hassle-free buying process. Don't miss the opportunity to make this exquisite garden apartment your new home.

- Victorian conversion
- Three bedrooms
- Garden
- Chain free
- 125 year lease
- Newly refurbished
- Great location
- 1381 square foot
- Open plan kitchen living area
- Close to shops and transport

Brondesbury Park, NW2 5JN

Approx Gross Internal Area = 128.3 sq.m / 1381 sq.ft



M MILE

The Floor plan is not to scale and measurements and areas shown are approximate and therefore should be used for

MONEY LAUNDERING REGULATIONS 2003: Intending purchasers will be asked to produce identification documentation at a later stage and we would ask for your co-operation in order that there will be no delay in agreeing the sale.

General: While we endeavour to make our sales particulars fair, accurate and reliable, they are only a general guide to the property and, accordingly, if there is any point which is of particular importance to you, please contact the office and we will be pleased to check the position for you, especially if you are contemplating travelling some distance to view the property.

Measurements: These approximate room sizes are only intended as general guidance. You must verify the dimensions carefully before ordering carpets or any built-in furniture.

Services: Please note we have not tested the services or any of the equipment or appliances in this property, accordingly we strongly advise prospective buyers to commission their own survey or service reports before finalising their offer to purchase.