



# MILE



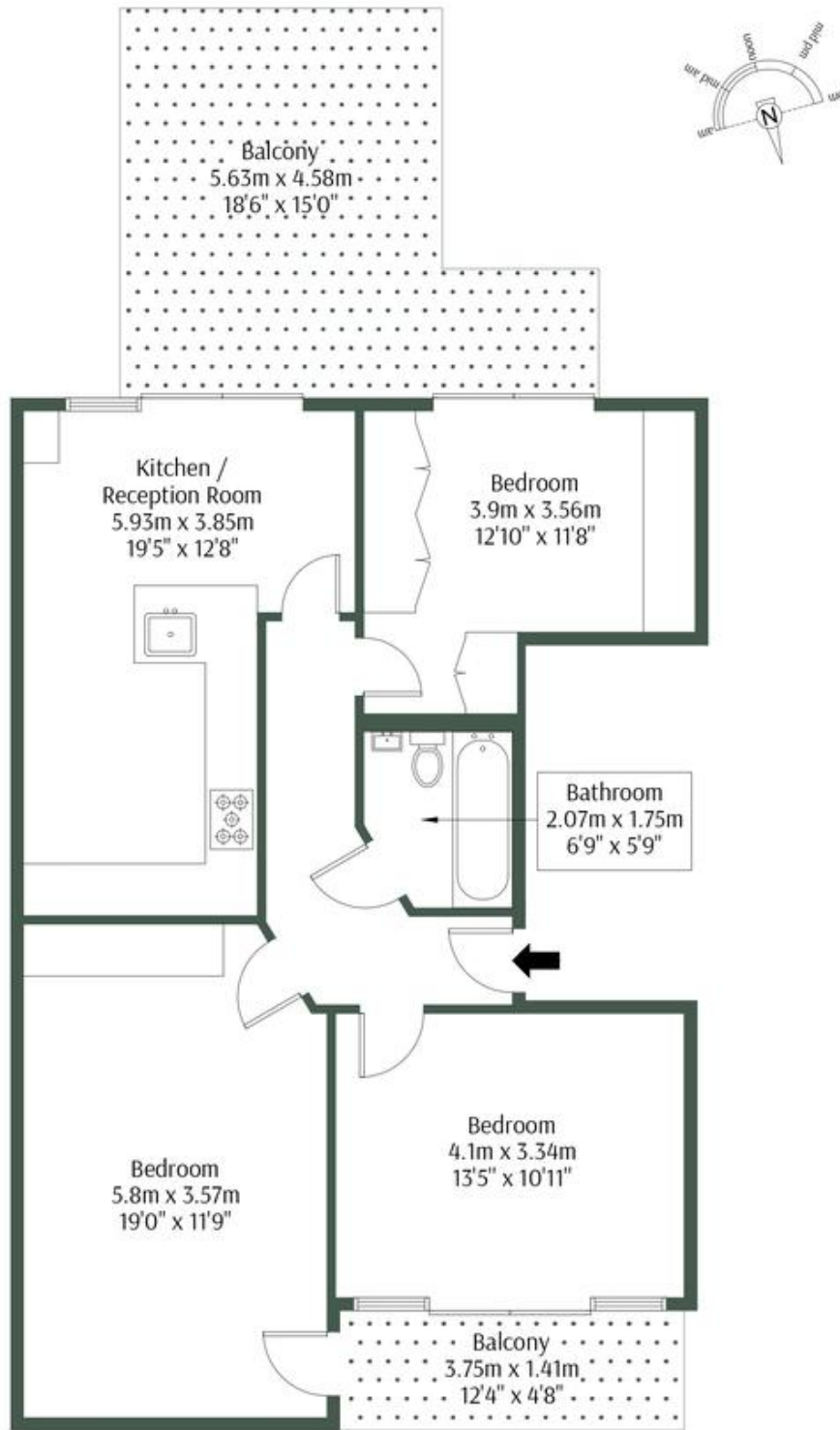
## Regent Street, London NW10 £625,000 Leasehold

Welcome to Regent Street, where contemporary urban living meets comfort and convenience. This first-floor apartment, nestled within a secure block, offers the perfect blend of modern amenities and a prime location. Step inside to discover a property in excellent condition, meticulously maintained to ensure your comfort from the moment you arrive. The layout features two bedrooms, providing ample space for relaxation and rest. The heart of the home lies in its separate living space, offering a cozy retreat for unwinding after a busy day. Adjacent, you'll find a stylish kitchen diner, thoughtfully designed to inspire culinary creativity. This culinary haven seamlessly transitions to a private roof terrace, where al fresco dining and entertaining await, creating an inviting ambiance for gatherings with friends and family. Convenience is key, with the added benefit of being chain-free, offering you the freedom to make this space your own without delay. Discover the epitome of urban living in this well-appointed two-bedroom apartment, where comfort, style, and location converge seamlessly. Welcome home to Regent Street.

- First floor apartment
- Two bedroom
- Roof terrace
- Chain free
- Great location
- 832 sq ft
- Secure block
- Quiet residential road
- Excellent Condition
- Close to shops and transports

# Regent Street, NW10 5LG

Approx Gross Internal Area = 77.3 sq.m / 832 sq.ft



First Floor



The Floor plan is not to scale and measurements and areas shown are approximate and therefore should be used for

**MONEY LAUNDERING REGULATIONS 2003:** Intending purchasers will be asked to produce identification documentation at a later stage and we would ask for your co-operation in order that there will be no delay in agreeing the sale.

**General:** While we endeavour to make our sales particulars fair, accurate and reliable, they are only a general guide to the property and, accordingly, if there is any point which is of particular importance to you, please contact the office and we will be pleased to check the position for you, especially if you are contemplating travelling some distance to view the property.

**Measurements:** These approximate room sizes are only intended as general guidance. You must verify the dimensions carefully before ordering carpets or any built-in furniture.

**Services:** Please note we have not tested the services or any of the equipment or appliances in this property, accordingly we strongly advise prospective buyers to commission their own survey or service reports before finalising their offer to purchase.