



MILE



Bathurst Gardens, London NW10

OIEO £600,000 Share of Freehold

Welcome to Bathurst Gardens, where contemporary living meets classic charm! This delightful property offers the epitome of comfortable living with its two-bedroom garden apartment nestled at the end of a serene terrace. Step inside to discover a spacious layout boasting great square footage, providing ample room for both relaxation and entertainment. The living spaces are bathed in natural light, creating a warm and inviting ambiance throughout. One of the highlights of this charming abode is its south-facing garden, a tranquil oasis perfect for enjoying alfresco dining, gardening, or simply unwinding amidst nature's beauty. For those with a vision for expansion, the property presents an exciting opportunity to extend, subject to obtaining the necessary planning permissions. Imagine customizing your dream home to perfectly suit your lifestyle needs and preferences. Whether you're seeking a peaceful retreat or a space to host gatherings with loved ones, this garden apartment offers the ideal blend of comfort, convenience, and potential for future growth. Welcome home to Bathurst Gardens, where your dream lifestyle awaits.

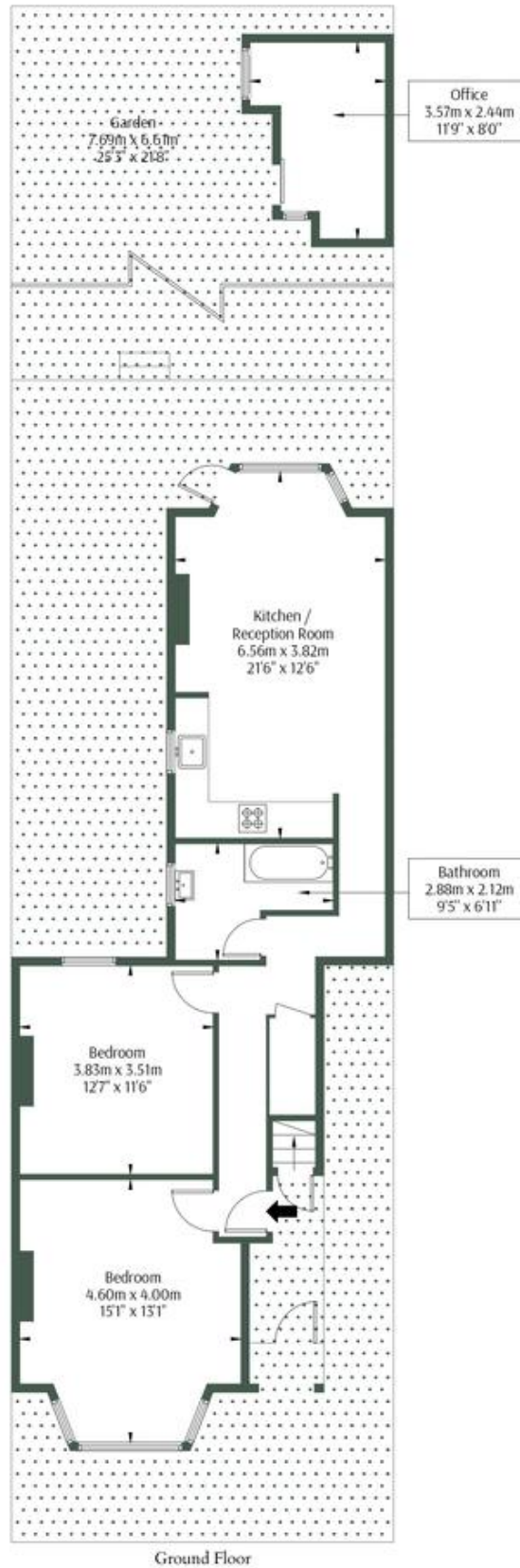
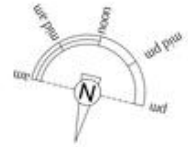
- Victorian conversion
- End of terrace
- 2 bed room
- South facing garden
- Chain free
- Potential to extend into the side and rear (STPP)
- 773 sq ft
- Home office
- Great location
- Close to shops and restaurants

Bathurst Gardens, NW10 5JJ

Approx Gross Internal Area = 71.8 sq.m / 773 sq.ft

Office = 7.1 sq.m / 76 sq.ft

Total = 78.9 sq.m / 849 sq.ft



The Floor plan is not to scale and measurements and areas shown are approximate and therefore should be used for

MONEY LAUNDERING REGULATIONS 2003: Intending purchasers will be asked to produce identification documentation at a later stage and we would ask for your co-operation in order that there will be no delay in agreeing the sale.

General: While we endeavour to make our sales particulars fair, accurate and reliable, they are only a general guide to the property and, accordingly, if there is any point which is of particular importance to you, please contact the office and we will be pleased to check the position for you, especially if you are contemplating travelling some distance to view the property.

Measurements: These approximate room sizes are only intended as general guidance. You must verify the dimensions carefully before ordering carpets or any built-in furniture.

Services: Please note we have not tested the services or any of the equipment or appliances in this property, accordingly we strongly advise prospective buyers to commission their own survey or service reports before finalising their offer to purchase.