

Town & Country

Estate & Letting Agents

Bronte Walk, Backford

£1,200,000



VIRTUAL TOUR AVAILABLE... This exquisite residence nestled within a serene modern development offers spaciousness, natural light, and tranquility. Featuring modern comforts like gas central heating and UPVC double glazing, it boasts an integrated internal Sound system and Villeroy & Boch sanitary ware. The open-plan kitchen, dining, and sitting area is the heart of the home, complemented by a garden room for relaxation. Generously proportioned bedrooms include ensembles and a Jack and Jill shower room. Externally, the westerly-facing rear garden provides a tranquil oasis, while a double garage adds convenience.

33 Lower Bridge Street, Chester, Cheshire, CH1 1RS
info@townandcountrychester.com

TEL: 01244 403900



DESCRIPTION

VIRTUAL TOUR AVAILABLE... Nestled within a serene modern development, this exquisite residence offers a harmonious blend of spaciousness and natural light. Positioned amidst lush woodlands at the rear and overlooking a tranquil communal green at the front, it promises a peaceful retreat while maintaining easy accessibility to key destinations such as local motorway networks, Chester city centre, and the renowned Cheshire Oaks shopping destination. Elegantly appointed with modern comforts, the property boasts gas central heating and UPVC double glazing, ensuring both warmth and energy efficiency. Step inside to discover a sanctuary of contemporary living, where every detail has been meticulously crafted to create an ambiance of refinement. Prepare to be captivated by its impressive features, including an integrated internal Sound system that extends seamlessly throughout every room, including the inviting rear garden. Revel in the luxury of Villeroy & Boch sanitary ware adorning each bathroom, adding a touch of sophistication to daily routines. The heart of the home lies within the expansive open-plan kitchen, dining, and sitting area, where culinary delights are prepared. A delightful garden room beckons, offering a tranquil space to unwind or entertain guests in style. For more formal occasions, retreat to the elegant lounge and dining room, thoughtfully located

on the ground floor to accommodate various lifestyles and preferences. Indulge in spacious comfort with five generously proportioned bedrooms, each offering a retreat of its own. Bedroom one and two pamper you with the luxury of ensembles, ensuring convenience and privacy. Meanwhile, bedrooms four and five share the convenience of a Jack and Jill shower room. Step outside to discover the enchanting westerly-facing rear garden, meticulously landscaped to create a tranquil oasis bathed in sunlight. Perfect for al fresco dining, relaxation, or simply basking in the beauty of nature, this outdoor sanctuary promises moments of serenity amidst the bustle of everyday life. Completing this idyllic picture is a double garage, thoughtfully equipped with power and light.



LOCATION

Situated in the picturesque landscapes just outside the historic city of Chester, lies the charming village of Backford. Offering a perfect blend of tranquility and convenience, Backford presents an idyllic setting for those seeking a harmonious balance between rural serenity and urban accessibility. Located mere moments away from Chester's bustling city center, residents of Backford enjoy the luxury of a peaceful retreat while still benefiting from easy access to an array of amenities. Whether it's shopping at the renowned boutiques, dining at exquisite restaurants, or exploring the rich

cultural heritage of Chester, everything you desire is within effortless reach. Backford itself exudes a timeless charm, with its quaint streets adorned with characterful homes and verdant greenery. The area is renowned for its sense of community, where neighbours become friends and local gatherings foster a warm and welcoming atmosphere. For those with a love for the outdoors, Backford boasts an abundance of scenic beauty waiting to be explored. From leisurely strolls along the winding country lanes to invigorating hikes through lush woodland, there's no shortage of opportunities to connect with nature right on your doorstep.

In addition to its natural splendor, Backford is also esteemed for its excellent schools, making it an ideal location for families seeking quality education for their children.



DIRECTIONS

From the Chester branch: Head south on Lower Bridge Street, turn right onto Castle Street, at the roundabout, take the 2nd exit onto Nicholas Street/A5268, continue to follow A5268, continue straight onto St Martin's Way/A5268, at the roundabout, take the 1st exit onto Upper Northgate Street/A5116, turn right onto A5116, turn left onto Liverpool Road/A5116, at the roundabout, take the 1st exit and stay on Liverpool Road/A5116, slight left onto Liverpool Road/A41, turn right onto Church Lane, slight left onto Gordon Lane, turn left

onto Ashbery Road, turn left onto Bronte Walk. Arrive: 8 Bronte Walk, Backford, Chester, UK



ENTRANCE HALL

11'4" x 10'10"

The property is entered through an oak front door flanked by opaque glazed side panels, opening to sleek Karndean flooring and a radiator. The staircase, adorned with a sophisticated stainless steel banister, oak newel posts, and glass balustrades, guides you to the first floor, with a convenient store cupboard nestled beneath. The internal doors off open to the cloakroom WC, the living room, the dining room and to the open plan kitchen and living space.



CLOAKROOM WC

Featuring a flush low-level WC and a pedestal wash hand basin adorned with a sleek mixer tap, this space offers both functionality and style. A stylish radiator ensures warmth and comfort, while partially tiled walls and Karndean flooring add a touch of luxury. Recessed

downlights and an extractor fan are discreetly set within the ceiling.



LIVING ROOM

29'10" x 13'1"

The living room showcases a bay window to the front and bi-folding doors that lead to the rear garden. It includes two radiators and highlights a marble Adams-style fireplace with two opaque windows on either side with spotlights.



DINING ROOM

13'1" x 13'9"

The dining room also features a bay window facing the front elevation, overlooking the beautiful greenery, with a radiator below.



OPEN PLAN KITCHEN/DINING/SITTING ROOM

35'8" x 23'1" max

A beautiful L-shaped space adorned with luxurious Karndean flooring throughout, three radiators provide warmth, while a captivating bow window graces the front elevation. Bi-folding doors unveil a picturesque view of the rear, along with an open throughway to the garden room. The well-appointed kitchen is complete with contemporary shaker-style wall, base, and drawer units, accented by sleek stainless steel handles. Quartz work surfaces provide ample space, complemented by a suite of integrated appliances. From the stainless steel oven and combination microwave to the induction hob with a stylish stainless steel and glass canopy extractor, every detail has been meticulously selected to elevate your cooking experience. Additional amenities include a dishwasher, stainless steel wine cooler, tower fridge, and tower freezer. A window faces the rear elevation and recessed downlights are set within the ceiling, with a door off leading to the utility room. An inset iPad is placed within the kitchen wall grants seamless control over the property's music system, external cameras, lighting, and more.



UTILITY

6'5" x 6'0"

The utility room boasts Karndean flooring with matching wall and base units, adorned with sleek stainless steel handles, creating a seamless transition from the kitchen. The Quartz worksurface houses a stainless steel single bowl sink unit with an adjustable mixer tap. There is housing and plumbing for a washing machine and an extractor fan is set within the ceiling.

FIRST FLOOR LANDING

The first floor landing boasts a seamless continuation of the staircase, complete with a banister and balustrades flowing from the entrance hall. Recessed downlights adorn the ceiling, a window overlooking the front elevation and a radiator. Ascending to the second floor, the staircase continues with the banister and balustrades.



GARDEN ROOM

13'8" x 9'8"

The garden room features a vaulted ceiling, with an apex window overlooking the rear garden, a second window graces the side elevation with bi folding doors opening to the other side elevation and out to the rear gardens paved patio. Continuing the seamless flow of design, the garden room boasts Karndean flooring that extends effortlessly from the kitchen/dining area.



PRINCIPAL BEDROOM

21'3" x 13'1" max

The principal bedroom features a charming bay window, offering delightful views of the front elevation with a radiator below. A range of fitted floor to ceiling wardrobes with recessed downlights above and a door off opening to the ensuite wet room.



DRESSING ROOM

7'3" x 4'2"

The dressing room is installed with a range of floor to ceiling wardrobes, with recessed downlights set within the ceiling. A door off opens to the principal bedrooms ensuite wet room.



BEDROOM TWO

17'8" x 13'1"

The second bedroom features a window that offers a serene view of the front elevation with radiator below. Fitted floor to ceiling wardrobes with a matching dressing table and an open throughway leading to the dressing room. The principal bedroom also benefits from an inset wall mounted iPad, like the one in the kitchen.

highlighting the fully tiled walls and ceramic floor, while an opaque window to the side elevation.



BEDROOM THREE

12'2" x 9'8"

The third bedroom features a window overlooking the rear elevation with a radiator below. Along one wall are fitted floor to ceiling wardrobes.



ENSUITE WET ROOM

8'6" x 5'8"

The ensuite wet room is appointed with contemporary amenities, including a dual flush low-level WC, a wash hand basin, adorned with a mixer tap with a stylish vanity unit below, complemented by a mirrored medicine cabinet. A chrome heated towel rail, a thermostatic shower featuring both a fixed overhead and a hand-held option, accompanied by a protective glass screen. Recessed downlights illuminate the space, highlighting the fully tiled walls and ceramic floor, while an opaque window to the rear elevation ensures privacy without compromising natural light.



ENSUITE WET ROOM

8'3" x 4'6"

Similar to the principal bedroom's wetroom, this ensuite is appointed with contemporary amenities, including a dual flush low-level WC, a wash hand basin, adorned with a mixer tap with a stylish vanity unit below, complemented by a mirrored medicine cabinet. A chrome heated towel rail, a thermostatic shower featuring both a fixed overhead and a hand-held option, accompanied by a protective glass screen. Recessed downlights illuminate the space,



FAMILY BATHROOM

8'10" x 8'2"

A beautiful modern suite comprising essential bath adorned with mixer tap and a convenient handheld shower extension, an oversized shower enclosure with dual head thermostatic shower, featuring both a fixed overhead and a handheld. A dual flush low-level WC, wash hand basin with mixer tap, a vanity unit below and mirror medicine cabinet above. Chrome heated towel rail, recessed downlights and extractor fan set within the ceiling, fully tiled walls, ceramic flooring, and an opaque window facing the rear elevation.



SECOND FLOOR LANDING

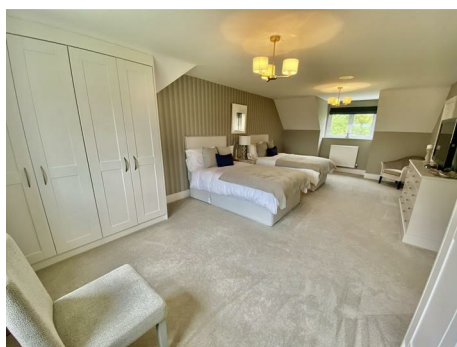
The second floor landing features a window facing the front elevation with a radiator below, downlights are set within the ceiling and a built-in cupboard which is shelved, houses the pressurised hot water cylinder.



JACK AND JILL SHOWER ROOM

11'3" x 7'1"

The spacious, Jack and Jill shower room is installed with a dual flush low-level WC, a wash hand basin, adorned with a mixer tap with a stylish vanity unit below, complemented by a mirrored medicine cabinet. A chrome heated towel rail, a thermostatic shower featuring both a fixed overhead and a hand-held option, accompanied by a protective glass screen. Recessed downlights, partially tiled walls with ceramic tiled flooring and an opaque window to the rear elevation.



BEDROOM FOUR

25'0" x 13'1"

The fourth bedroom offers a unique double aspect, capturing views of both the front and rear elevations, with radiators below. Enhancing both form and function, two sets of fitted floor-to-ceiling wardrobes adorn the walls, offering ample storage space and a door off opening to the Jack and Jill Shower room.



BEDROOM FIVE

19'3" x 13'1"

The fifth bedroom is currently utilised as a sitting room, having access to the Jack and Jill bathroom. Boasting dual aspect windows overlooking the rear and side elevations and two radiators.

DOUBLE GARAGE

16'5" x 16'1"

The garage is accessed from the front

through an automatic electric up and over garage door and through a separate UPVC double glazed side access door from the rear garden. Benefitting from power and light, along with recessed downlights set within the ceiling.



EXTERNALLY

The property is accessed via a brick block driveway, position to the front of the detached double garage. A paved pathway leads to the front door where there is an illuminated canopy above. With an outlook over the communal green. The front garden is golden gravelled with large stones and a scattering of colourful plants, trees and shrubs, with timber side access to the rear garden. A beautifully presented south westerly facing rear garden, with a large paved patio to either side of the garden room, a lawn garden with well stocked and attended beds and borders. The main feature being a stunning Yew tree, with box hedging borders. The rear garden is not directly overlooked from the rear, shielded by established trees and is enclosed by a combination of brick walling and timber fence panels. There is also external lighting and a water supply.



ARRANGE A VIEWING

Please contact a member of the team and we will arrange accordingly. All viewings are strictly by appointment with Town and Country Estate Agents Chester on 01244 403900.

SUBMIT AN OFFER

If you would like to submit an offer please contact the Chester branch and a member of the team will assist you further.



SERVICES TO PROPERTY

The agents have not tested the appliances listed in the particulars. Tenure: Leasehold (Freehold can be purchased)
Council Tax Band: G

MORTGAGE SERVICES

Town and Country Estate Agents Chester can refer you to a mortgage consultant who can offer you a full range of mortgage products and save you the time and inconvenience by trying to get the most competitive deal to meet your requirements. Our mortgage consultant deals with most major Banks and Building Societies and can look for the most competitive rates around to suit your needs. For more information contact the Chester office on 01244 403900. Mortgage consultant normally charges no fees, although depending on your circumstances a fee of up to 1.5% of the mortgage amount may be charged. **YOUR HOME MAY BE REPOSSESSED IF YOU DO NOT KEEP UP REPAYMENTS ON YOUR MORTGAGE.**





Energy Efficiency Rating		Current	Potential
Very energy efficient - lower running costs			
(92 plus) A			
(81-91) B		86	90
(69-80) C			
(55-68) D			
(39-54) E			
(21-38) F			
(1-20) G			
Not energy efficient - higher running costs			
England & Wales		EU Directive 2002/91/EC	

These particulars, whilst believed to be accurate are set out as a general outline only for guidance and do not constitute any part of an offer or contract. Intending purchasers should not rely on them as statements of representation of fact, but most satisfy themselves by inspection or otherwise as to their accuracy. No person in this firm's employment has the authority to make or give any representation or warranty in respect of the property.