

Town & Country

Estate & Letting Agents

Chester Road, Rossett

£399,950



This unique detached house is located in a sought-after village and boasts delightful rural views from the front and a well-established garden at the rear. Equipped with UPVC double glazing and oil central heating, it comprises a dining area with a snug, kitchen, laundry room/WC, living room, four bedrooms, family bathroom, and shower room. Ideal for those seeking a home that combines rural tranquillity with modern amenities.

33 Lower Bridge Street, Chester, Cheshire, CH1 1RS
info@townandcountrychester.com

TEL: 01244 403900

DESCRIPTION

This distinctive and well maintained property enjoys a tranquil location within a highly sought-after village and is characterized by its unique architectural style. It is a detached house that affords delightful rural views from its front elevation and boasts a generously-sized, well-established garden at the rear. Equipped with UPVC double glazing and oil central heating, the property comprises an entrance hall that leads to a dining area with a snug, with doors opening onto the kitchen and laundry room/WC and another door opening to the living room. The first floor landing provides access to all four bedrooms, the family bathroom, and the shower room. The property is ideally suited for those seeking a home that combines rural tranquillity with modern amenities.



LOCATION

Rossett is a small village located near to the Welsh and English border towns of Wrexham and Chester. Rossett is well served by schools, a local store, pharmacy, doctors' surgery and dentist, and there are a number of popular restaurants and inns in the surrounding area. There are excellent educational facilities in the area at primary and secondary level including first rate private education at Kings and Queens schools in Chester. The historic cities of Chester and Wrexham provide a wider range of retail, business and leisure facilities. Rossett also offers good access to the A483 trunk road which provides links to the motorway networks, the M53 to Liverpool and the M56 to Manchester and the M6, and North Wales via the A55 northern expressway.

DIRECTIONS

From the Chester branch: Head south on Lower Bridge Street

towards St Olave Street, turn right onto Castle Street, at the roundabout, take the 1st exit onto Grosvenor Road/A483, at the roundabout, take the 1st exit onto Wrexham Road./A483, At the roundabout, take the 2nd exit and stay on Wrexham Road./A483, at the roundabout, take the 2nd exit and stay on Wrexham Road./A483, at Post House Roundabout/Wrexham Road Interchange, take the 2nd exit onto A483, keep left to stay on A483, slight left onto Wrexham Road./B5445, continue to follow B5445. The destination will be on the left.



ENTRANCE HALL

8'10" x 4'5"

The properties entered through a green composite door with a diamond shape double glazed insert, which opens to engineered oak flooring, a radiator, a window to the rear elevation and an internal door that opens to the dining room.



DINING ROOM

17'0" x 11'2" max

The spacious dining area boasts engineered oak flooring, a window that provides ample natural light to the rear elevation, and a well-crafted fitted shelving unit. A tall column-style radiator provides warmth and comfort, while an open throughway leads to the snug area. The stairs to the first floor accommodation are conveniently located here, with a storage cupboard below. A door off the dining area opens to the kitchen, completing the layout of this beautifully designed space.



KITCHEN

10'10" x 7'9"

The kitchen is equipped with a range of light oak base units featuring ornate handles. Ample work surface space accommodates a stainless steel single drainer sink unit with

an adjustable mixer tap, an electric freestanding cooker and a column style radiator. Additionally, the kitchen offers space and plumbing for a dishwasher. A window on the side elevation provides natural light, while an internal door opens to the cloakroom/laundry room. A composite door offers access to the garden.

CLOAKROOM WC/LAUNDRY ROOM

7'8" x 4'3"

The cloakroom wc/laundry room is equipped with necessary plumbing for a washing machine, and includes a wash hand basin and a dual flush low level WC. Additionally, the area features opaque windows that face the side and rear elevations.



SNUG

9'6" x 7'8"

The snug is furnished with oak flooring and features a window that faces the side elevation, allowing for ample natural light. Additionally, the room is equipped with a door that opens to the living room, facilitating easy access and seamless integration with the rest of the space.



LIVING ROOM

19'8" x 12'2"

The living room boasts two windows that face the front elevation and are accompanied by radiators positioned below. The engineered oak flooring further enhances the space while a finely crafted media unit, comprising two base units, provides ample storage for a electric stove and log store. A solid oak countertop with shelving above completes the unit, adding to the room's aesthetic appeal.



FIRST FLOOR LANDING

With a window facing rear elevation, a radiator, access to the loft and a shelved airing cupboard.



BEDROOM ONE

13'4" x 8'9"

With a window facing the rear elevation and radiator below.



BEDROOM TWO

11'7" x 9'3"

A window to the front elevation, with a radiator below.



BEDROOM THREE

11'7" x 9'5"

Also with the window to the front elevation and radiator below.



SHOWER ROOM

7'8" x 2'6"

Installed with a separate shower enclosure with electric shower, fully tiled walls and a radiator.



BEDROOM FOUR

11'1" x 7'8"

Having a radiator and a window facing the side elevation.



BATHROOM

10'9" x 8'6"

The bathroom is equipped with a white suite that consists of a panel bath, low-level WC, and wash hand basin. The walls are partially tiled with an opaque window facing the side elevation. The bathroom is also fitted with a radiator for added comfort.



EXTERNALLY

The front of the property features a gravel area that serves as off-road parking for the vendors. The side of the property provides access for smaller vehicles, leading to further parking. A timber side access leads to the rear garden, which boasts a paved patio area complete with external lighting and water supply, a gravel pathway, and a general-sized mature garden laid to lawn. The garden is well-stocked with established beds and borders, and contains yet another seating area to the rear. Within the garden, a timber shed and oil tank are enclosed by a combination of hedging and fencing.





ARRANGE A VIEWING

Please contact a member of the team and we will arrange accordingly.

All viewings are strictly by appointment with Town and Country Estate Agents Chester on 01244 403900.

SUBMIT AN OFFER

If you would like to submit an offer please contact the Chester branch and a member of the team will assist you further.

SERVICES TO PROPERTY

The agents have not tested the appliances listed in the particulars.

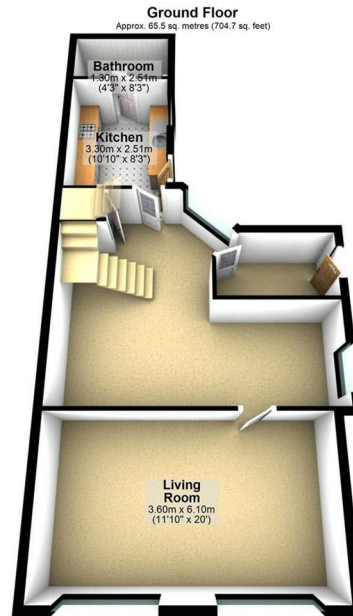
Tenure: Freehold

Council Tax Band: F £2909

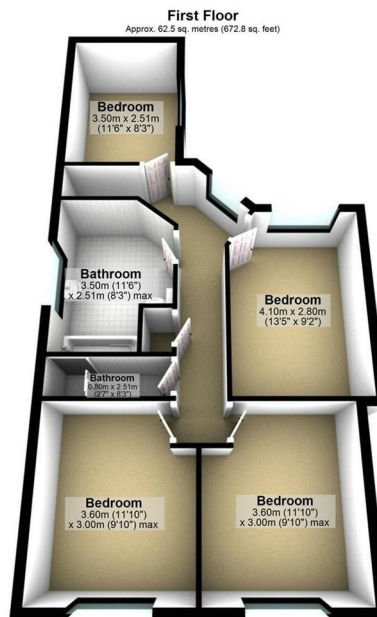
MORTGAGE SERVICES

Town and Country Estate Agents Chester can refer you to a mortgage consultant who can offer you a full range of mortgage products and save you the time and inconvenience by trying to get the most competitive deal to meet your requirements. Our mortgage consultant deals with most major Banks and Building Societies and can look for the most competitive rates around to suit your needs. For more information contact the Chester office on 01244 403900. Mortgage consultant normally charges no fees, although depending on your circumstances a fee of up to 1.5% of the mortgage amount may be charged.

YOUR HOME MAY BE REPOSSESSED IF YOU DO NOT KEEP UP REPAYMENTS ON YOUR MORTGAGE.



Total area: approx. 128.0 sq. metres (1377.5 sq. feet)



Energy Efficiency Rating		Current	Potential
Very energy efficient - lower running costs			
(92 plus) A			
(81-91) B			81
(69-80) C			
(55-68) D		59	
(39-54) E			
(21-38) F			
(1-20) G			
Not energy efficient - higher running costs			
England & Wales		EU Directive 2002/91/EC	

These particulars, whilst believed to be accurate are set out as a general outline only for guidance and do not constitute any part of an offer or contract. Intending purchasers should not rely on them as statements of representation of fact, but most satisfy themselves by inspection or otherwise as to their accuracy. No person in this firm's employment has the authority to make or give any representation or warranty in respect of the property.